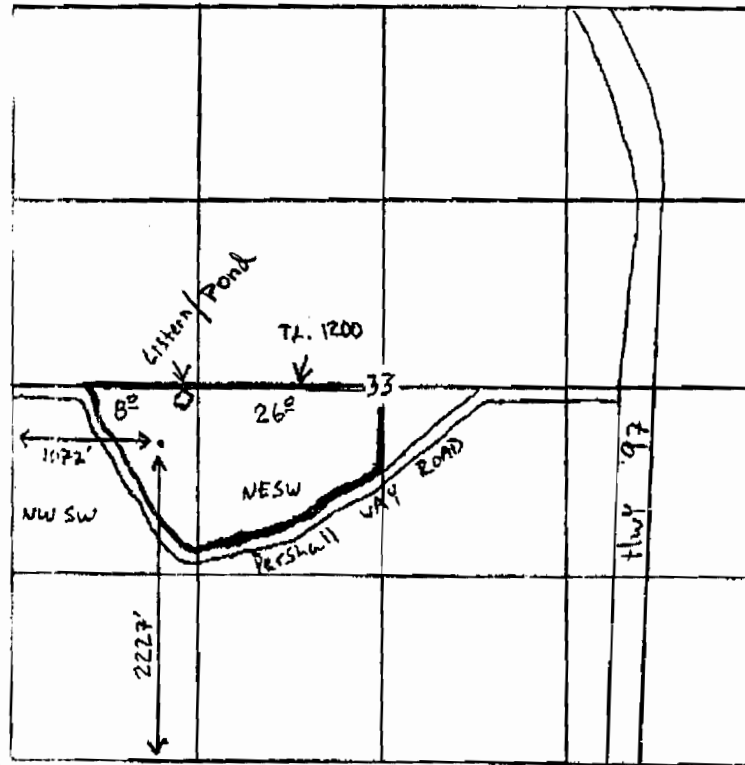


Groundwater Application For Jabra  
Robinson & Sons.

Township 14 South Range 13 East Section 33, W.M.

POU - B<sup>2</sup> NWSW 26<sup>2</sup> NESW Industrial  
All within tax lot 1200



Scale 1" = 1320'

B<sup>2</sup> (well #1) - 1072' East and 2227' North of  
the SW/4 of Section 33, Township 14 South  
Range 13 East, Section 33, W.M.

**RECEIVED**

MAR 16 2006

WATER RESOURCES DEPT  
SALEM, OREGON

**RECEIVED**

AUG 22 2005

WATER RESOURCES DEPT  
SALEM, OREGON

appno G-16642