

SCALE: 1"=400'

Well A
 Located from
 NW CORNER SECTION 35
 936 ft SOUTH
 & 1953 ft EAST

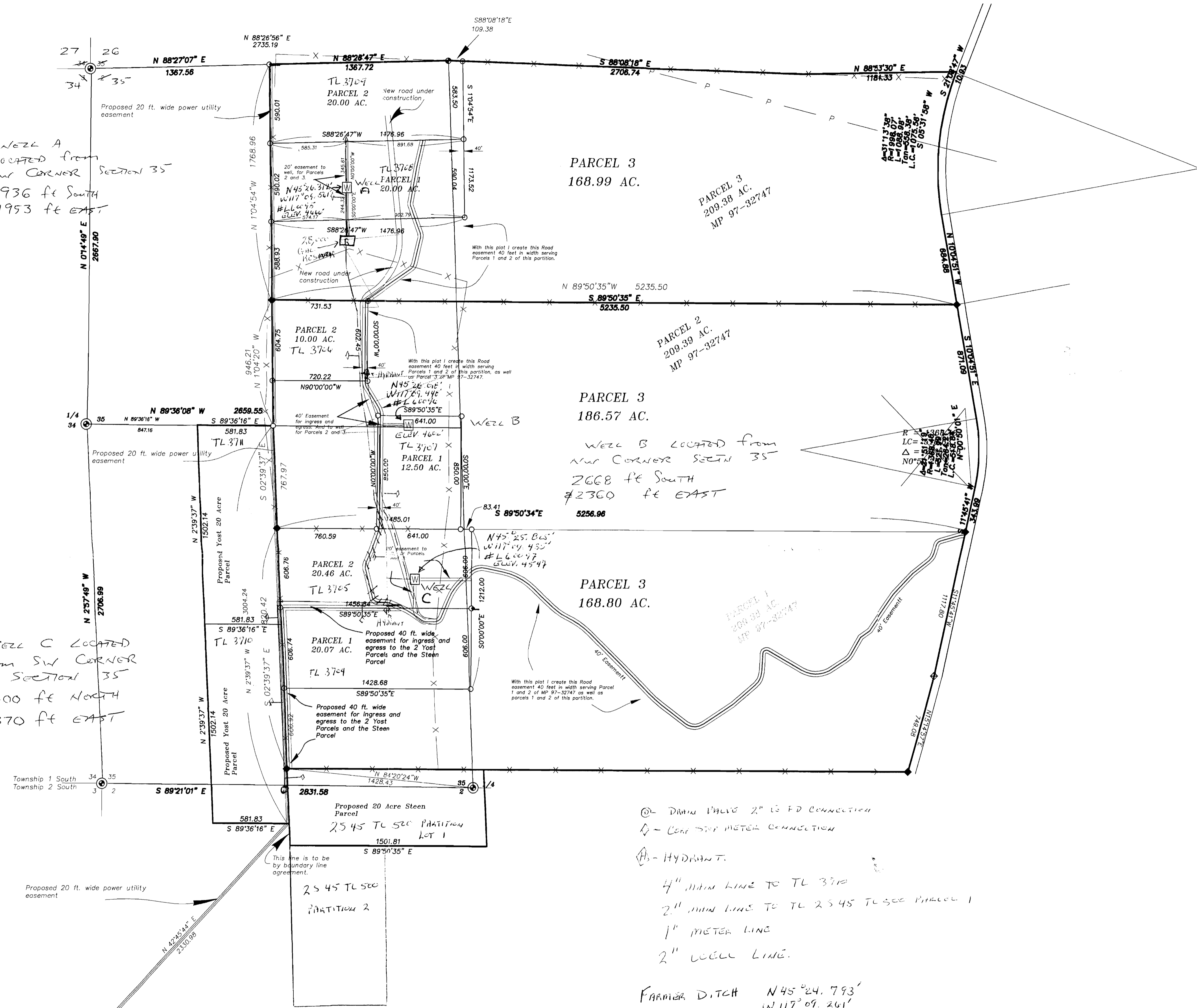
Well C Located
 from SW CORNER
 SECTION 35
 1400 ft NORTH
 2370 ft EAST

Well B Located from
 NW CORNER SECTION 35
 2668 ft SOUTH
 & 2300 ft EAST

① - DRAIN PIPING 2" IS FD CONNECTION
 Ⓚ - CONCRETE METER CONNECTION
 Ⓜ - HYDRANT
 4" MAIN LINE TO TL 3710
 2" MAIN LINE TO TL 2545 TO SEC PARCEL 1
 1" METER LINE
 2" WELL LINE

FARMER DITCH N 45° 24.793'
 W 117° 09.261'
 ELEV. 4085

PRAIRIE CREEK N 45° 24.920'
 W 117° 09.780'
 ELEV. 4041'



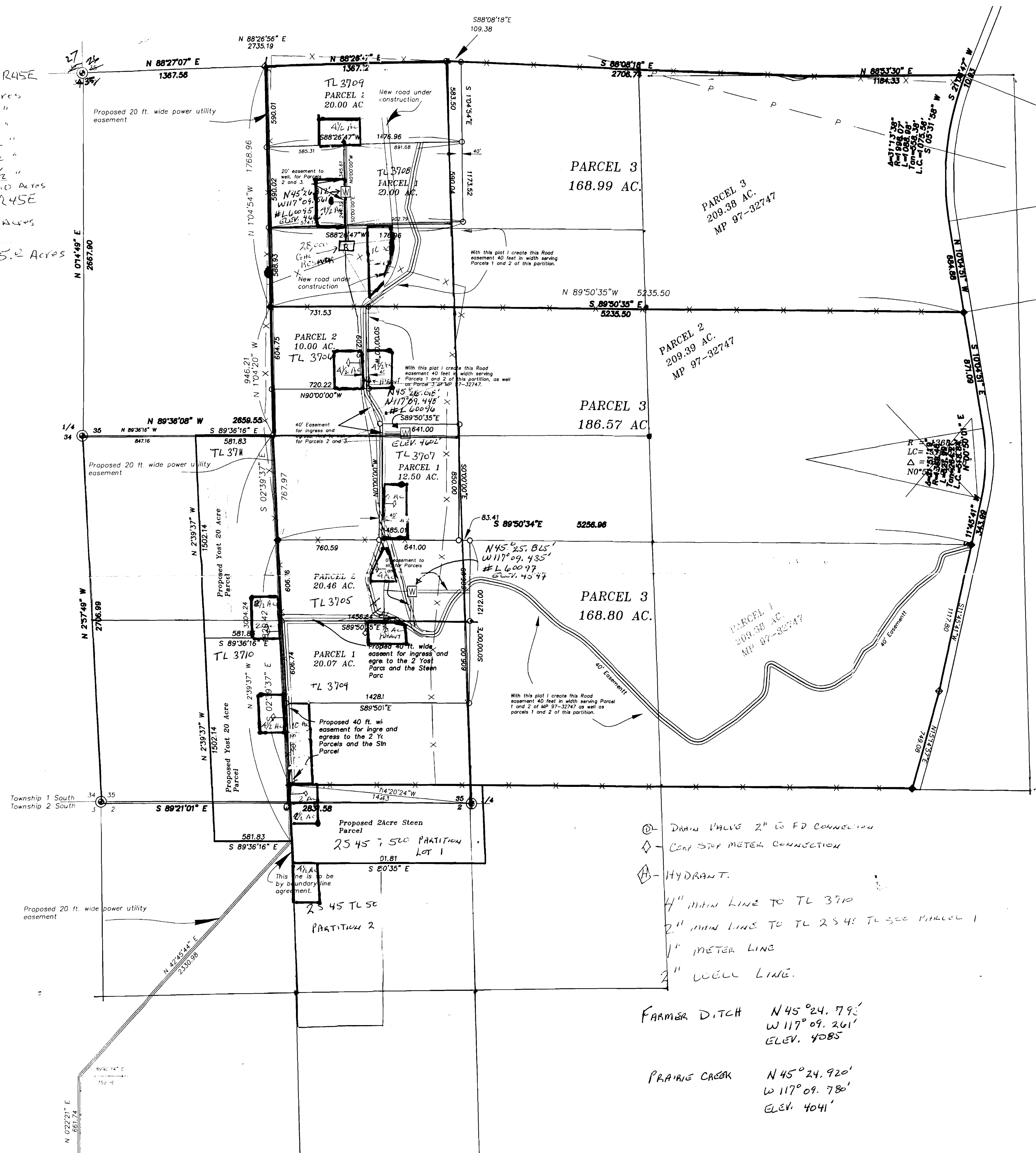
APPNO G-16744

REGISTERED
**PROFESSIONAL
 LAND SURVEYOR**
 GREGORY T. BLACKMAN
 891
 Renewal Date: Dec. 31, 2003

BAGETT, GRIFFITH & BLACKMAN 210 W. Main St., Enterprise, Oregon Map of Survey Proposed Minor Partition for Yost & Steen Situated in Sections 35 and 2 of Townships 1 & 2 South, Range 45 East of the Willamette Meridian Wallowa County, Oregon	
SURVEYED FOR	Jim Smejkal
SURVEYED BY	GTB
Scale: 1" = 400 ft.	Drawn by: GTB
	5/5/03

Section 35 T1S, R45E
 1/4 NW 1/4 - 9 acres
 1/4 N 1/2 - 19 "
 1/4 SW 1/4 - 14 1/2 "
 1/4 SW 1/4 - 16 1/2 "
 1/4 SW 1/4 - 2 1/2 "
 1/4 SW 1/4 - 6 1/2 "
 1/4 SW 1/4 - 68.0 Acres
 Section 2 T2S, R45E
 1/4 NW 1/4 - 9 acres
 GRAND TOTAL 75.2 Acres

SCALE: 1"=400'



(D) DRAIN VALVE 2" TO FD CONNECTION
 (A) CORR. STOP METER CONNECTION
 (H) HYDRANT.
 4" MAIN LINE TO TL 3710
 2" MAIN LINE TO TL 2545 TO SEE PARCEL 1
 1" METER LINE
 2" WELL LINE.

FARMER DITCH N 45° 24.793'
 W 117° 09.261'
 ELEV. 4085
 PRAIRIE CREEK N 45° 24.920'
 W 117° 09.780'
 ELEV. 4041'

REGISTERED
**PROFESSIONAL
 LAND SURVEYOR**
 JULY 13, 1973
GREGORY T. BLACKMAN
 991
 Renewal Date: Dec. 31, 2003

BAGETT, GRIFFITH & BLACKMAN
 210 W. Main St., Enterprise, Oregon
 Map of Survey
 Proposed Minor Partition for Yost &
 Steen Situated in Sections 35 and 2 of
 Townships 1 & 2 South, Range 45 East
 of the Willamette Meridian
 Wallawa County, Oregon
 SURVEYED FOR Jim Smejkal
 SURVEYED BY GTB

Comm 2-16744