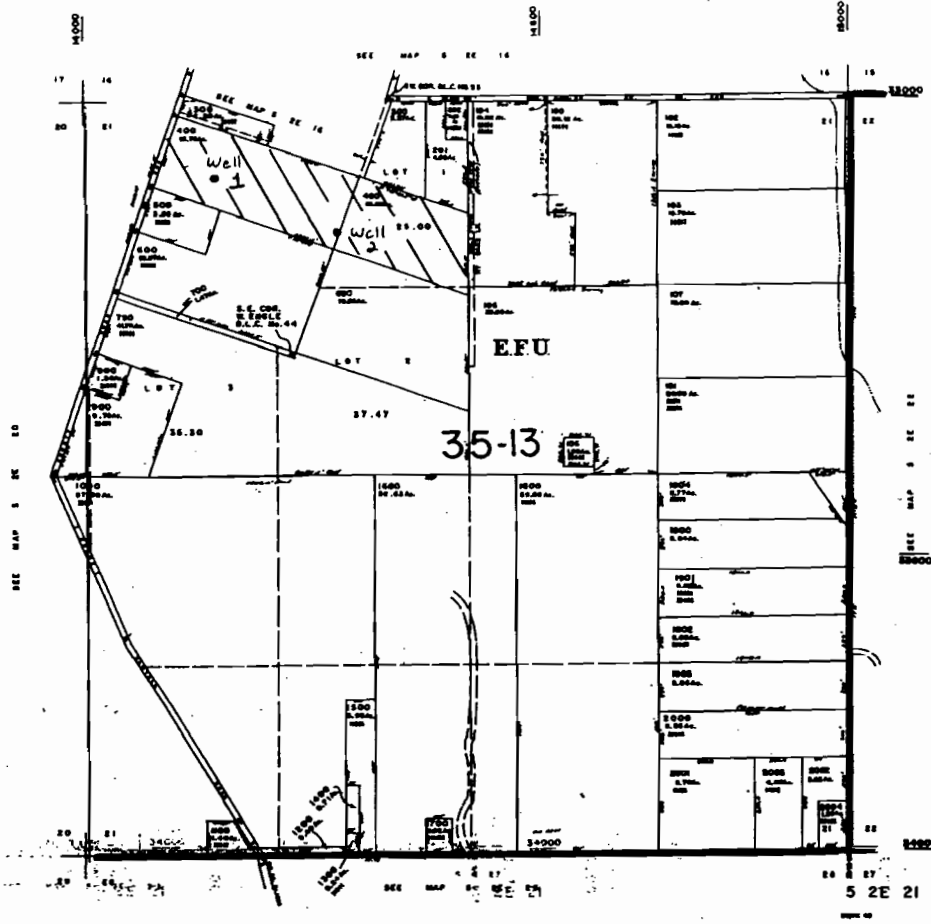


This map was prepared for
informational purposes only.

SECTION 21 T.5S. R.2E. W.M.
CLACKAMAS COUNTY

D.L.C.
W.M. ENGLE NO. 44

5 2E 21



Applicant: Christopher Xiong

POA Locations:

1) 528' South and 884' East 2) 924' South and 1716' East from the NW Corner T. 5 S., R., 2 E., Section 21

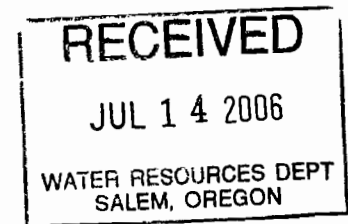
Irrigated Acres:

10.0 Acres NW 1/4, NW 1/4
16.06 Acres NE 1/4, NW 1/4
0.03 Acres SE 1/4, NW 1/4

T. 5 S. R. 2 E. Section 21,

Within Tax Lots 400 and 490

T. 5 S. R. 2 E. Section 21



Scale: 1" = 1320'

app no G-16696