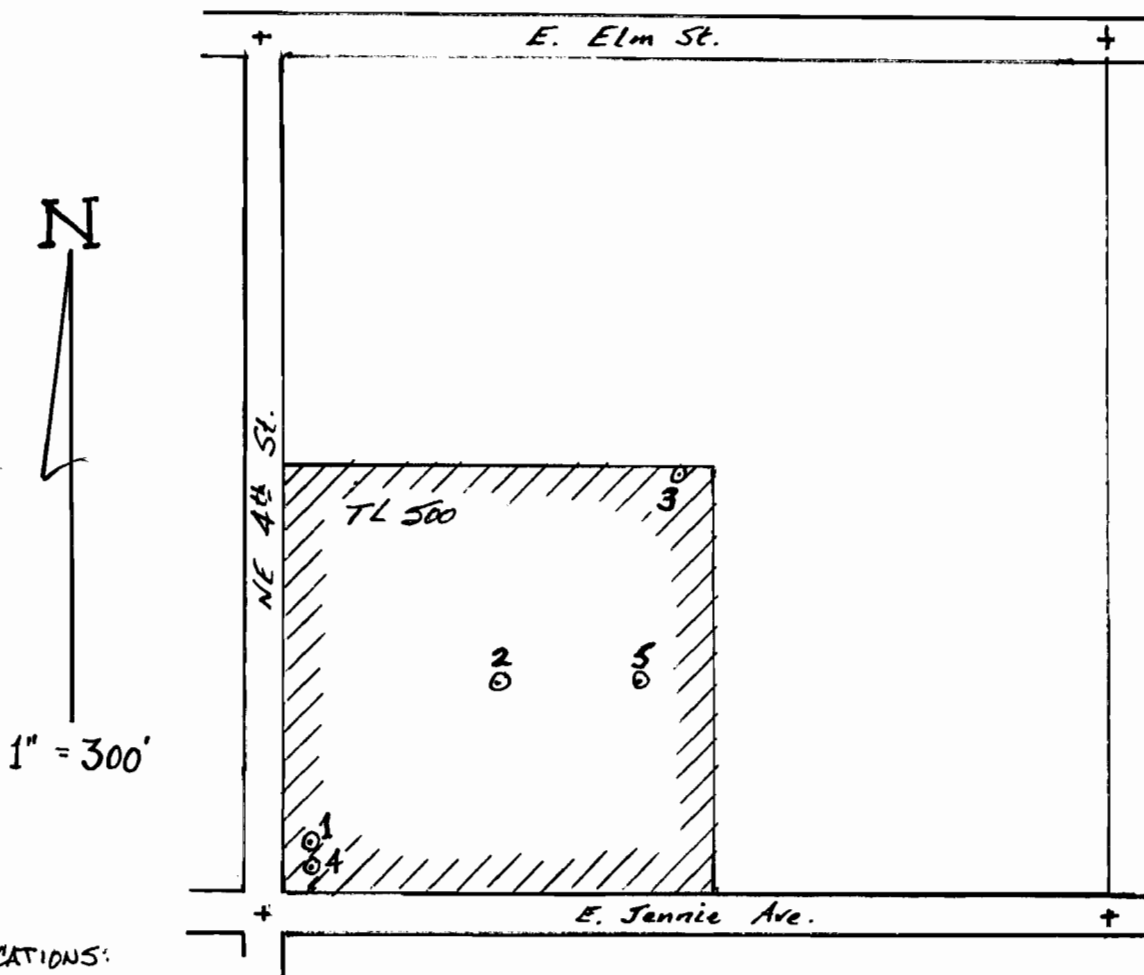


T. 4 N., R. 28 E., W.M.
NE 1/4 NW 1/4, Sec. 11



WELL LOCATIONS:

- 1 - 110' N. & 75' E.
- 2 - 360' N. & 370' E.
- 3 - 640' N. & 650' E.
- 4 - 70' N. & 70' E.
- 5 - 360' N. & 590' E.

- ALL FROM SW COR.
NE 1/4 NW 1/4, SEC. 11.

MAP TO ACCOMPANY APPLICATION
IN THE NAME OF
DUN-ROLLIN MOBILE HOME PARK, INC.

RECEIVED
NOV 13 2006
WATER RESOURCES DEPT
SALEM, OREGON

appn 06-16750

Nov, 2006 *ARR*