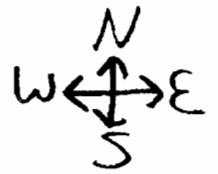
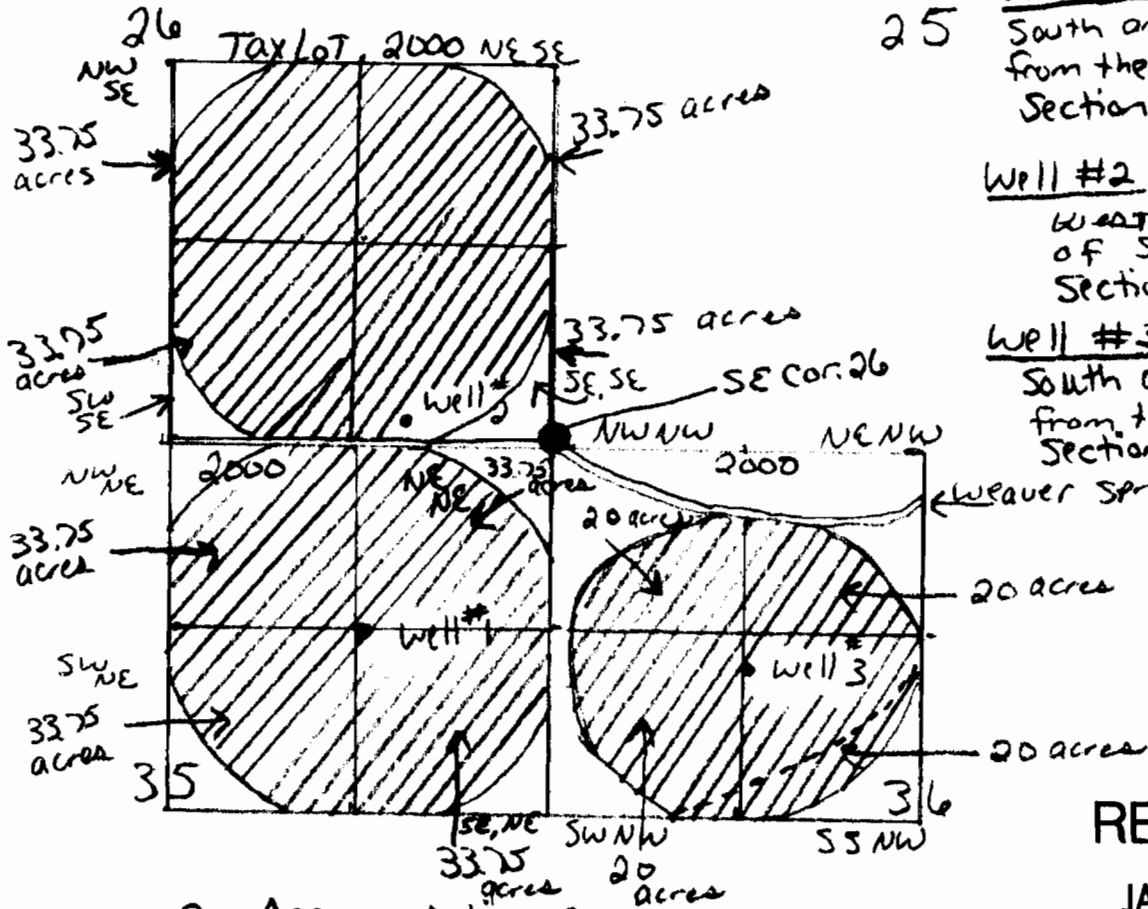


# Water right Application map

12. Malheur Lake Twp. 25S, R30E, Wm:



7



25 Well #1 located 1320 FT South and 1320 FT West from the SE corner of Section 26

Well #2 located 950 FT West and 90 FT North of SE corner of Section 26

Well #3 located 1450 FT South and 1320 FT East from the SE corner of Section 26

4

## Point of Appropriation:

Sec 35 Well #1 SE, NE

Sec 26 Well #2 SE, SE

Sec 36 Well #3 SW, NW

Scale 1" = 1320 FT.  
4" = 1 mile

- = Well Site
- = = roadway
- - - = Power lines
- /// = Proposed area to be irrigated
- = Corner Section

RECEIVED

JAN 05 2007

WATER RESOURCES DEPT.  
SALEM, OREGON

## Place of use:

Sec 35 NW, NE 33.75 acres  
NE, NE 33.75 acres  
SW, NE 33.75 acres  
SE, NE 33.75 acres

Sec 26 NW, SE 33.75 acres  
NE, SE 33.75 acres  
SW, SE 33.75 acres  
SE, SE 33.75 acres

Sec 36 NW, NW 20 acres  
NE, NW 20 acres  
SW, NW 20 acres  
SE, NW 20 acres