

File # appl. #  
 9-16866

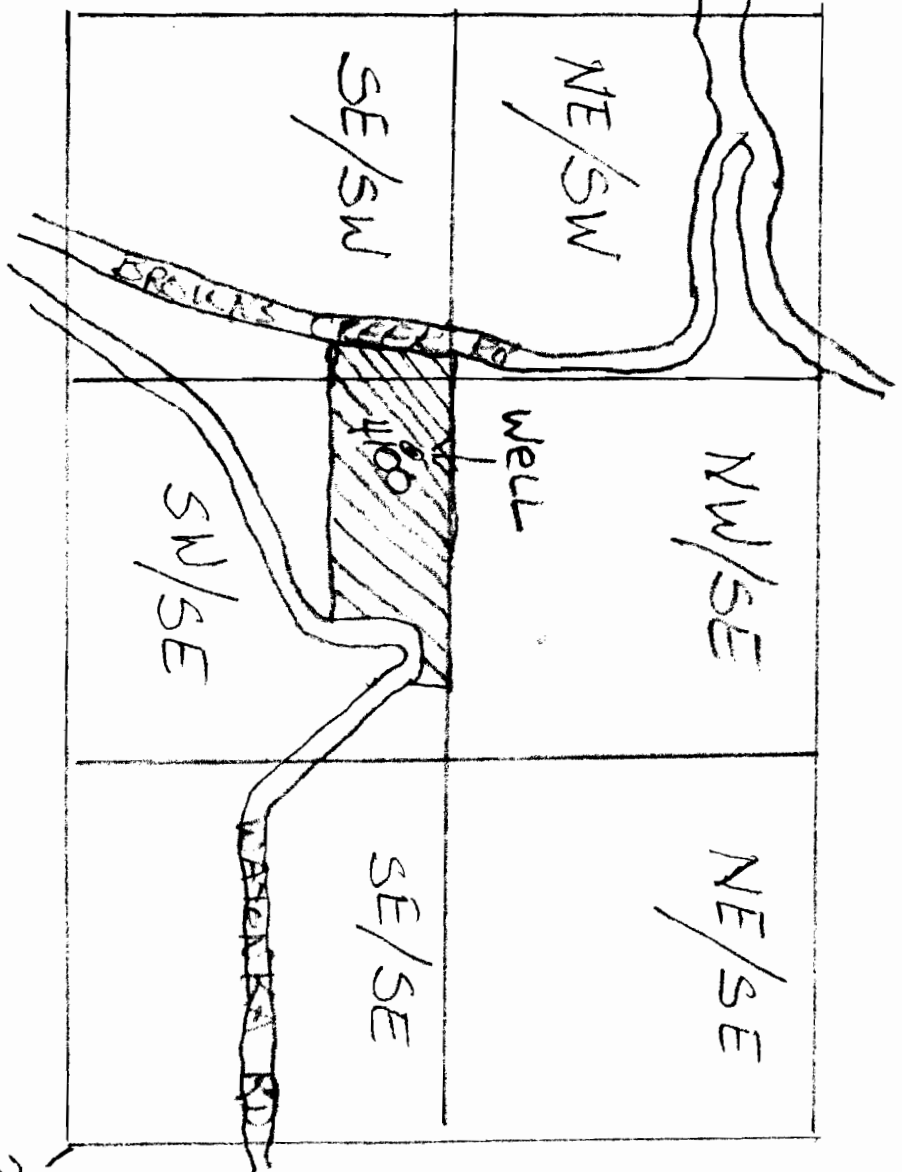
TAX Lot  
 4100  
 Shaded  
 AREA

WELL location  
 2435 ft West  
 of S.E. corner  
 of Section  
 36

1175 ft  
 North of  
 S.E. CORNER  
 of SECTION  
 36

Wasco Co.  
 Hood BASIN  
 # 4

2N 12 36



North  
 1" = 660 ft  
 8.5 acres  
 SW/SE  
 .9 acres  
 SE/SW

RECEIVED  
 NOV 01 2007  
 WATER RESOURCES DEPT  
 SALEM OREGON

SCALE = 1" = 660'  
 ON ENGINEER'S SCALE 10 units = 660 ft