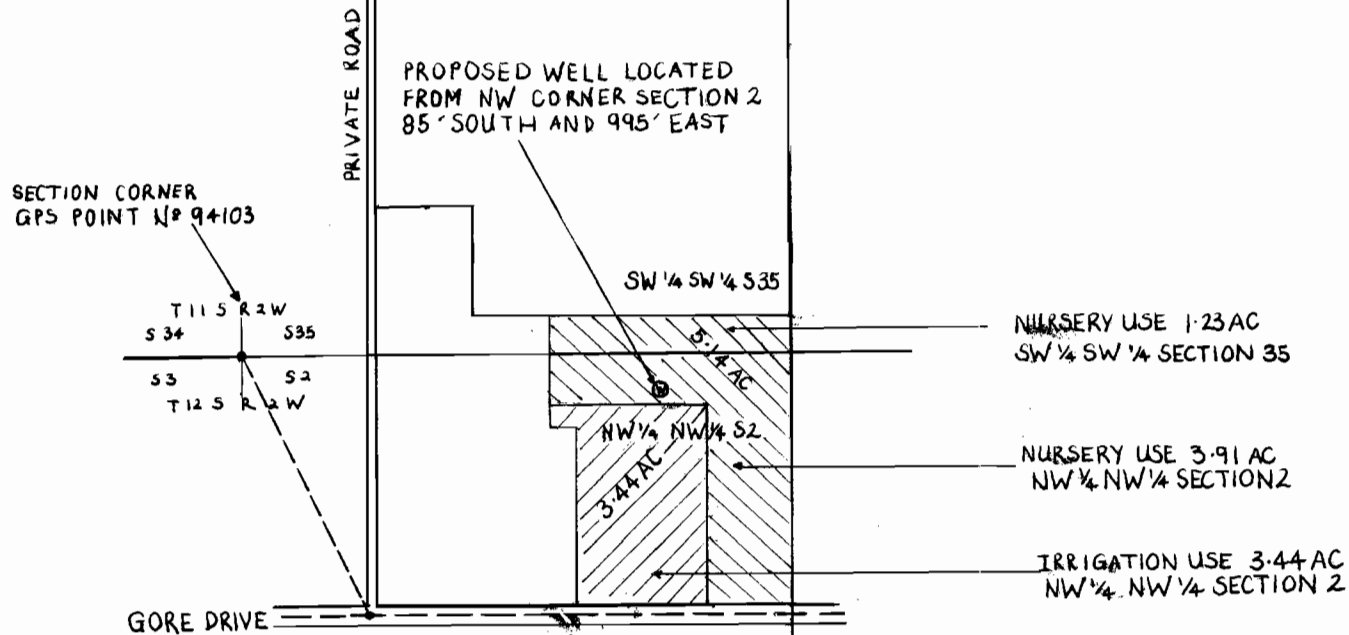




SCALE: 1"=300'

APPLICATION MAP  
FOR GROUND WATER RIGHTS FOR  
GREGORY L. KOSMALA  
TAX LOT 1200 T11S-R2W-S35



RECEIVED  
NOV 15 2006  
WATER RESOURCES DEPT  
SALEM, OREGON

app no G-16753