

RECEIVED

SEP 17 2007

WATER RESOURCES DEPT
SALEM, OREGON

GARLAND ACRES

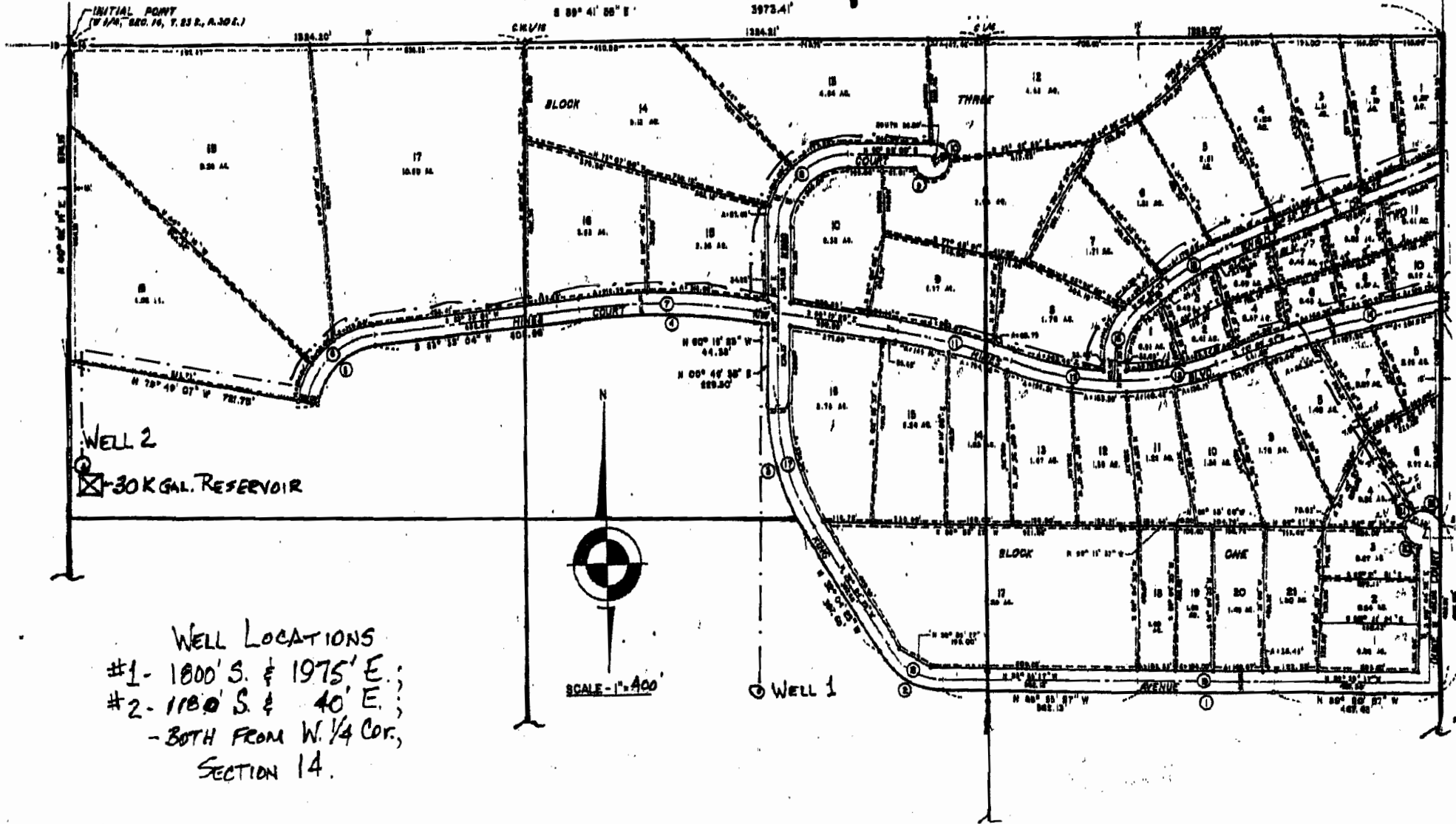
LOCATED IN THE SW 1/4, AND THE W 1/2 OF THE
SE 1/4 OF SEC. 14, T. 23 S., R. 30 E., WM. HARNEY CO., OREGON.

RECEIVED

FEB 20 2008

WATER RESOURCES DEPT
SALEM, OREGON

APPLICATION MAP FOR GH2O, Inc.



WELL LOCATIONS

- #1 - 1800' S. & 1975' E.;
- #2 - 1180' S. & 40' E.;
- BOTH FROM W. 1/4 COR.,
- SECTION 14.

08/2007 JRL