

CS 18081



RECEIVED

NOV 08 2007

WATER RESOURCES DEPT
SALEM, OREGON

App No G-16957

1100'

60'

407

7.45 AC.

312.22'

274' L

420

0.43 AC.

Road

N0°12'36"E
311.93' 21.0N

60'

7.00 AC

113' A

Road 28' E



Seasonal creek

312.22'

1040'

415

13.33 AC.

Scale: 1" = 120'

* = well 1, ID.# L-92549
4.32.43 122.52.88
LAT. Long.

{ = seasonal creek

▨ = proposed Irrigated acreage

22'

421

1.58 AC.

594.22'

4
2

220'

THIS MAP WAS PREPARED FOR ASSESSMENT PURPOSE ONLY

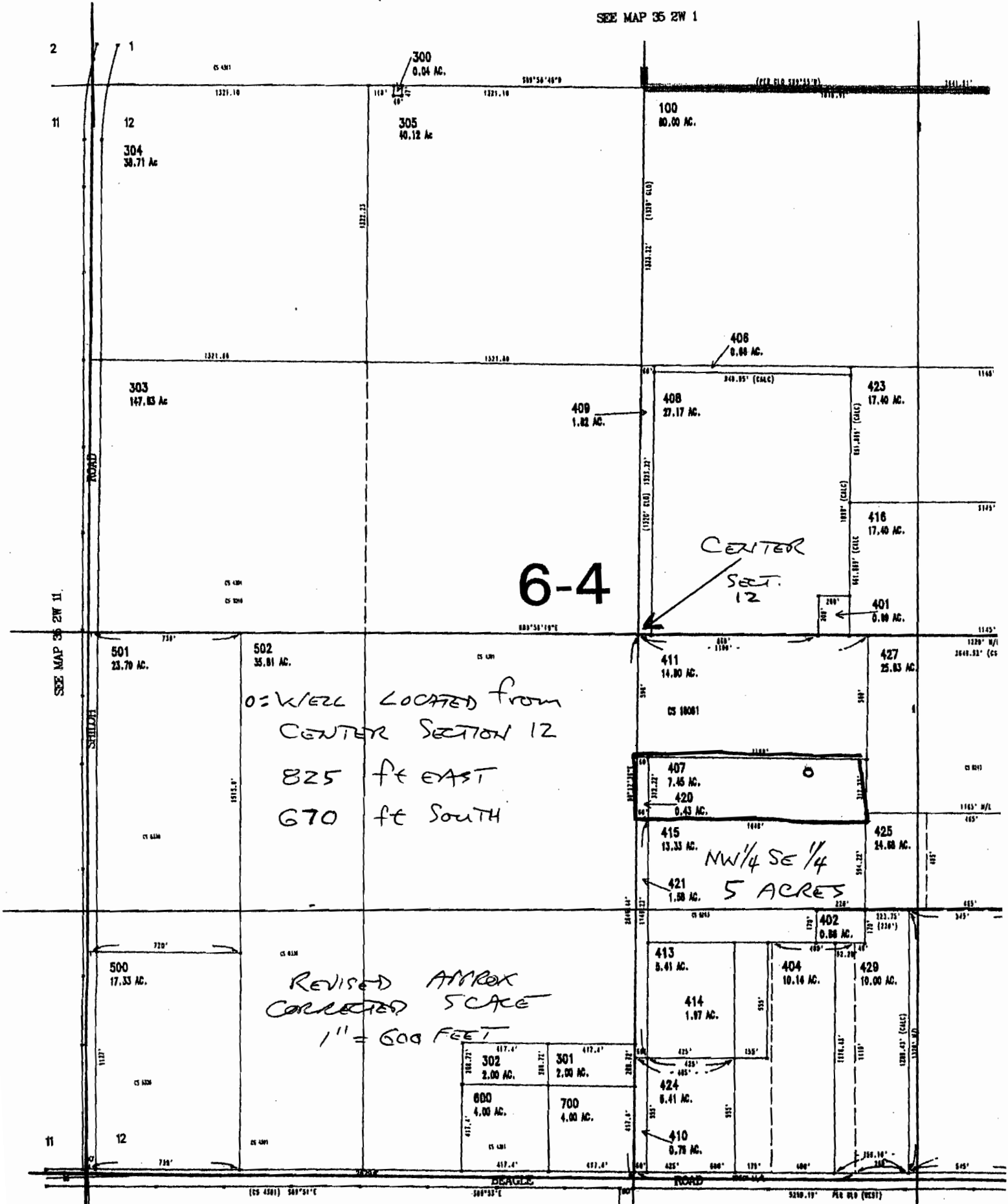


SECTION 12 T35S R2W. W.M.
JACKSON COUNTY

1" = 600'

SEE MAP 35 2W 1

RECEIVED



SEE MAP 35 2W 11

14

13

114057

SEE MAP 35 2W 13