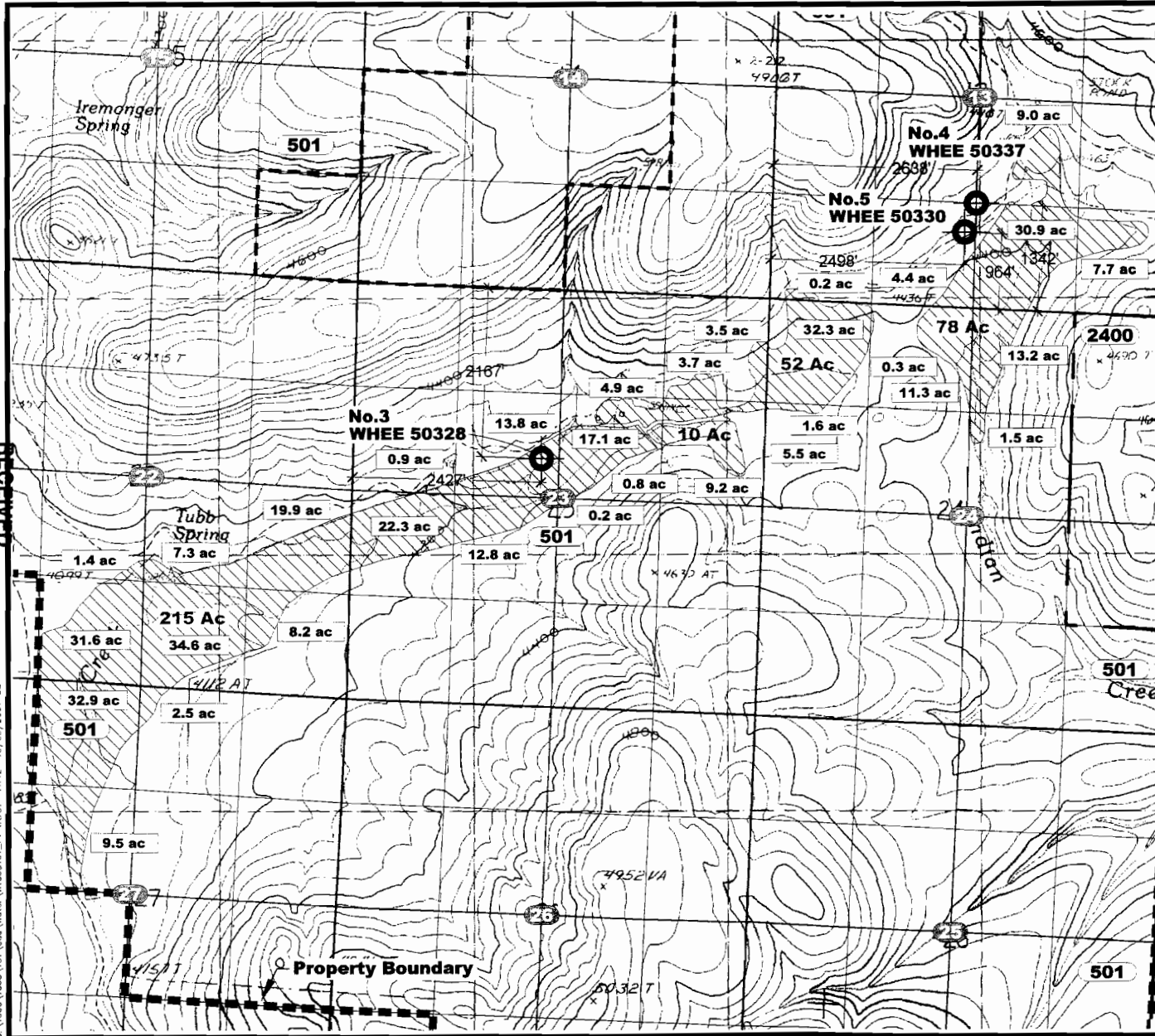


OCT 08 2007

10/05/2007 SS



**WATER APPLICATION MAP
TAX LOTS 301, 501 & 2400**

Located in Sections 10, 11, 12,
13, 14, 15, 16, 17, 21, 22, 23, 24, 25,
26, 27, 35, & 36
T11S, R24E W.M.
Wheeler County, Oregon

NOTES

1. This map was prepared for the purpose of identifying the location of water rights only and is not intended to provide legal dimensions or locations of property ownership lines.

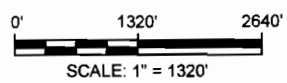
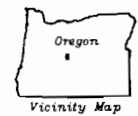
LEGEND

- No. 6 WHEE 50334**
Location of Well with the Well ID Number and Well Log ID Number
- Approximate Locations of Areas to be Irrigated and Approximate Number of Acres
- 3 Ac**
- Section Number
- 10**
- 501** Tax Lot Number
- 40.1 ac** Approximate Number of Acres in each Qtr-Qtr to be Irrigated



OCT 08 2007

WATER RESOURCES DEPT
SALEM, OREGON



Application Map - Permit to Use Ground Water
4-DSD, LLC
Waterman Flat, Wheeler County, Oregon

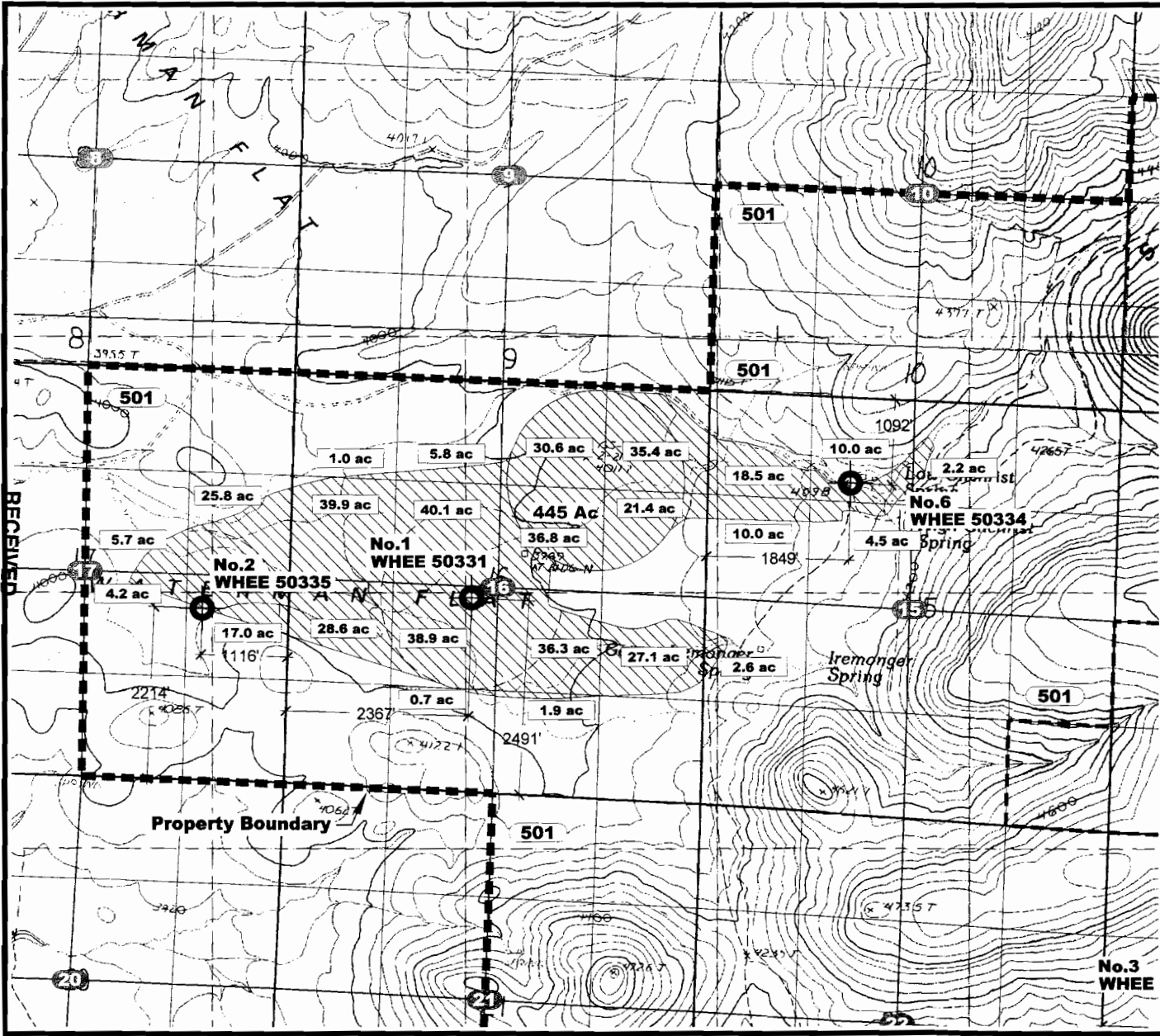


DESIGNED BY: M. Pette
DRAWN BY: S. Schenck

DATE: Sept 2007
PROJECT NO: 1063-101
SHEET 3 OF 3

OCT 08 2007

RECEIVED
OCT 08 2007



WATER APPLICATION MAP
TAX LOTS 301,500,501 & 2400

Located in Sections 10, 11, 12,
13, 14, 15, 16, 17, 21, 22, 23, 24, 25,
26, 27, 35, & 36
T11S, R24E W.M.
Wheeler County, Oregon

NOTES

1. This map was prepared for the purpose of identifying the location of water rights only and is not intended to provide legal dimensions or locations of property ownership lines.

LEGEND

- No.6 WHEE 50334**
Location of Well with the Well ID Number and Well Log ID Number
- Approximate Locations of Areas to be Irrigated and **3 Ac** Approximate Number of Acres
- 24** Section Number
- 501** Tax Lot Number
- 40.1 ac** Approximate Number of Acres in each Qtr-Qtr to be Irrigated

RECEIVED
OCT 08 2007
WATER RESOURCES DEPT
SALEM, OREGON

Vicinity Map

SCALE: 1" = 1320'

Application Map - Permit to Use Ground Water
4-DSD, LLC
Waterman Flat, Wheeler County, Oregon

NEWTON CONSULTANTS INC.
Earth, Water and Rock Specialists
Ph: 541.504.9560
Fax: 541.504.9561

DESIGNED BY: M.Petle	DRAWN BY: S.Schenck	DATE: Sept 2007	PROJECT NO: 1063-101	SHEET: 2 OF 3
----------------------	---------------------	-----------------	----------------------	---------------