

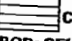


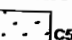



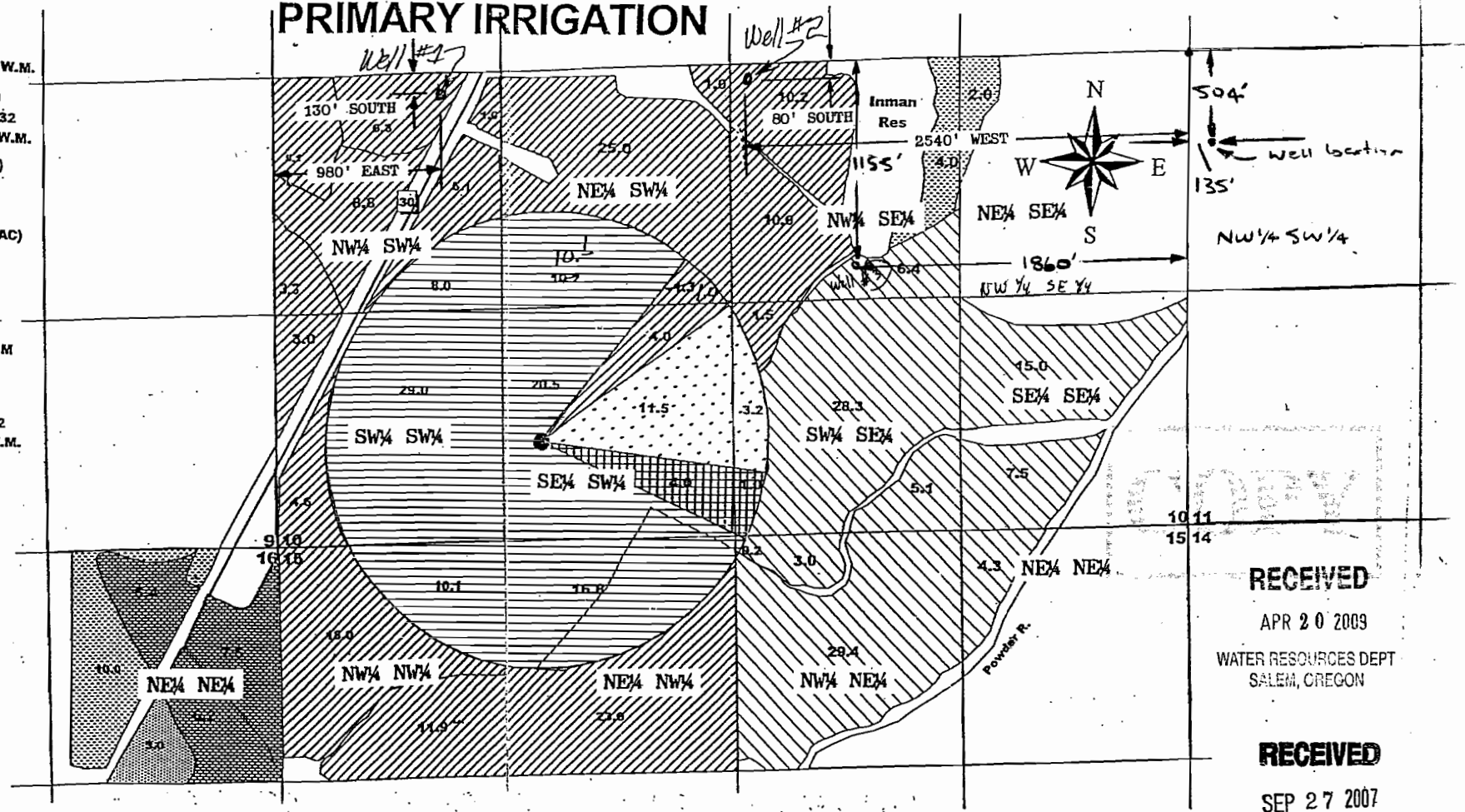
LEGEND

-  C1498 NPR; Date: 1901 (143.1 AC)
POD: Kelsey Wilson; SE 1/4 SW 1/4, S 36
950'N & 2450'E FM SW COR S 36, 6S, 38E, W.M.
-  C1463 NPR; Date: 1898 (5.0AC)
POD: Smith McPhee Tanner; NW 1/4 SW 1/4, S 32
1500'N & 500'E FM SW COR S 32, 6S, 39E, W.M.
-  C13542 PR; Date: 3/8/1940 (94.8 AC)
POD: SE 1/4 SE 1/4, S 10 & NESW S 11
7S, 39E, W.M.
-  C34740 NPR; Date: 4/16/1965 (19.0 AC)
POD: SE 1/4 SW 1/4, S 36 350'S & 190'W
FM NE COR S 36, 6S, 38E, W.M.
-  C34741 PR; Date: 4/16/1965 (99.0 AC)
POD: SE 1/4 SE 1/4, S 10 & NW 1/4 SW 1/4, S 11
1230'S & 190'E & 2100'S & 530'W BOTH FROM
E 1/4 COR S 10, 7S, 39E, W.M.
-  C51497 NPR; Date: 1893 (14.7 AC)
POD: Smith McPhee Tanner; NW 1/4 SW 1/4, S 32
1500'N & 500'E FM SW COR S 32, 6S, 39E, W.M.
-  C66286 Warm Sp Cr;
Date: 7/14/1986 (19.1 AC)
POD: NE 1/4 SE 1/4, S 6; 1390'N & 1220'W
FM SE COR S 6, 7S, 39E, W.M.

SCALE: 8 INCHES = 1 MILE

**Township 7South Range 39 East W.M.
PRIMARY IRRIGATION**

ALL SHOWN IRRIGATED AREAS
ARE IN TAX LOT #1800.



ALL HATCHED AREAS WILL BE IRRIGATED BY WELLS #1 AND #2.

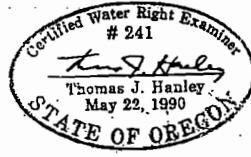
RECEIVED

APR 20 2009
WATER RESOURCES DEPT
SALEM, OREGON

RECEIVED

SEP 27 2007
WATER RESOURCES DEPT
SALEM, OREGON

APPLICANT: JOHN & ROGER INMAN




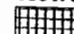
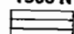

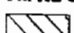
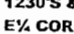
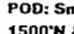
MAP TO ACCOMPANY APPLICATION
FOR
WATER USE PERMIT

SCALE: 1"=660' SEPT., 2007

T 10850

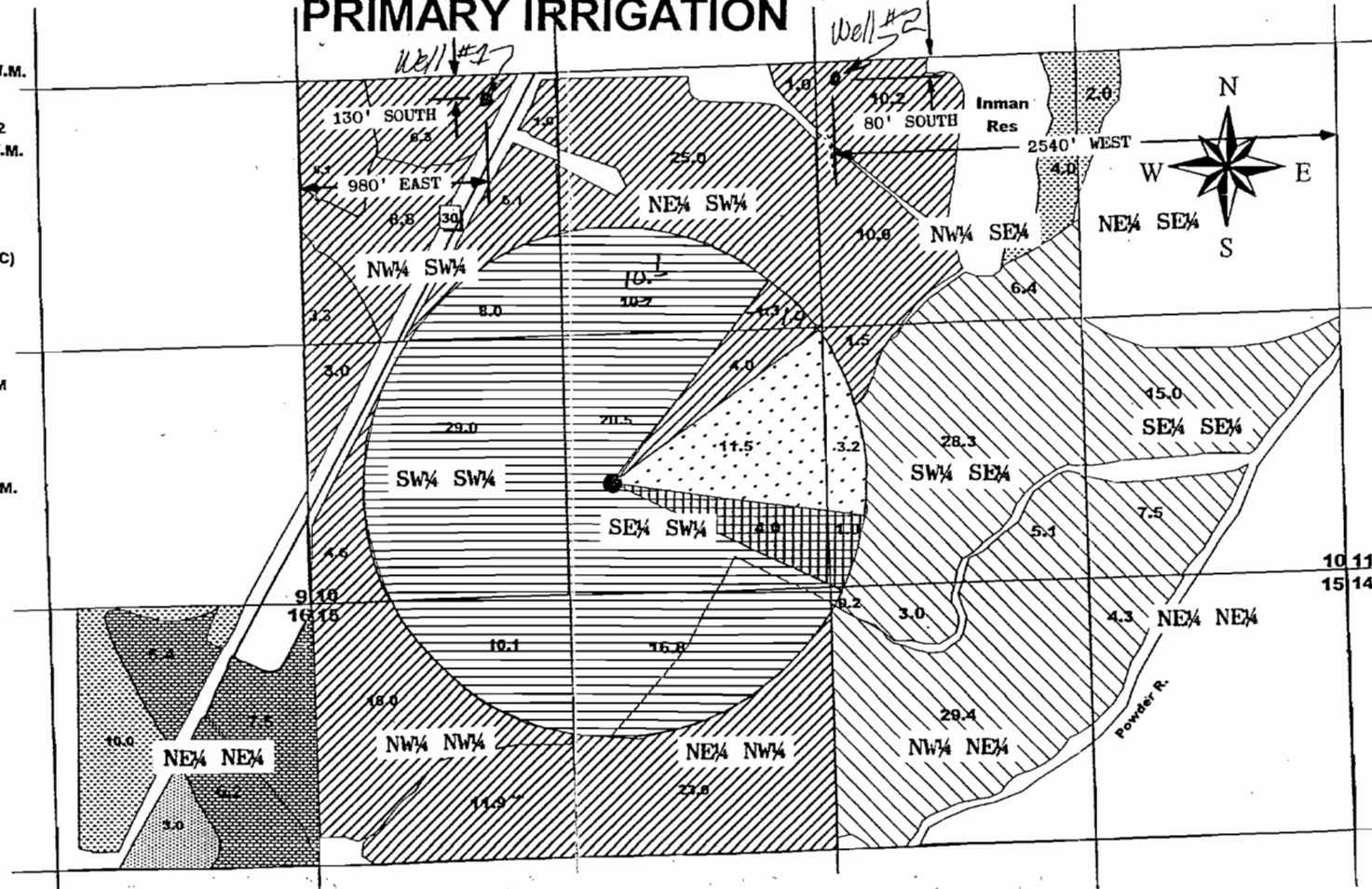
App No G-16938 Permit No G-16358

LEGEND

-  C1498 NPR; Date: 1901 (143.1 AC)
POD: Kelsey Wilson; SE 1/4 SW 1/4, S 36
950'N & 2450'E FM SW COR S 36, 6S, 38E, W.M.
 -  C1463 NPR; Date: 1898 (5.0 AC)
POD: Smith McPhee Tanner; NW 1/4 SW 1/4, S 32
1500'N & 500'E FM SW COR S 32, 6S, 39E, W.M.
 -  C13542 PR; Date: 3/8/1940 (94.8 AC)
POD: SE 1/4 SE 1/4, S 10 & NESW S 11
7S, 39E, W.M.
 -  C34740 NPR; Date: 4/16/1965 (19.0 AC)
POD: SE 1/4 SW 1/4, S 36 350'S & 190'W
FM NE COR S 36, 6S, 38E, W.M.
 -  C34741 PR; Date: 4/16/1965 (99.0 AC)
POD: SE 1/4 SE 1/4, S 10 & NW 1/4 SW 1/4, S 11
1230'S & 190'E & 2100'S & 530'W BOTH FROM
E 1/4 COR S 10, 7S, 39E, W.M.
 -  C51497 NPR; Date: 1893 (14.7 AC)
POD: Smith McPhee Tanner; NW 1/4 SW 1/4, S 32
1500'N & 500'E FM SW COR S 32, 6S, 39E, W.M.
 -  C66286 Warm Sp Cr;
Date: 7/14/1986 (19.1 AC)
POD: NE 1/4 SE 1/4, S 6; 1390'N & 1220'W
FM SE COR S 6, 7S, 39E, W.M.
- SCALE: 8 INCHES = 1 MILE

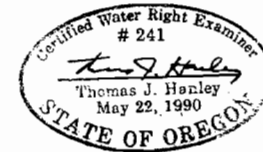
Township 7 South Range 39 East W.M. PRIMARY IRRIGATION

ALL SHOWN IRRIGATED AREAS
ARE IN TAX LOT #1800.



ALL HATCHED AREAS WILL BE IRRIGATED BY WELLS #1 AND #2.

APPLICANT: JOHN & ROGER INMAN



MAP TO ACCOMPANY APPLICATION
FOR
WATER USE PERMIT

SCALE: 1"=660'

SEPT., 2007

RECEIVED

SEP 27 2007

WATER RESOURCES DEPT
SALEM, OREGON

App No G-16938