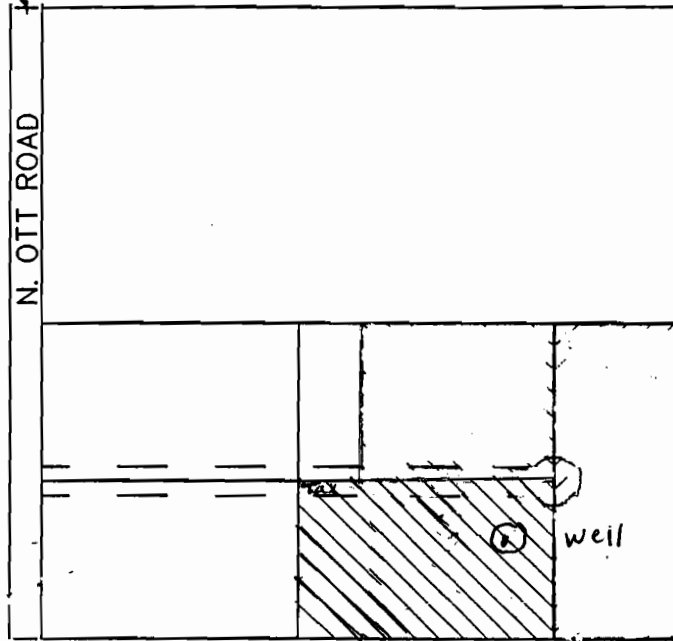


T 5N, R 29E, WM  
NW1/4 SW1/4, SECTION 31  
UMATILLA COUNTY

Tax Lot 403

WEST  
1/4 CORNER



SCALE 1" = 400'

⊙ WELL - Located approximately 1140' S  
and 980' E of W 1/4 corner of  
Section 31



3.9 acres to be irrigated in NW 1/4, SW 1/4, Section 31  
T. 5N R. 29E W.M. Tax Lot 403

RECEIVED

APR 13 2007

WATER RESOURCES DEPT  
SALEM OREGON

app no G-16833

This map was prepared for Assessment purposes only.



SW1/4 SEC 31 T 5N R 29E WM  
UMATILLA COUNTY, OR

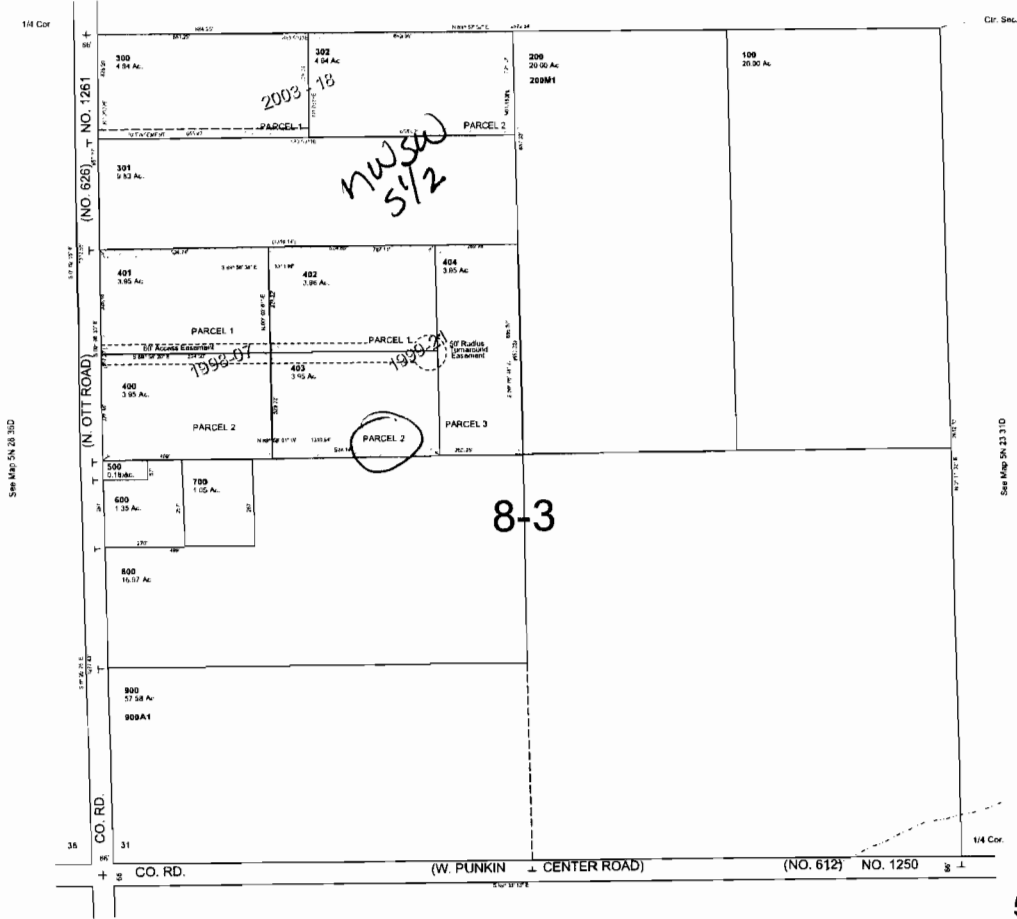
11/16/03

5N2931C

AERIAL PHOTO NO. 1P-101

SCALE: 1" = 200'

See Map 5N 29 31B



See Map 5N 29 31D

See Map 5N 29 31D

See Map 4N 29 06B

5N2931C