

THIS MAP WAS PREPARED FOR ASSESSMENT PURPOSE ONLY

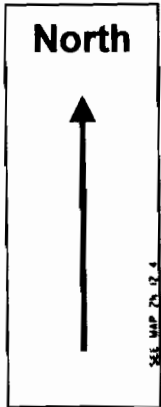
SW 1/4 SEC. 3 T.2N. R.12E. W.M.
WASCO COUNTY

2N 12 3C

1" = 500'

Rowena Dell Water Association Water System Map (p 1)

CEN. SEC.



1 1/4" extension to
1127 Canyon
Way

..... = area of system

6" main

**Main Well (#1)
and Reservoir**
North 965 & East 780
from SW Corner
Section 3

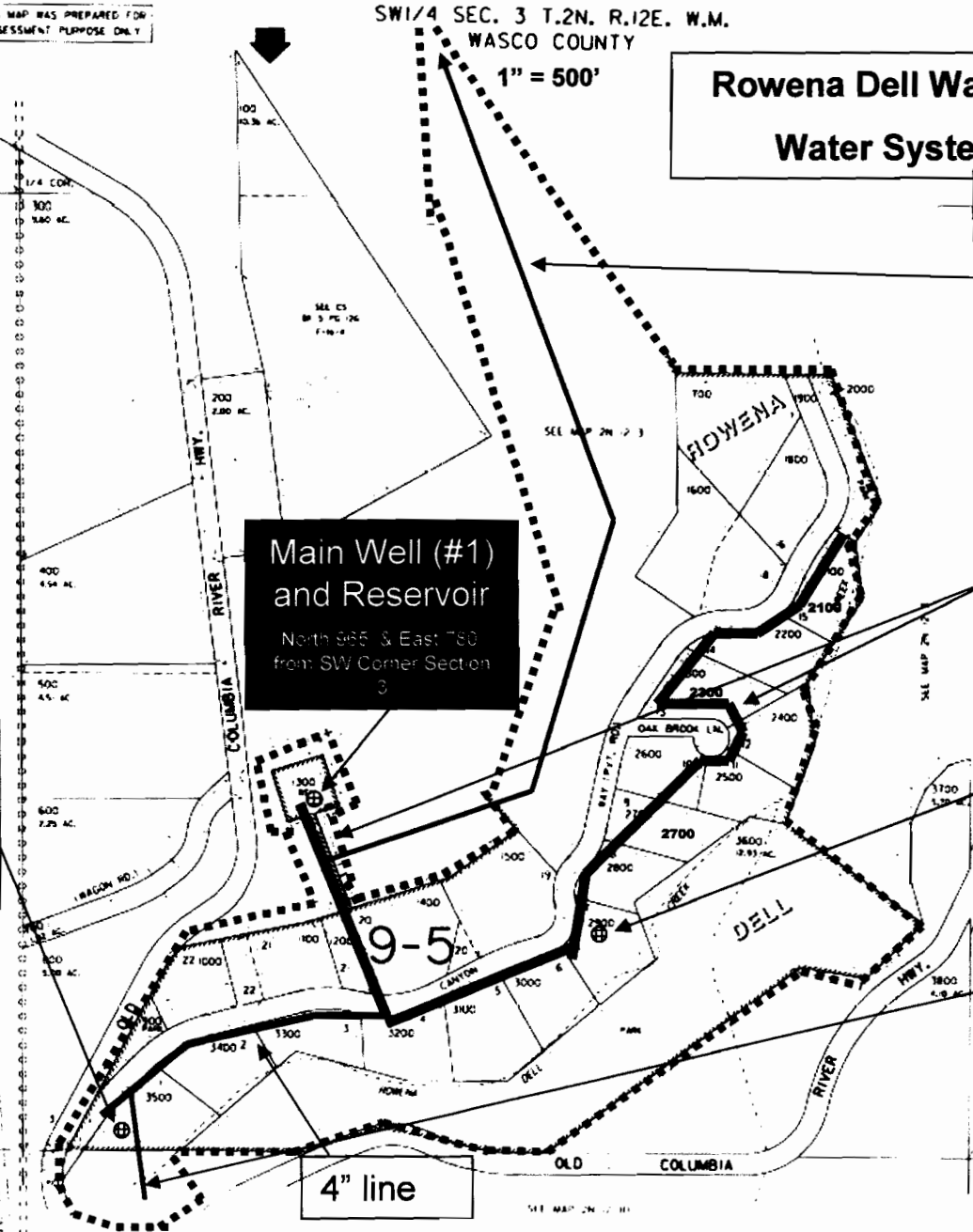
**Backup Well
(#3)**
North 600 & East
1 645 from SW Corner
Section 3

**Backup Well
(#2)**
North 75 & East 310
from SW Corner
Section 3

1" extension to
6805 Hwy 30 W

4" line

RECEIVED
MAY 05 2005
WATER RESOURCES DEPT
SALEM, OREGON



REV 510 1 21 99, 9C
2N 12 3C

app no G-16454
perm # no

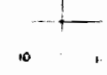
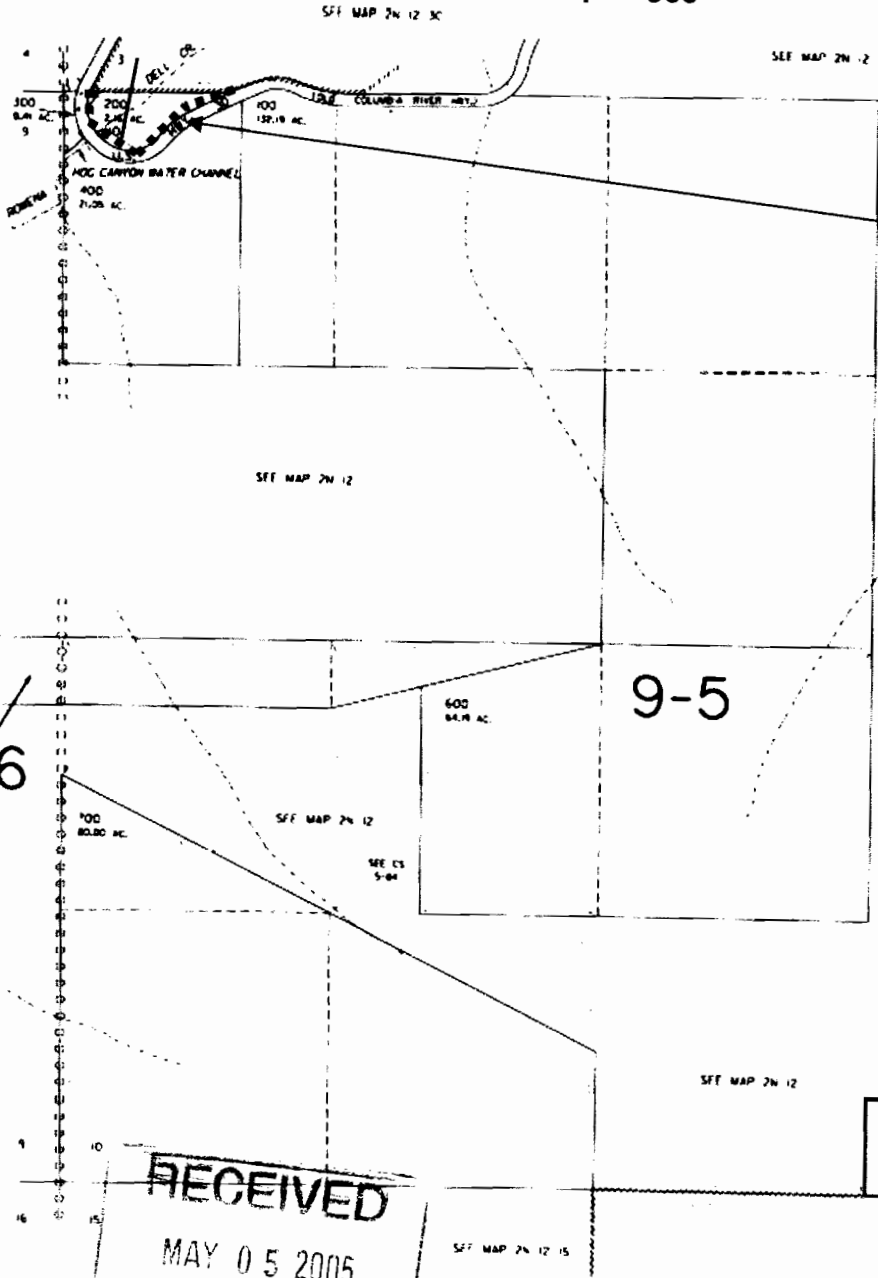
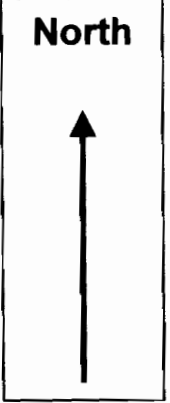
THIS MAP WAS PREPARED FOR
ASSESSMENT PURPOSE ONLY

SECTION 10 T.2N. R.12E. W.M.
WASCO COUNTY

1" = 900'

2N 12 10

**Rowena Dell Water Association
Water System Map (p 2)**



water user
6805 Hwy 30 W

PARCEL 200

app no G-16454
Permit no

RECEIVED
MAY 05 2005
WATER RESOURCES DEPT
SALEM, OREGON

800
448 AC. 9-5
PDR. TR.

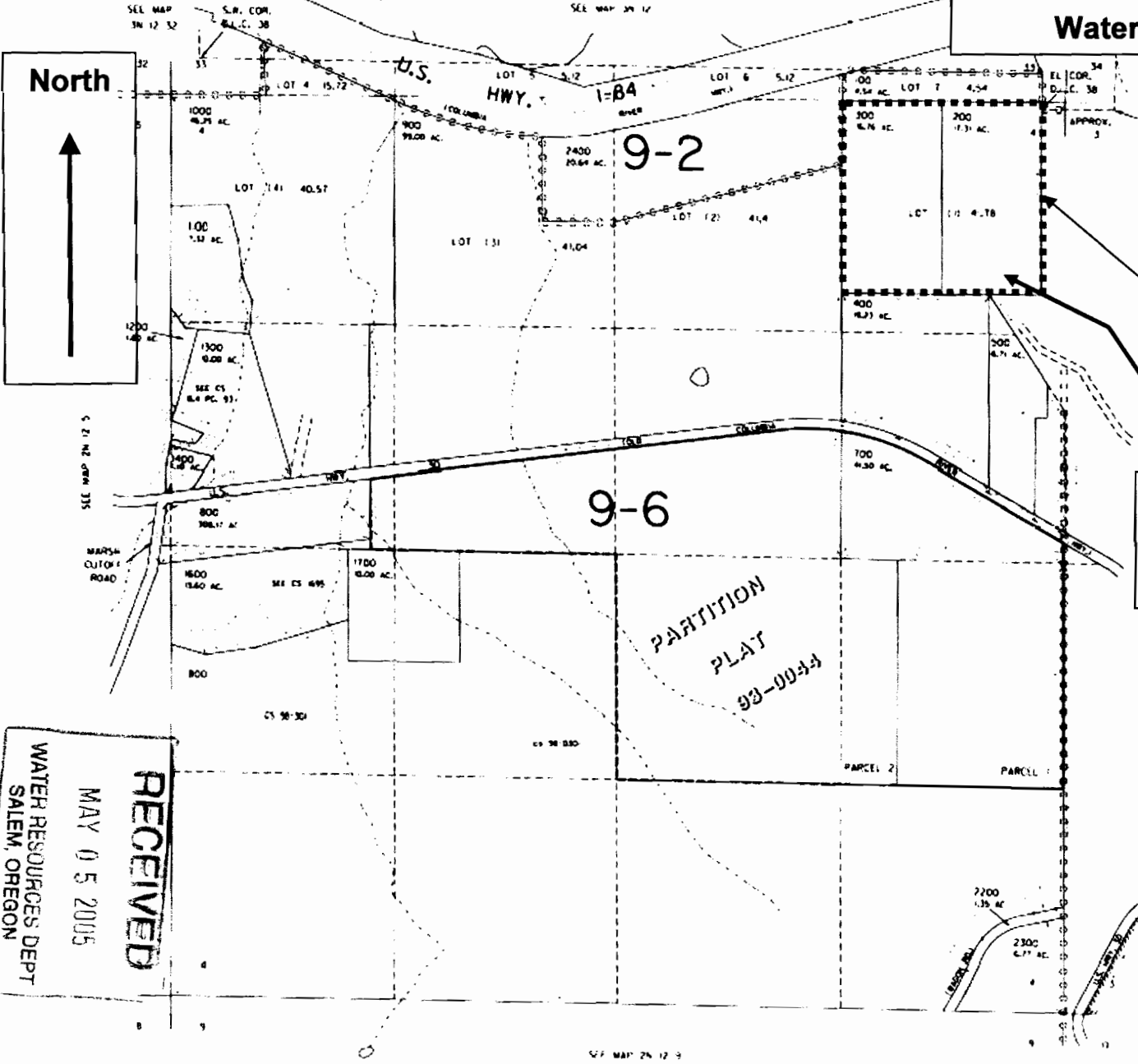
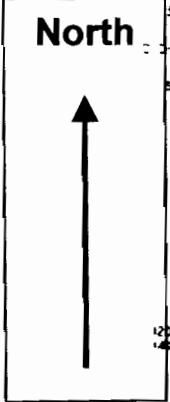
Revised
9/8/2003. 9C
2N 12 10

THIS MAP WAS PREPARED FOR
ASSESSMENT PURPOSE ONLY

SECTION 4 T.2N. R.12E. W.M.
WASCO COUNTY
1" = 900'

2N 12 4

**Rowena Dell Water Association
Water System Map (p 3)**



**water user
1127 Canyon Way**

app no G-16454
Permit no

RECEIVED
MAY 05 2005
WATER RESOURCES DEPT
SALEM, OREGON

Revised
1/14/2003, RT
2N 12 4

SEE MAP 2N 12 3

SEE MAP 2N 12 3

SEE MAP 2N 12 3