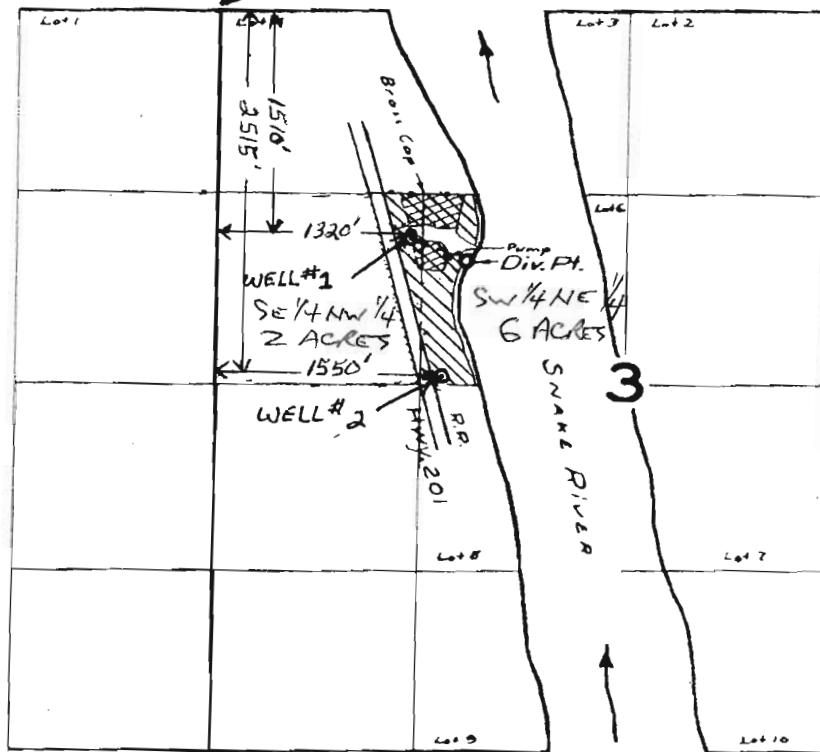


T.22 S.R.46 E.W.M.

1500 N. Will
Transmittal

16/11

NW CORNER of sec 3



Supplemental Certificate # 27489



New Primary Ground Water Application

Application No. 31819... Permit No. 25147.
IN NAME OF

E.E. EASTMAN

Surveyed Sept. 17 1959, by Tom B. [Signature]

RECEIVED

FEB 27 2008

WATER RESOURCES DEPT
SALEM, OREGON
1959-E