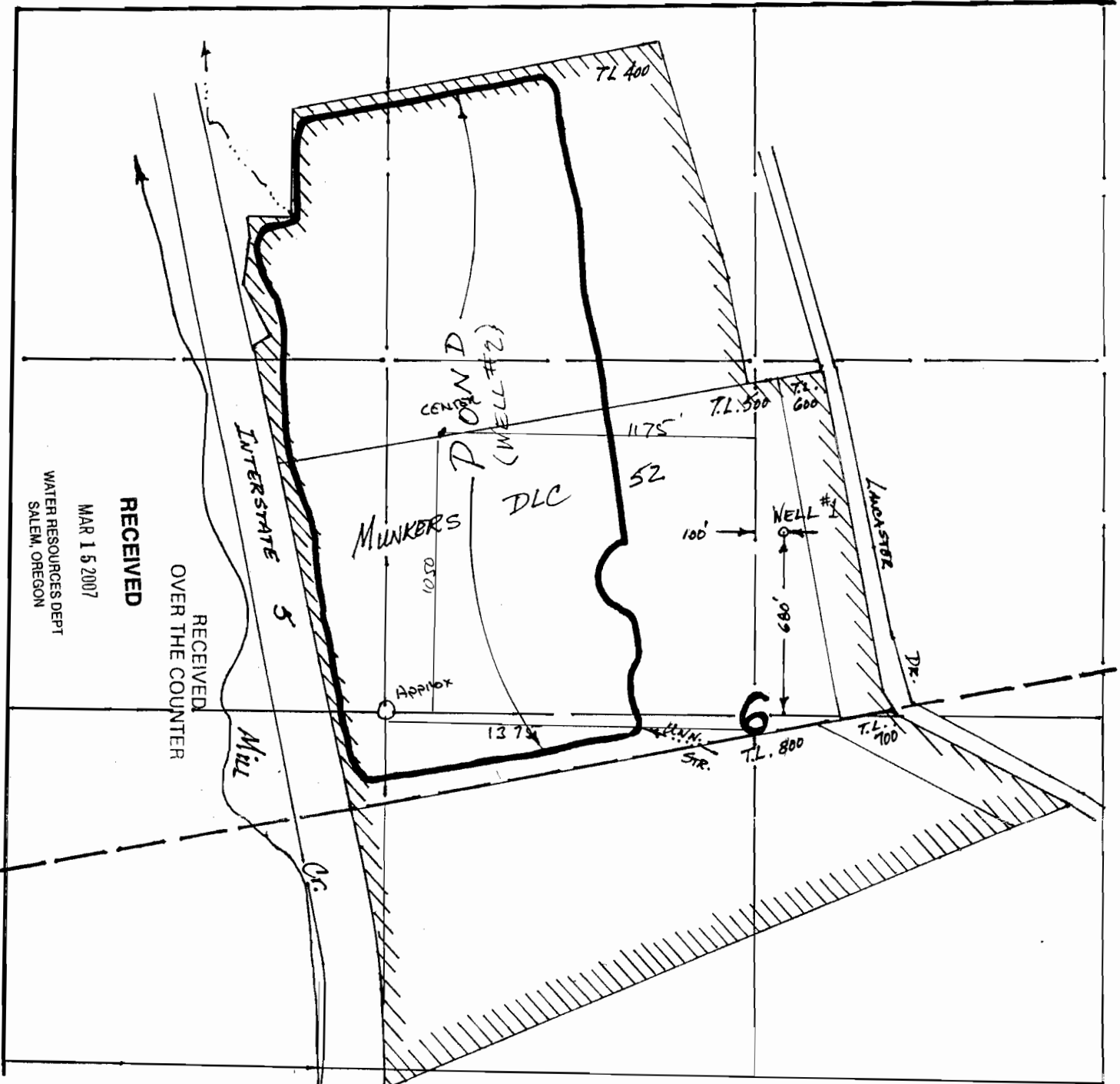


T 8 S., R. 2 W., W.M.



RECEIVED  
 MAR 15 2007  
 WATER RESOURCES DEPT  
 SALEM, OREGON

RECEIVED  
 OVER THE COUNTER

WORK COPY

INDUSTRIAL USE AREA BOUNDARY

*Application Map for*  
*Walling Properties, LLC*

AS FROM INFO PROVIDED BY STEVE APPLEGATE 3-21-2007



SCALE 1" = 400'

App No G-16815

01/07 *SR*