

Attachment A Groundwater Application Map
 This is tax lot map # T.1N., R.32E.

Well Location

SW 1/4 SE 1/4 Sec 10,
 T.1N., R.32E., W.M.;
 820' N. & 410' E. from
 the SW 1/4 corner Sec. 10. TL 1800
 Lot 8, Umatilla Co. Basin 7

* See Final proof map G-7967 Same well (Att. C)

RECEIVED

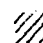
NOV 15 2007

WATER RESOURCES DEPT
 SALEM, OREGON

Scale: 1" = 1320'

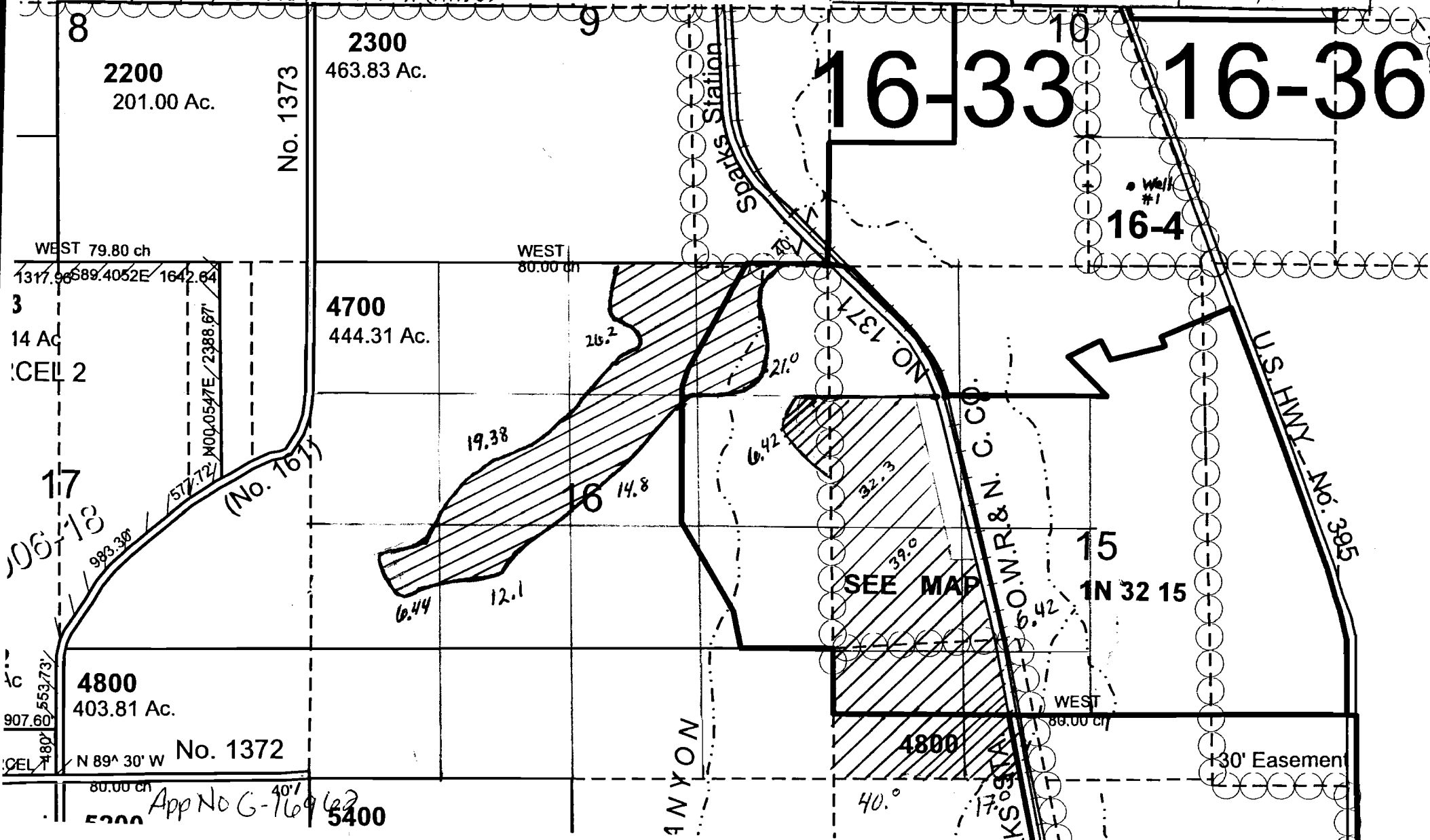
KEY

POA = • (Well #1)

POU =  (241.06 ac)

241.06 Acres broken out by 1/4 1/4 & Tax lot (See Att. B for TL 1800 & 500 info.)

Sec. 16	26.2 NWN TL 4700	39.0 NWSW TL 500
6.44 NWSW TL 4700	21.0 NENE TL 1800	6.42 NESW TL 500
12.1 NESW TL 4700	6.42 SE NE TL 500	40.0 SWSW TL 500, 4800
19.38 SENW TL 4700	Sec. 15	17.0 SESW TL 500, 4800
14.8 SW NE TL 4700	32.3 SWNW TL 500	T.1N., R.32E.



App No G-16962
 5400