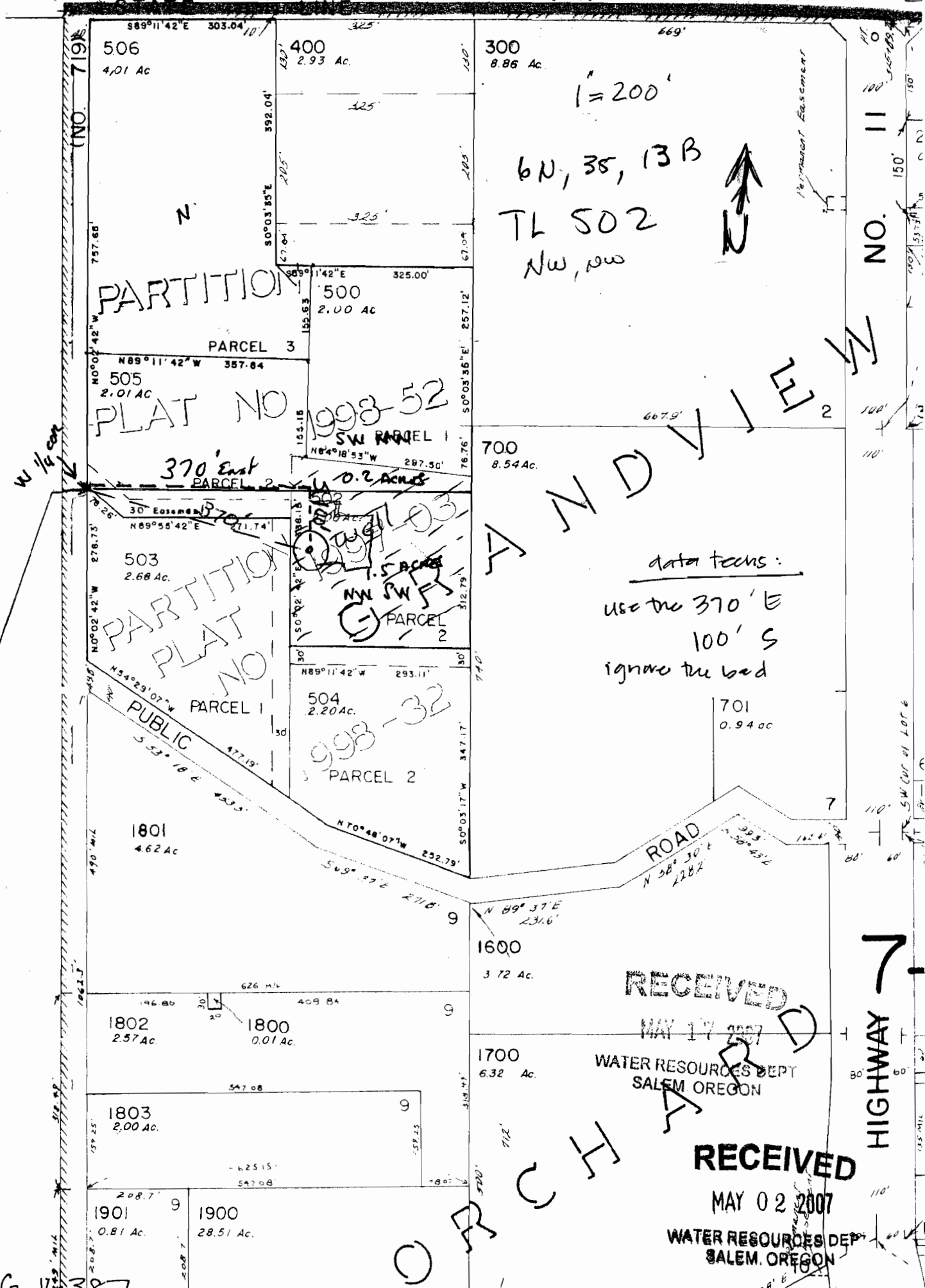


Point of Beginning 50301'31"E, 769.28' from NW Corner Sec 13.

See Map 6N 35 140

AppNo G-14387



PARTITION

PLAT NO 1998-52

A N D V I E W

PARTITION
PLAT NO

data techs:
use the 370' E
100' S
ignore the bed

RECEIVED

MAY 17 2007

WATER RESOURCES DEPT
SALEM OREGON

RECEIVED

MAY 02 2007

WATER RESOURCES DEPT
SALEM OREGON

HIGHWAY 7

CHART

506
4.01 Ac

400
2.93 Ac

300
8.86 Ac

505
2.01 Ac

500
2.00 Ac

700
8.54 Ac

503
2.68 Ac

504
2.20 Ac

701
0.94 ac

1801
4.62 Ac

1600
3.72 Ac

1802
2.57 Ac

1800
0.01 Ac

1700
6.32 Ac

1803
2.00 Ac

1901
0.81 Ac

1900
28.51 Ac

1" = 200'

6N, 35, 13B
TL 502
NW, NW



W 1/4 cor

(NO) 719K

NO.

NO.

NO.

NO.

NO.

NO.

NO.

NO.

NO.

NO.

NO.

NO.

NO.

NO.

NO.