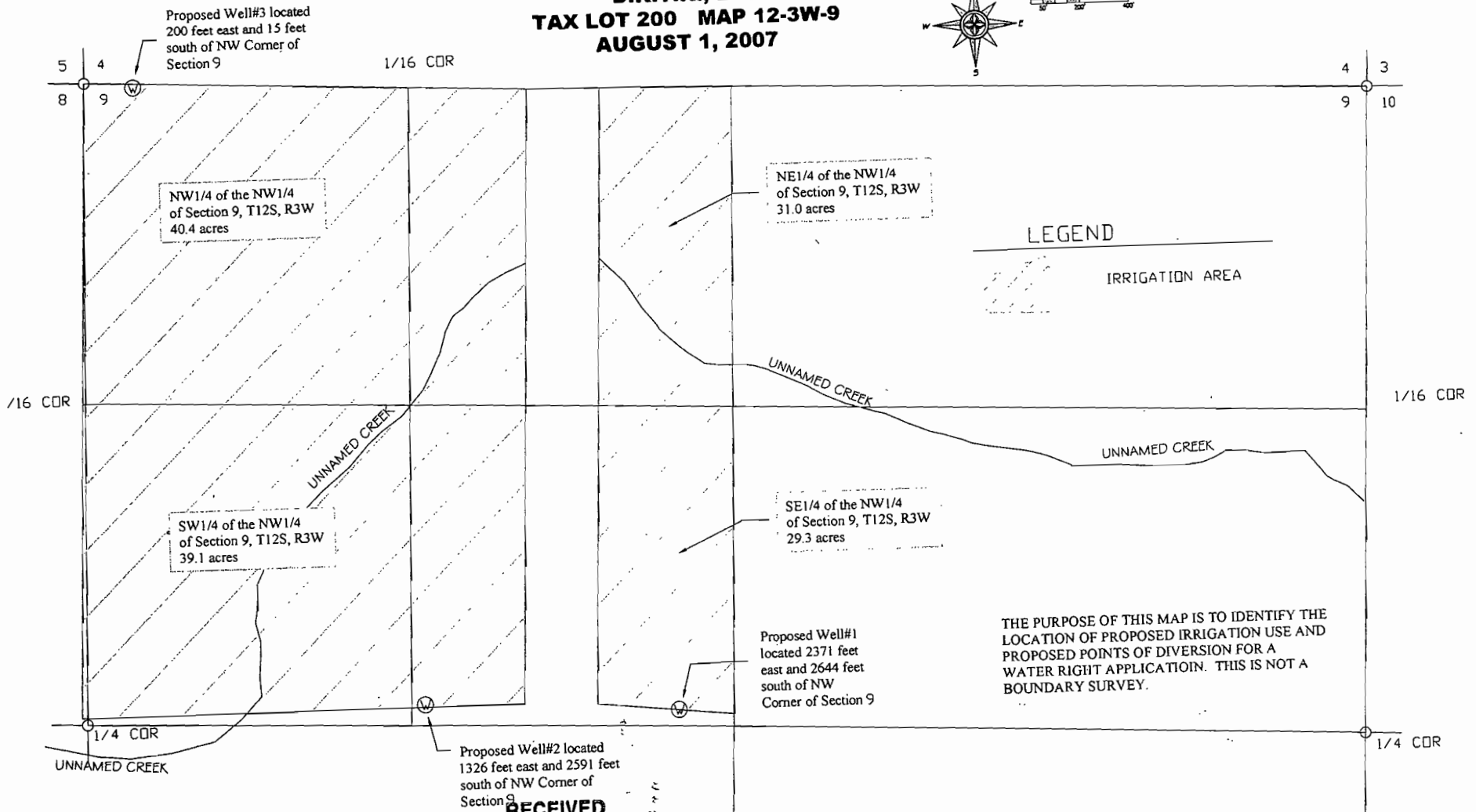
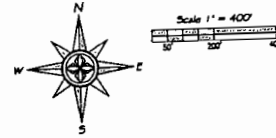


**APPLICATION MAP
D.K.T.K., LLC
TAX LOT 200 MAP 12-3W-9
AUGUST 1, 2007**



Proposed Well#2 located
1326 feet east and 2591 feet
south of NW Corner of
Section 9

Proposed Well#1
located 2371 feet
east and 2644 feet
south of NW
Corner of Section 9

Proposed Well#3 located
200 feet east and 15 feet
south of NW Corner of
Section 9

RECEIVED
AUG 06 2007
WATER RESOURCES DEPT
SALEM, OR

Appno G-16912