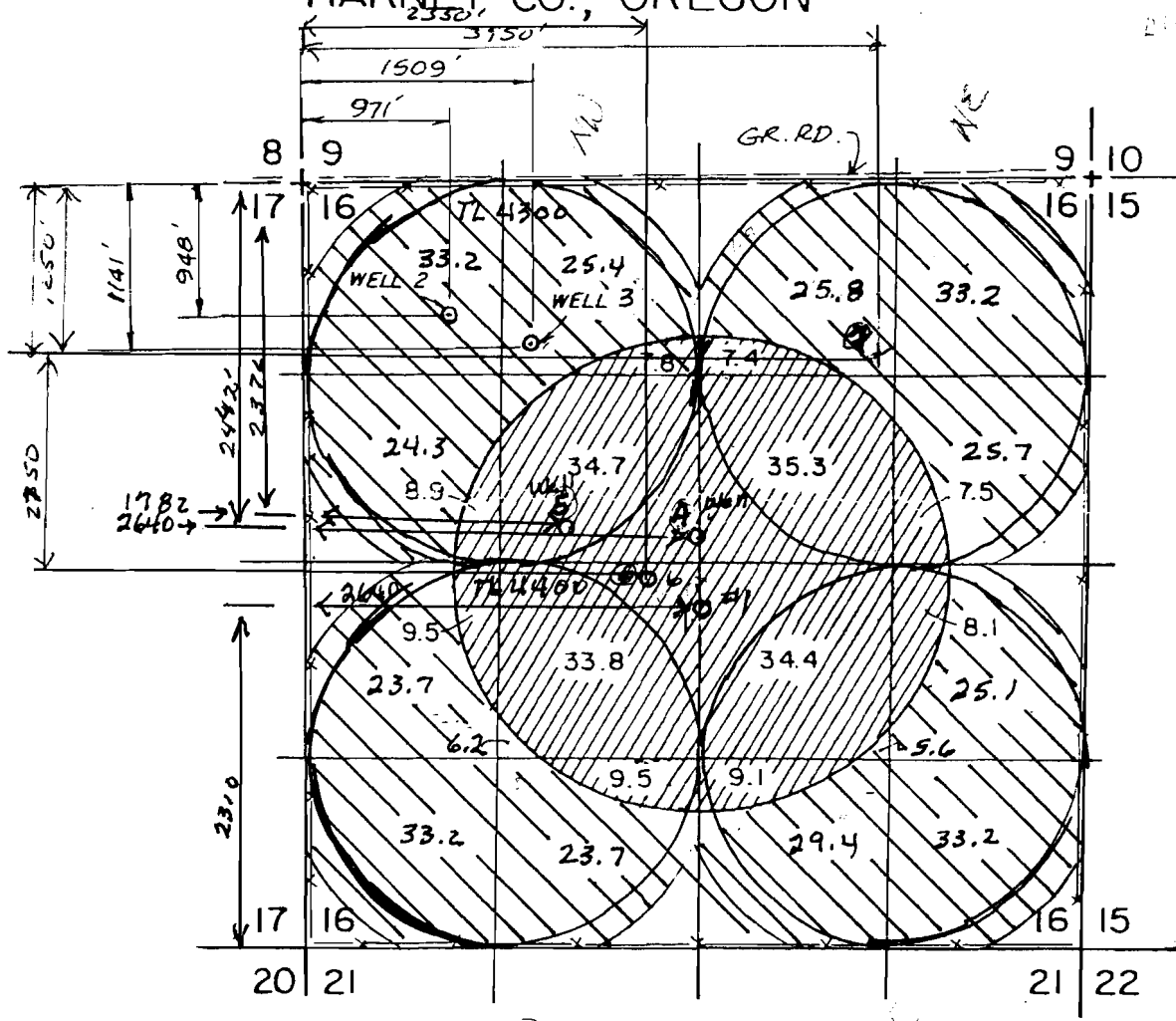


T. 24S., 32 1/2 E., W.M.

HARNEY CO., OREGON




SCALE 1" = 1320'

- Well # 1 = 2310' N 2640' E From SW Cor Sec 16 T-24-S 32 1/2 E
- Well # 2 = 948' S 971' E From NW Cor Sec 16 T-24-S R-32 1/2 -E
- Well # 3 = 1141' S 1509' E From NW Cor Sec 16 T-24-S R-32 1/2 -E
- Well # 4 = 2442' S 2640' E From NW Cor Sec 16 T-24-S R-32 1/2 -E
- Well # 5 = 2376' S 1782' E From NW Cor Sec 16 T-24-S R-32 1/2 -E
- well # 6 = 2750' S 2350' E "
- well # 7 = 1250' S 3950' E "

RECEIVED

APR 30 2007

WATER RESOURCES DEPT
SALEM, OREGON

 place of use
Appno G-16843