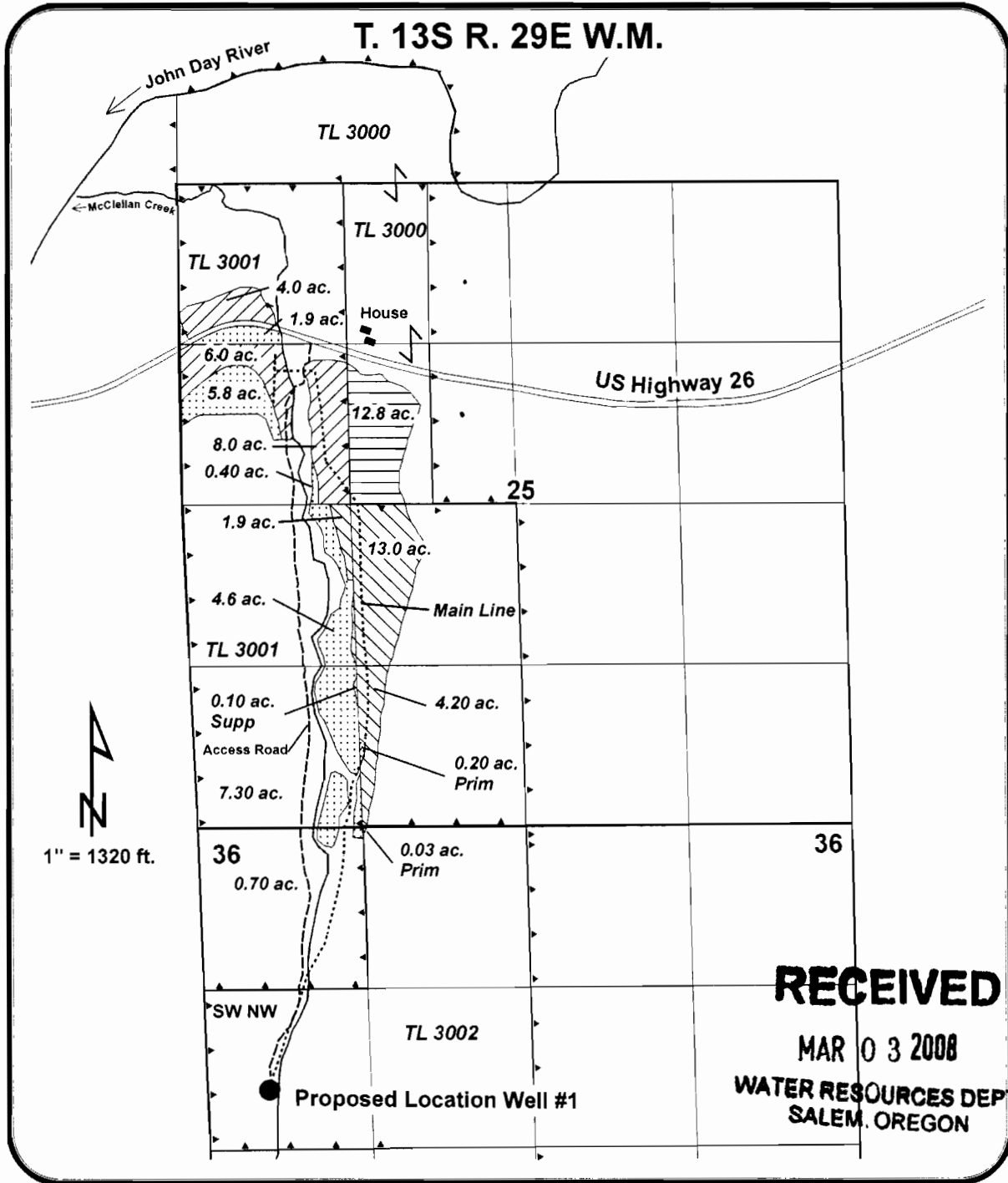
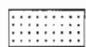
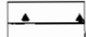

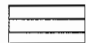



**Application Map
For
Roger and Meredith Ediger**



Well is located approximately 500 feet east and 2160 ft south from the northwest corner of section 36 being within the SW1/4 of the NW 1/4 of Section 36 T. 13S R. 29E W.M.

-  Proposed primary irrigation
-  Tax Lot Boundary
-  Supplemental from well, Primary C-24864
-  Supplemental from well, Primary C-25337
-  Supplemental from well, Primary C-25726

App No G-17015