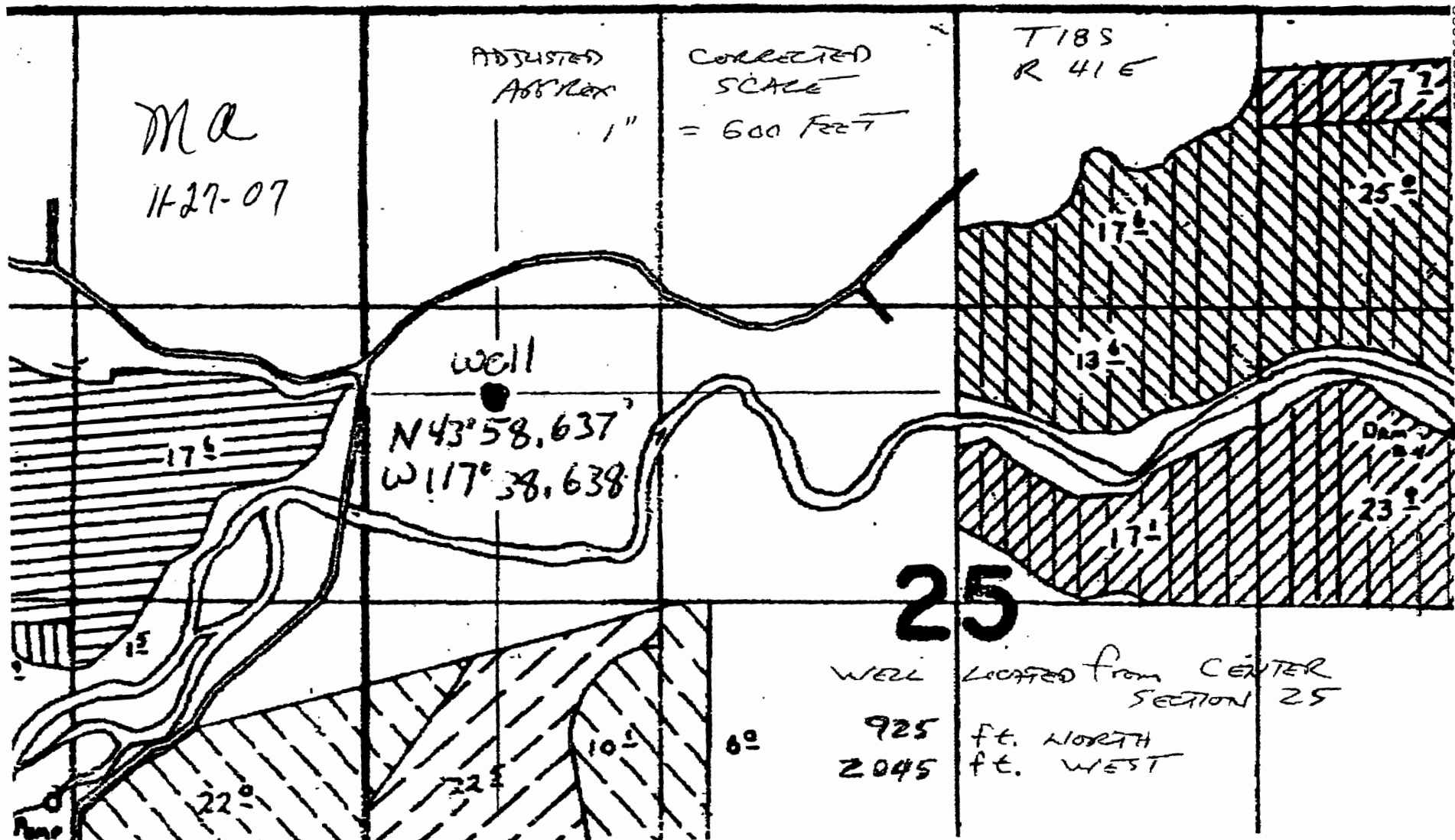


PRIMARY - APP. 57883 SUPPLEMENTAL - APP. G-8938
 PRIMARY - T-4034 SUPPLEMENTAL - APP. G-8938
 PRIMARY - APP. G-3359 SUPPLEMENTAL - APP. 45544, G-4686
 PRIMARY - D-118 SUPPLEMENTAL - APP. G-3359, G-4686
 PRIMARY - APP. G-4684 SUPPLEMENTAL - APP. 45544, G-4686

MARK LOC:

#1 - 60'S. & 50'E. fr. N
 #2 - 20'S. & 440'W. fr. N
 #3 - 1490'N. & 2030'W.
 #4 - 1860'S. & 410'W. fr. N
 Div. Pt. Loc: 1280'S. & 5'

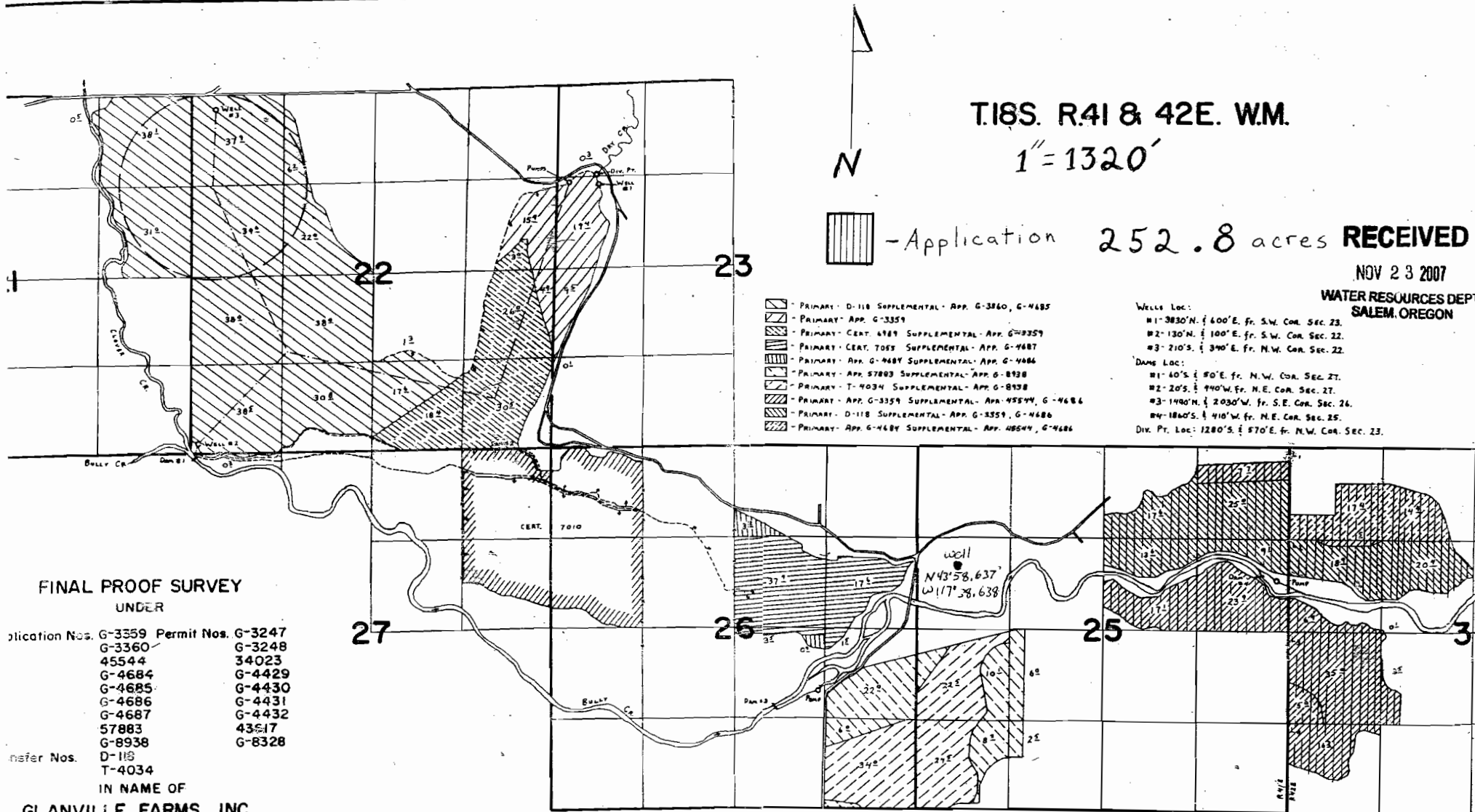
11/27/2007 10:03




5039860901

WRD 1ST FL

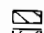
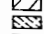

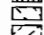
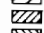
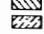




PAGE 03/08



T.18S. R.41 & 42E. W.M.
 1" = 1320'

 - Application 252.8 acres **RECEIVED**

NOV 23 2007
 WATER RESOURCES DEPT
 SALEM, OREGON

-  - PRIMARY - D-118 SUPPLEMENTAL - APP. G-3360, G-4685
-  - PRIMARY - APP. G-3359
-  - PRIMARY - CERT. 4789 SUPPLEMENTAL - APP. G-49359
-  - PRIMARY - CERT. 7055 SUPPLEMENTAL - APP. G-4687
-  - PRIMARY - APP. G-4687 SUPPLEMENTAL - APP. G-4686
-  - PRIMARY - APP. 57883 SUPPLEMENTAL - APP. G-8938
-  - PRIMARY - T-4034 SUPPLEMENTAL - APP. G-8938
-  - PRIMARY - APP. G-3359 SUPPLEMENTAL - APP. 45544, G-4686
-  - PRIMARY - D-118 SUPPLEMENTAL - APP. G-3359, G-4686
-  - PRIMARY - APP. G-4687 SUPPLEMENTAL - APP. 48544, G-4686

- Wells Loc:
- #1 - 3850' N. & 400' E. fr. S.W. Cor. Sec. 23.
 - #2 - 130' N. & 100' E. fr. S.W. Cor. Sec. 22.
 - #3 - 210' S. & 390' E. fr. N.W. Cor. Sec. 22.
- DAMS Loc:
- #1 - 40' S. & 80' E. fr. N.W. Cor. Sec. 27.
 - #2 - 20' S. & 990' W. fr. N.E. Cor. Sec. 27.
 - #3 - 1480' N. & 2030' W. fr. S.E. Cor. Sec. 24.
 - #4 - 1860' S. & 410' W. fr. N.E. Cor. Sec. 25.
- Div. Pt. Loc: 1280' S. & 570' E. fr. N.W. Cor. Sec. 23.

**FINAL PROOF SURVEY
 UNDER**

Application Nos. G-3359 Permit Nos. G-3247
 G-3360 G-3248
 45544 34023
 G-4684 G-4429
 G-4685 G-4430
 G-4686 G-4431
 G-4687 G-4432
 57883 43517
 G-8938 G-8328

Transfer Nos. D-118
 T-4034

IN NAME OF
GLANVILLE FARMS, INC

Surveyed July 31, 1979, by C. L. HUGHES

Ann No G-1109107