

The water will be used in Lake
It is in The Goose / summer basin

RECEIVED
MAR 17 2005
WATER RESOURCES DEPT
SALEM, OREGON

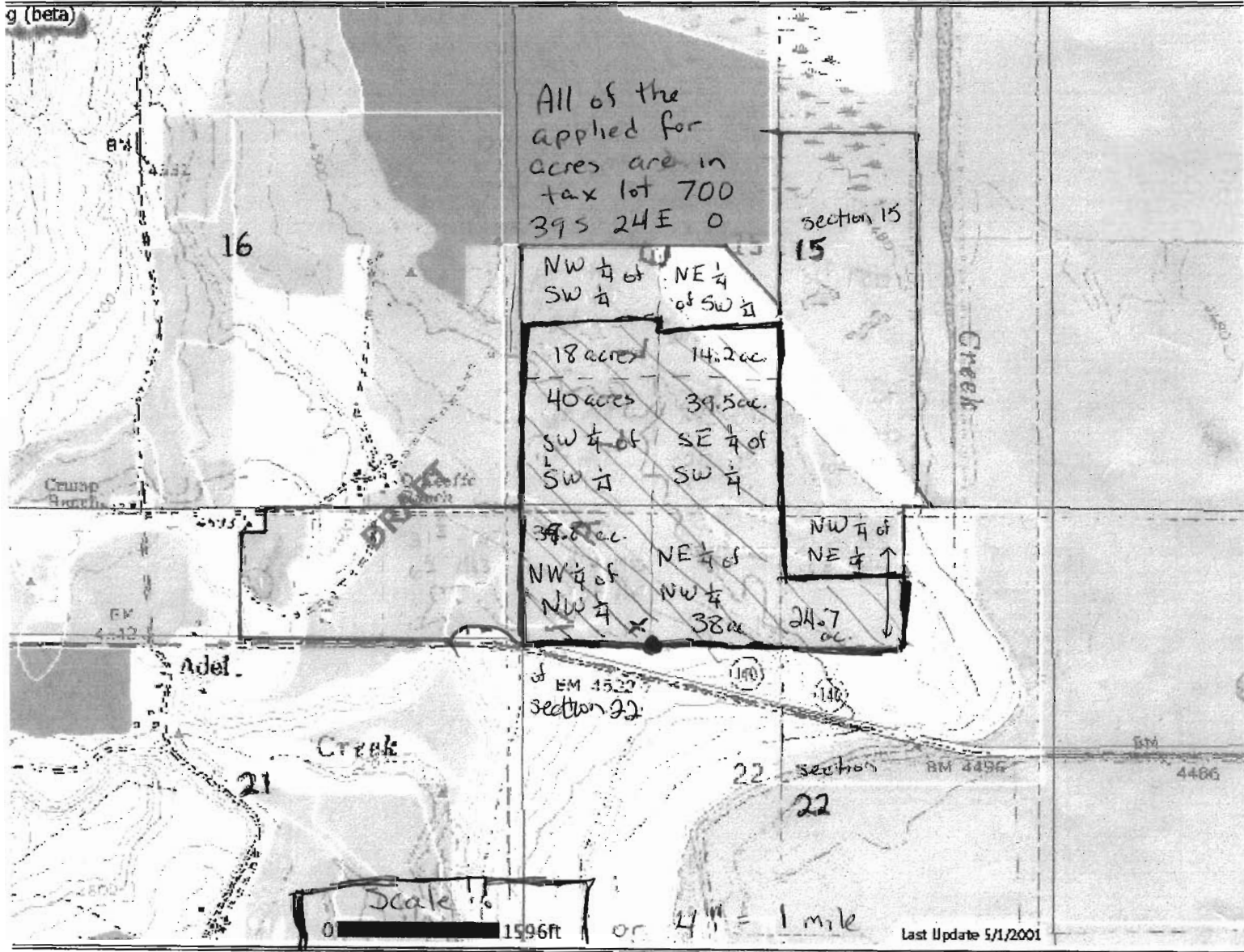
sources Water Right Mapping

Township 39 S Range 24 E



(N)

Bill Cleland



X - well location - 100' feet North and 35' west of indicated quarter marker. • That reference corner is RLS 1664

App No
G-16426

Enclosed in the black are the acres applied for water rights. see attached sheet for

are at [Home](#) • [Help](#) • [Disclaimer](#) • [Data Dictionary](#) • [FAQ](#)

RECEIVED
MAR 25 2005
WATER RESOURCES DEPT
SALEM, OREGON