

WELL LOCATION IS:
 1595' E 9 80'S OF NW SECTION 17

DAVID BAKER
 68398 GEORGE CYRUS I
 SYSTEM, OR

SECTION 17 T.15S. R.11E.W.M.
 DESCHUTES COUNTY

15 11

1"=600'

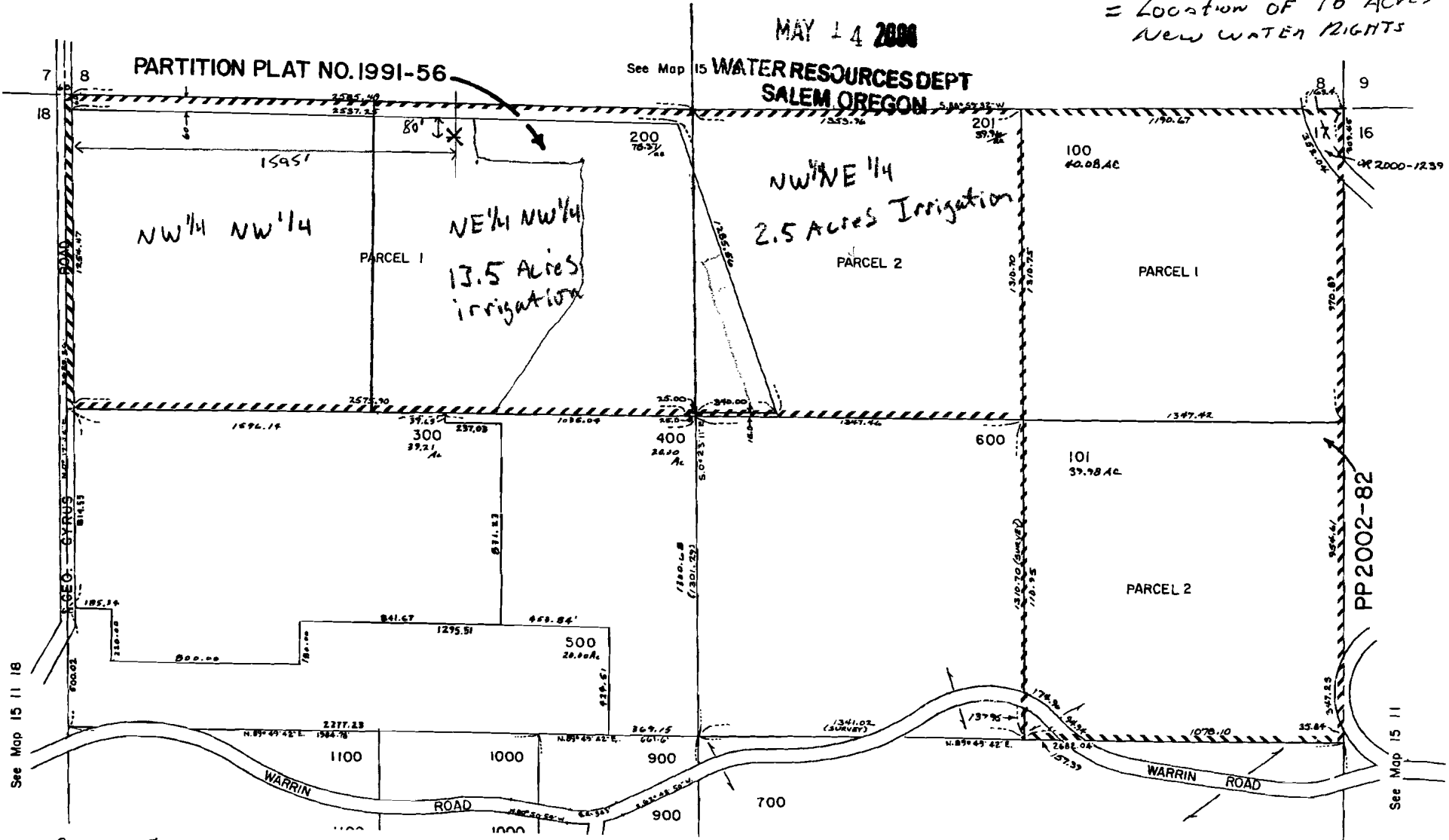
RECEIVED

MAY 14 2004

X = New well

= Location of 16 Acres
 New Water Rights

1-26-00
 10-31-03
 4-4-07
 10-23-07



APP NO G-17053

↑ North

PP 2002-82

See Map 15 11 18

See Map 15 11