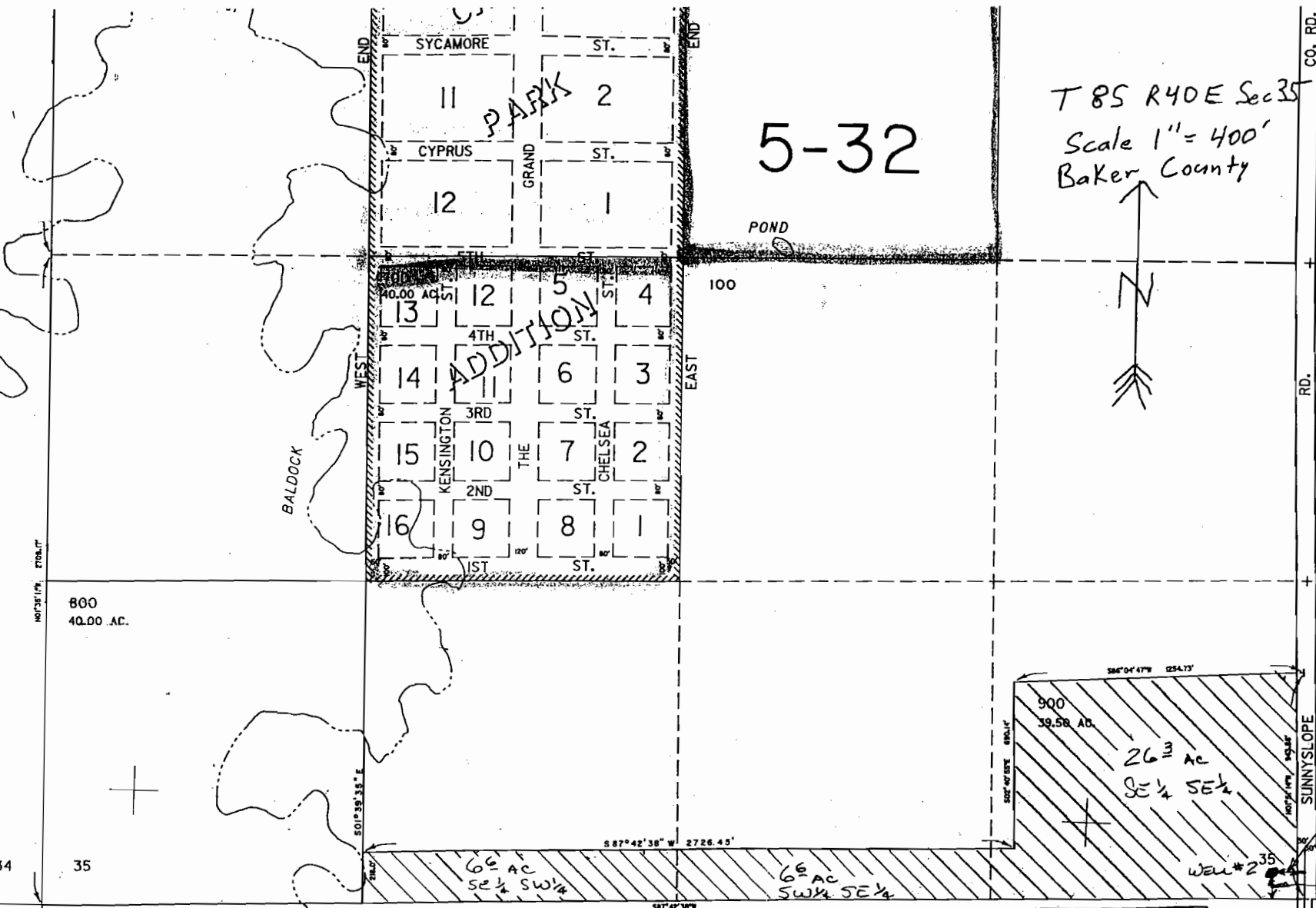


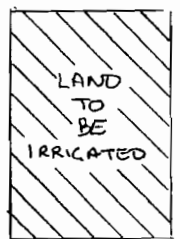
5-32

T 8S R 40E Sec 35 W.M.
Scale 1" = 400'
Baker County



SEE MAP 8 40

Ed & Laurie McAdams
2500 2nd Street
Baker City, Oregon
87814



SCALE: 1" = 400'

100' to 200'
LOCATION WILL BE IN THIS AREA FOR WELL 432,000 #2.

100' to 200'

RECEIVED
OCT 01 2007
WATER RESOURCES DEPT.
SALEM, OREGON

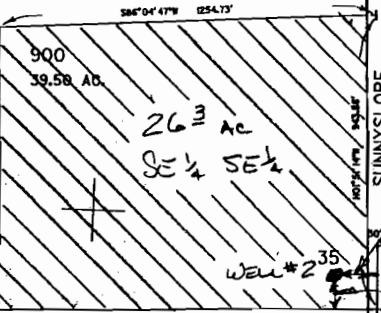
SEE MAP 9 40 2

RECEIVED
26005
WATER RESOURCES DEPT.
EASTERN REGION

8 40 35
DEO 12-13-94

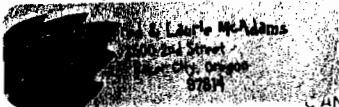
2,704,000

800
40.00 AC.



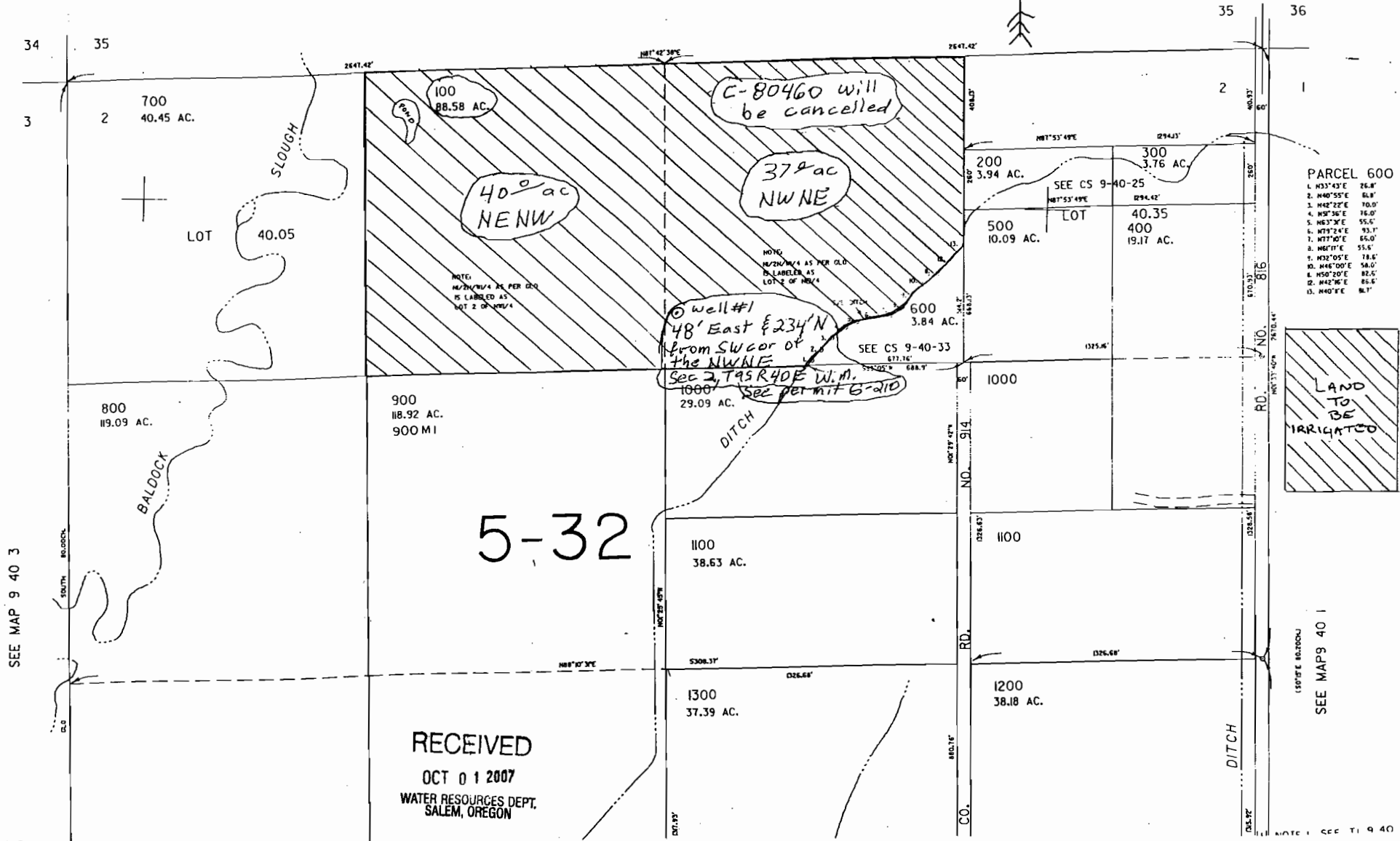
BAKER COUNTY

Scale 1" = 400'
T9S R40E Sec 2 W.M.



SEE MAP 8 40 35

CANCELLED
1 200M
1 400M
1 600M



RECEIVED
OCT 01 2007
WATER RESOURCES DEPT.
SALEM, OREGON

ADD No G-110937

- PARCEL 600
1. N33°43'E 26.8'
 2. N40°55'E 61.8'
 3. N42°22'E 70.0'
 4. N58°36'E 76.0'
 5. N63°3'E 55.5'
 6. N73°24'E 93.1'
 7. W77°0'E 65.0'
 8. N67°1'E 55.6'
 9. N32°05'E 78.6'
 10. N48°00'E 58.0'
 11. N50°20'E 82.5'
 12. N42°16'E 85.6'
 13. N40°1'E 91.7'