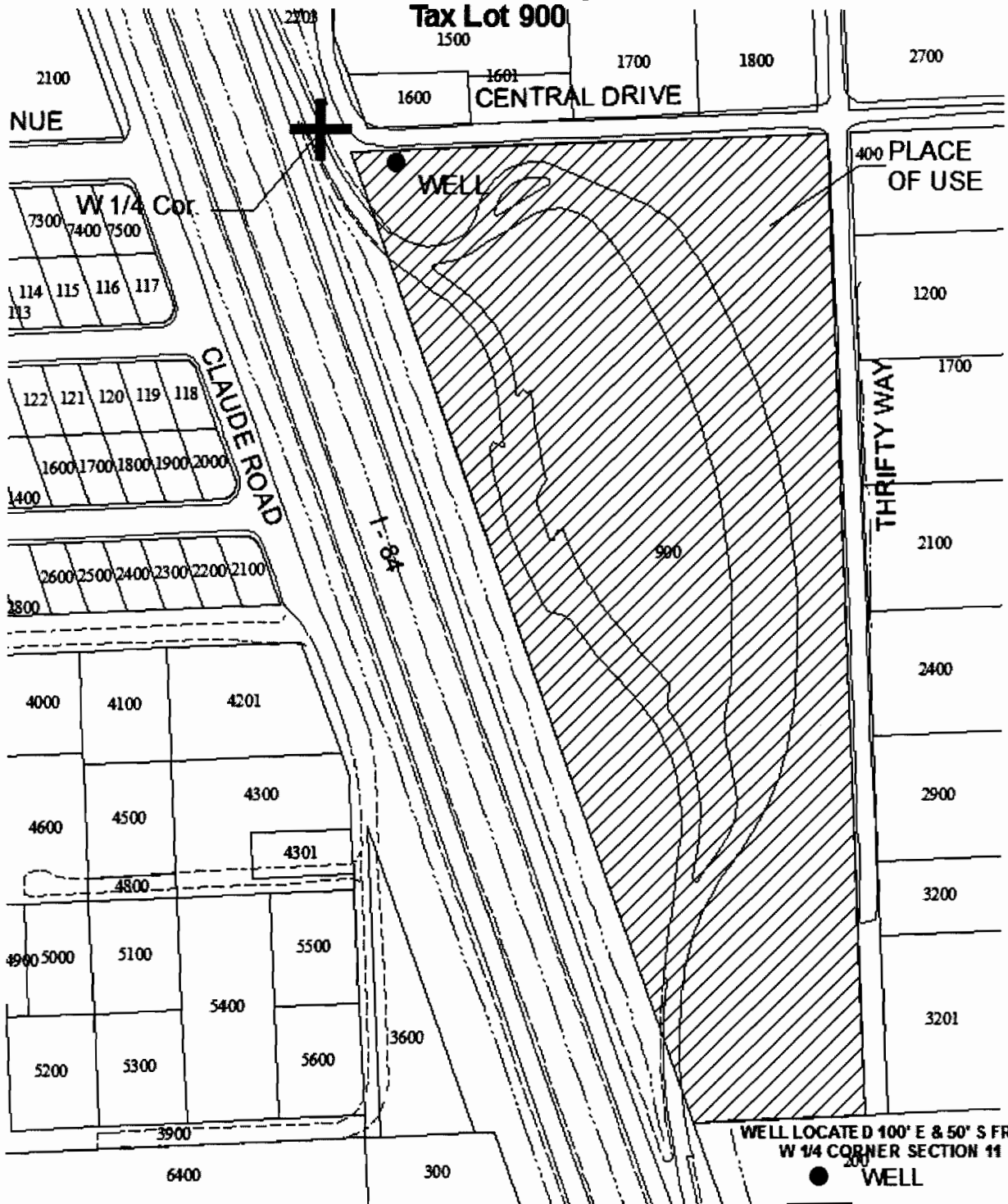


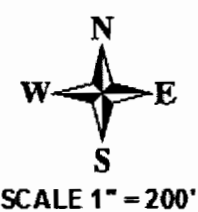
Township 18 South, Range 47 East, W.M.  
 NW 1/4 SW 1/4 of Section 11  
 Malheur County

Tax Lot 900



WELL LOCATED 100' E & 50' S FROM  
 W 1/4 CORNER SECTION 11

- WELL
- ▨ Place of Use



**WATER RIGHT APPLICATION MAP**  
 to  
 Appropriate Groundwater  
 in name of  
 Oregon Department of Transportation  
 March 2008

**RECEIVED**

MAR 31 2008

WATER RESOURCES DEPT  
 SALEM, OREGON

FILED BY TLD MARCH 26, 2008

G-17029

