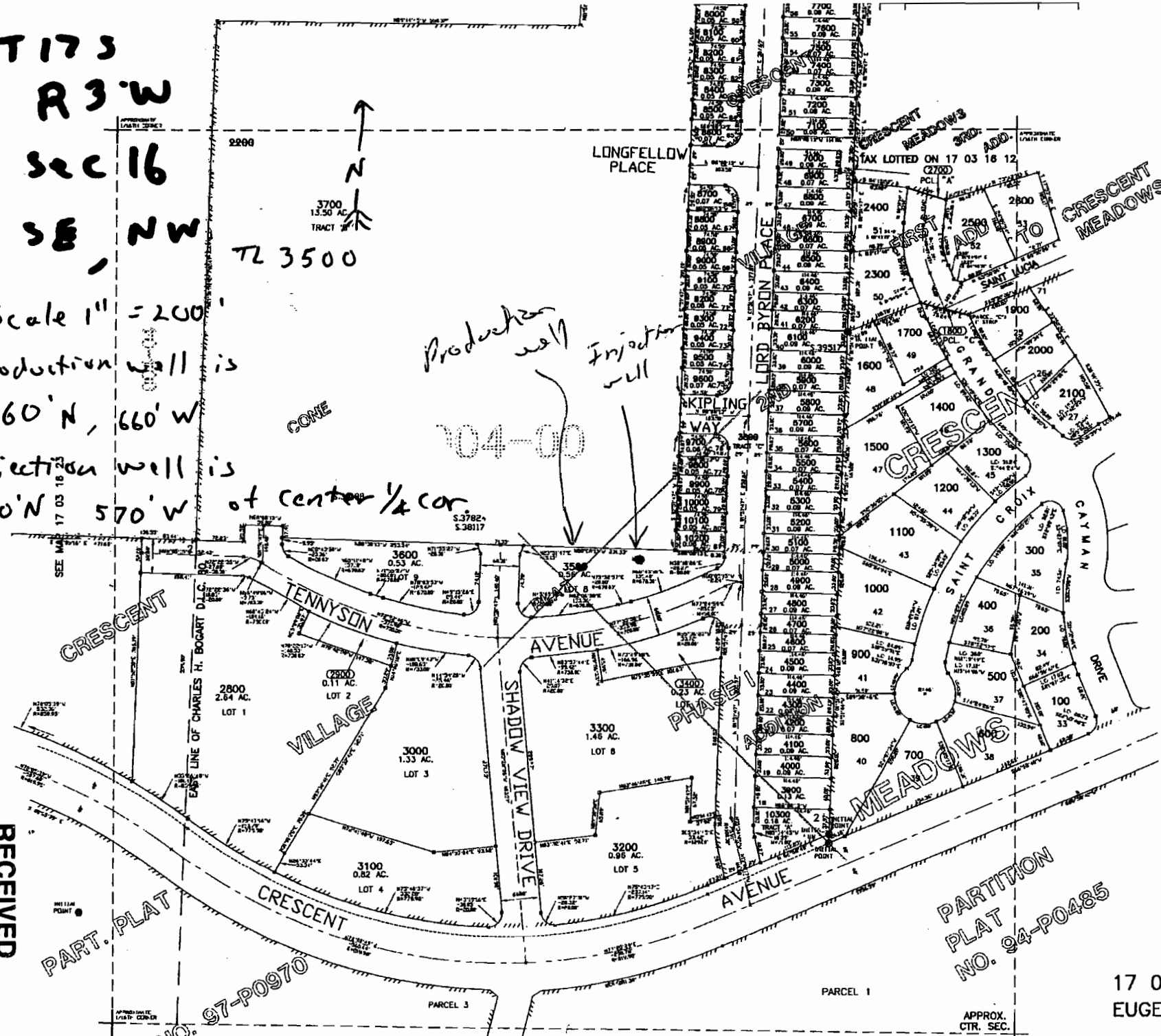


T17S
R3W
SEC 16
SE, NW

TL 3500

Scale 1" = 200'
Production well is
760' N, 660' W
Injection well is
770' N, 570' W of center 1/4 cor

Production well
Injection well
704-00



CANCELLED
2200
3800

SEE MAP 17 03 16 13

RECEIVED
OVER THE COUNTER
WATER RESOURCES DEPT
SALEM OREGON
APR 27 2007

RECEIVED

PART. PLAT

NO. 97-P0970

PARTITION
PLAT
NO. 94-P0485

17 03 16 24
EUGENE

SEE MAP 17 03 16 31

appno G-16841