

Dog River Orchards, Hood River County, Hood Basin

1N-10E-1-301

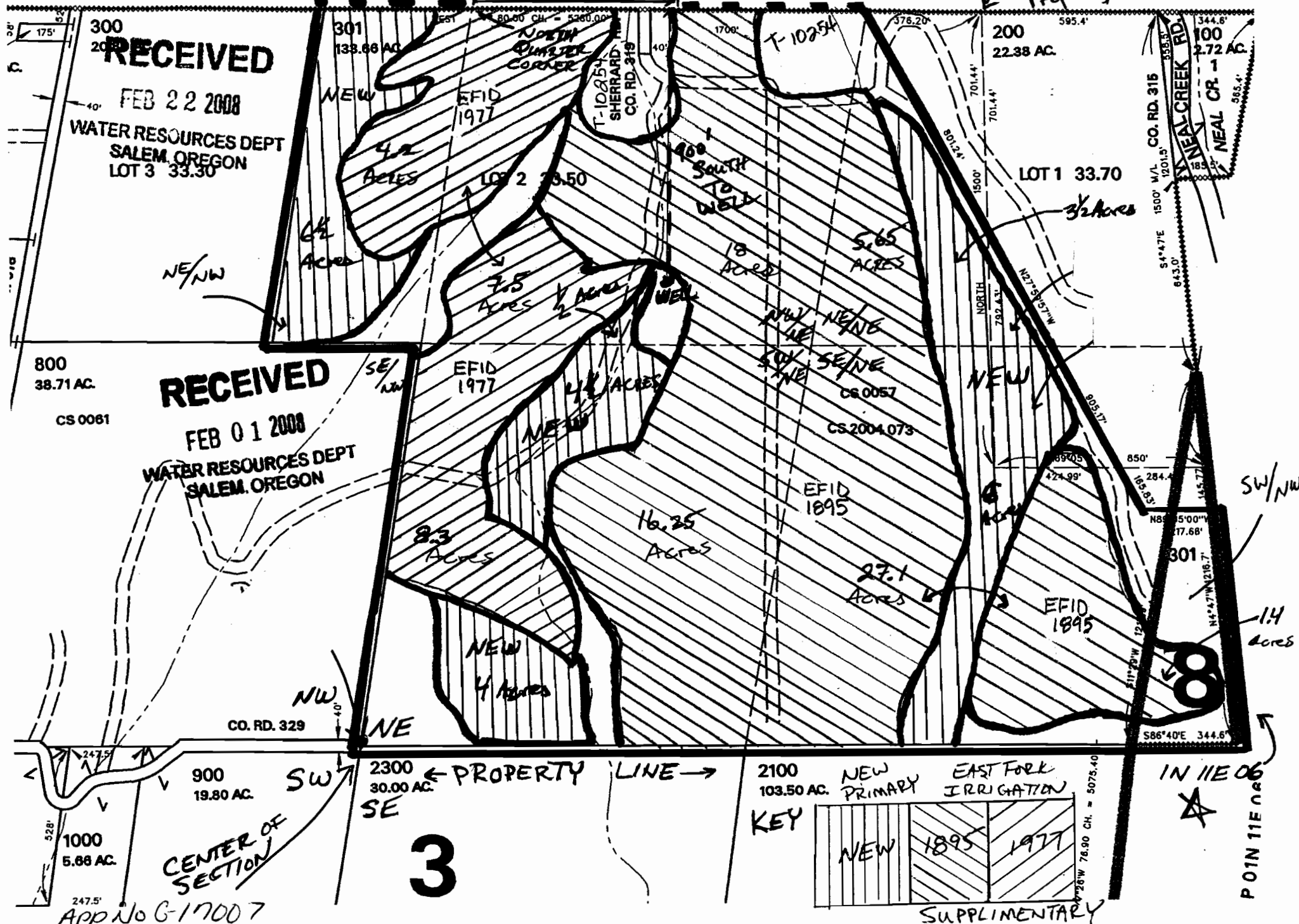
1" = 400'

Well Location = 650' East and 900' South of North Quarter Corner

SEE MAP 02N 10E 36

Former Property Line

36
N



RECEIVED

FEB 22 2008

WATER RESOURCES DEPT
SALEM, OREGON
LOT 3 33.30

RECEIVED

FEB 01 2008

WATER RESOURCES DEPT
SALEM, OREGON

3

8

KEY

NEW	1895	1977
-----	------	------

SUPPLEMENTARY

IN 11E 06

POINT 11E 06

App No G-17007