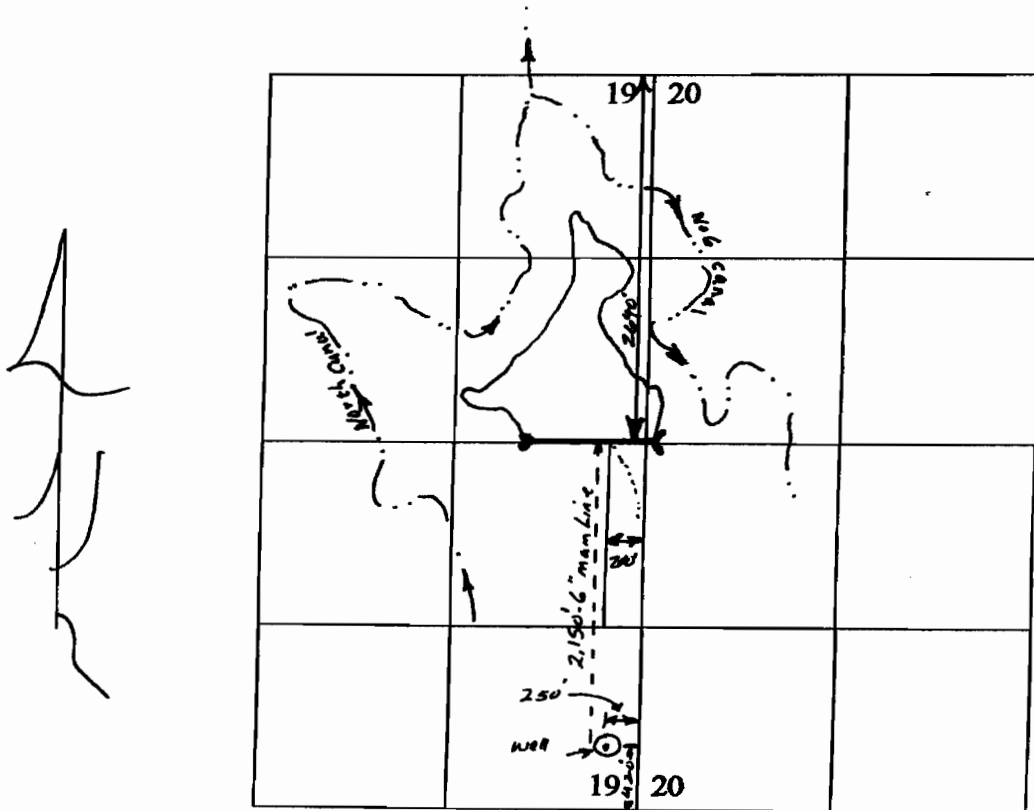


T 39 S, R 19 E, WM

LAKE COUNTY, OREGON

TAX LOT 39-19-7800



Dam 2640' S ; 200' W from the NE corner
Sec 19

SCALE - 1" = 1320'

Well Located 420' N ; 250' W from the
SE CORNER SEC 19, being in the SE 1/4 SE 1/4
SEC 19, T 39 S, R 19 E, Wm.

App No G-17020

RECEIVED
MAR 10 2008
WATER RESOURCES DEPT
SALEM OREGON