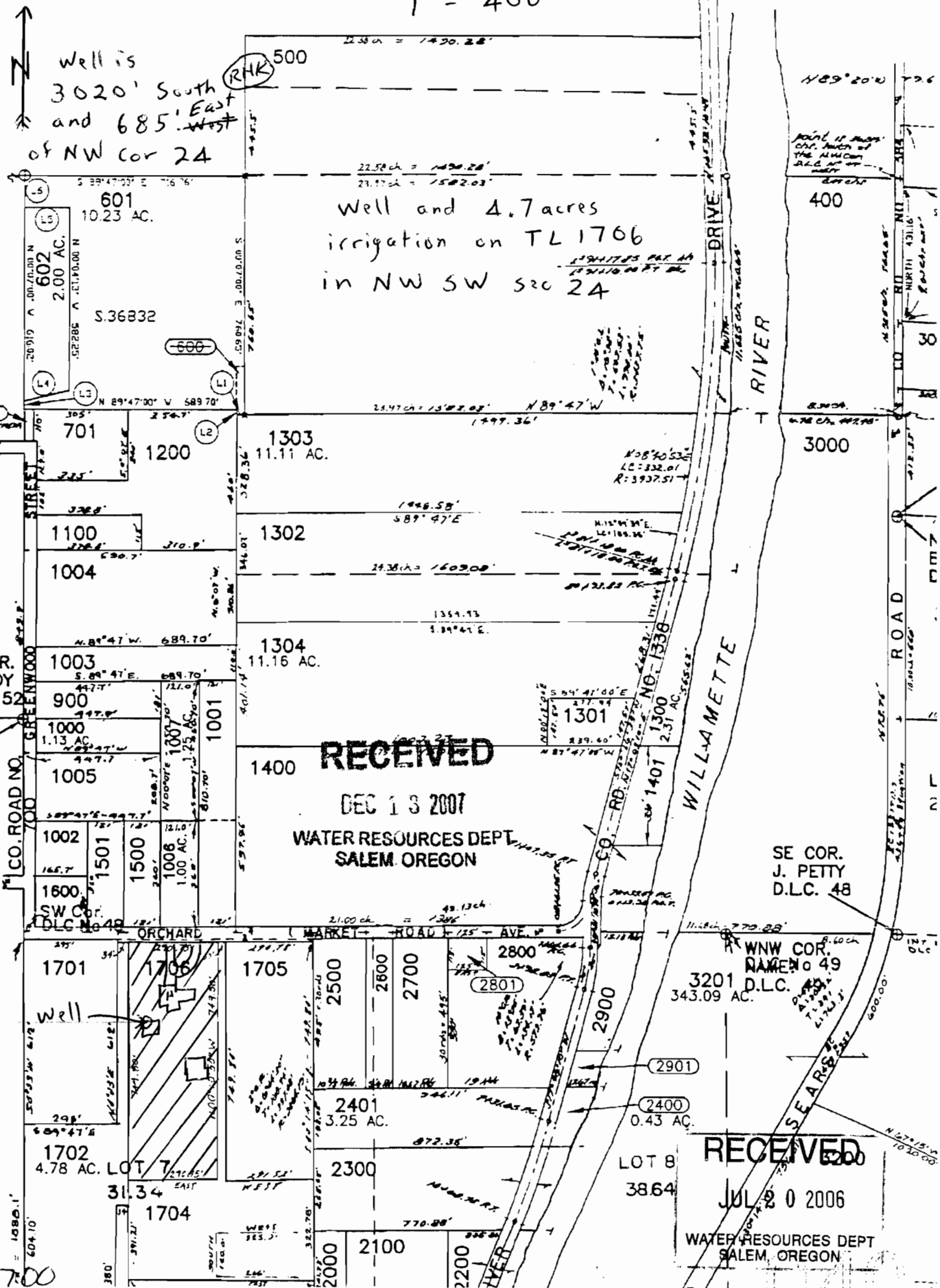


T 19 S R 3 W Sec 24
1" = 400'

ALL MAP 19 U
1/10/19/10



13
24
COR.
BUOY
L.C. 52

NO. 637
800

SE COR.
J. BUOY
D.L.C. 52

E COR.
BUOY
L.C. 51

APPROX.
1/4 COR.

app no
13-16700

Well is
3020' South
and 685' East
of NW cor 24

Well and 4.7 acres
irrigation on TL 1706
in NW SW sec 24

RECEIVED
DEC 13 2007
WATER RESOURCES DEPT
SALEM, OREGON

SE COR.
J. PETTY
D.L.C. 48

WNW COR.
RAGEN # 49
D.L.C. 49
343.09 AC.

RECEIVED

JUL 20 2006

WATER RESOURCES DEPT
SALEM, OREGON

LOT 8
38.64