

THIS MAP WAS PREPARED FOR ASSESSMENT PURPOSES ONLY

300
233.52 AC.

SEC. 11 T. 14S. R. 04W. W.M.
LINN COUNTY, OREGON

1" = 400'

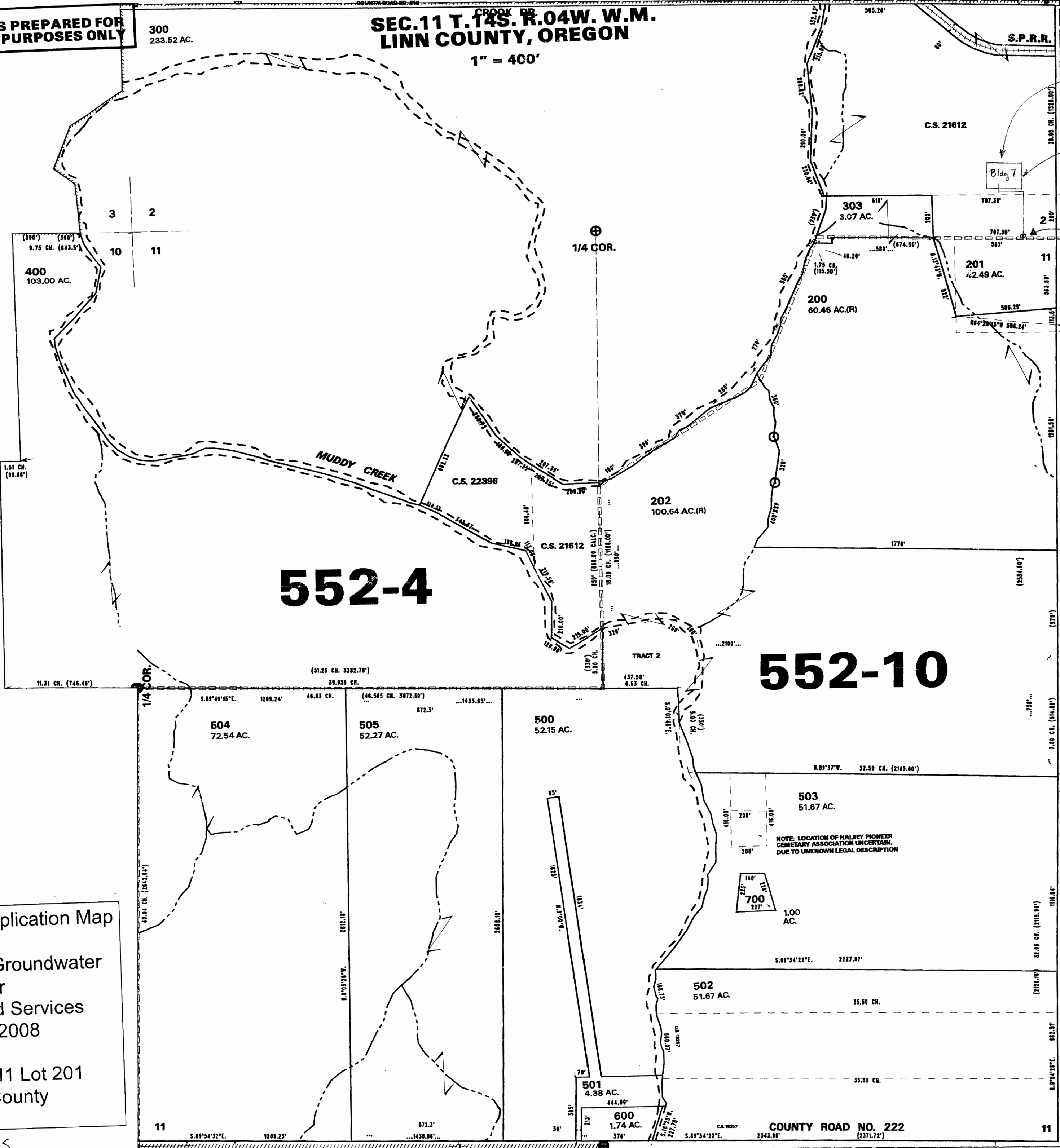
RECEIVED
JUN 2 2008
WATER RESOURCES DEPT.
STATE OF OREGON



Bldg 7 = 4993' East & 250' North of the S.W. Corner of Section 2

Point of Use = piped prox 327' North & 140' West of well to Bldg 7 for seed coating and boiler steam.

Well = 5133' East & 77' South of the N.W. Corner of Section 11



SEE MAP 14 4W 10

552-4

552-10

SEE MAP 14 4W 12

Water Right Application Map to Appropriate Groundwater for Smith Seed Services June 2008
T14S 4W 11 Lot 201 Linn County

App No C 117015

NOTE: LOCATION OF HALSEY PIONEER CEMETARY ASSOCIATION UNCERTAIN, DUE TO UNKNOWN LEGAL DESCRIPTION