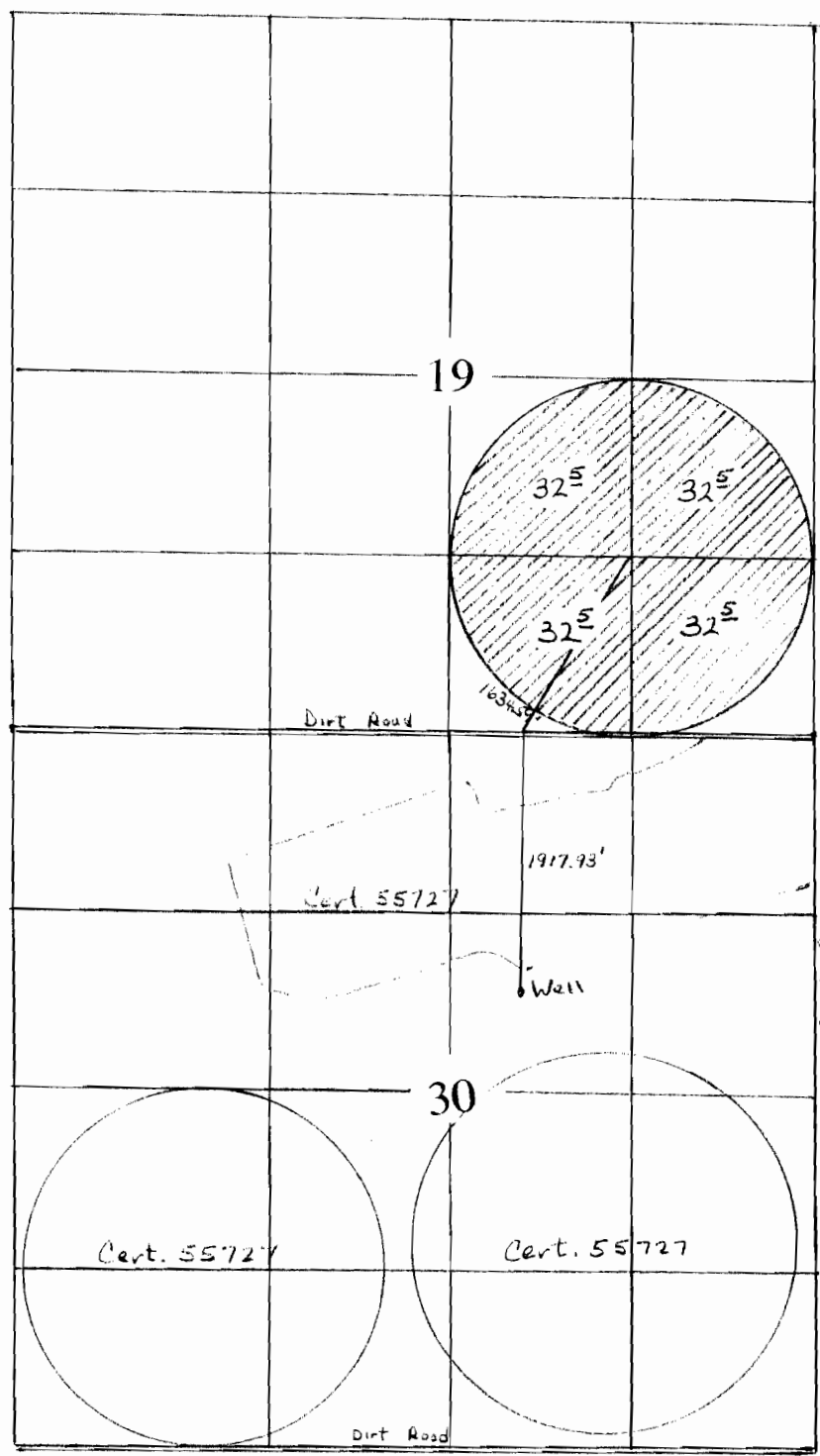


T. 1N., R. 32E. WM



Scale 1" = 1320'



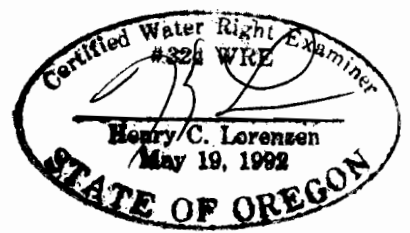
RECEIVED

OCT 14 2008

WATER RESOURCES DEPT.
SALEM, OREGON

WELL LOCATED 1850' SOUTH AND 2150' WEST FROM THE N.E. COR. SEC. 30

J. G. Simpson, Inc.
68732 Mill Rd.



App No G-17122

Pendleton OR 97801