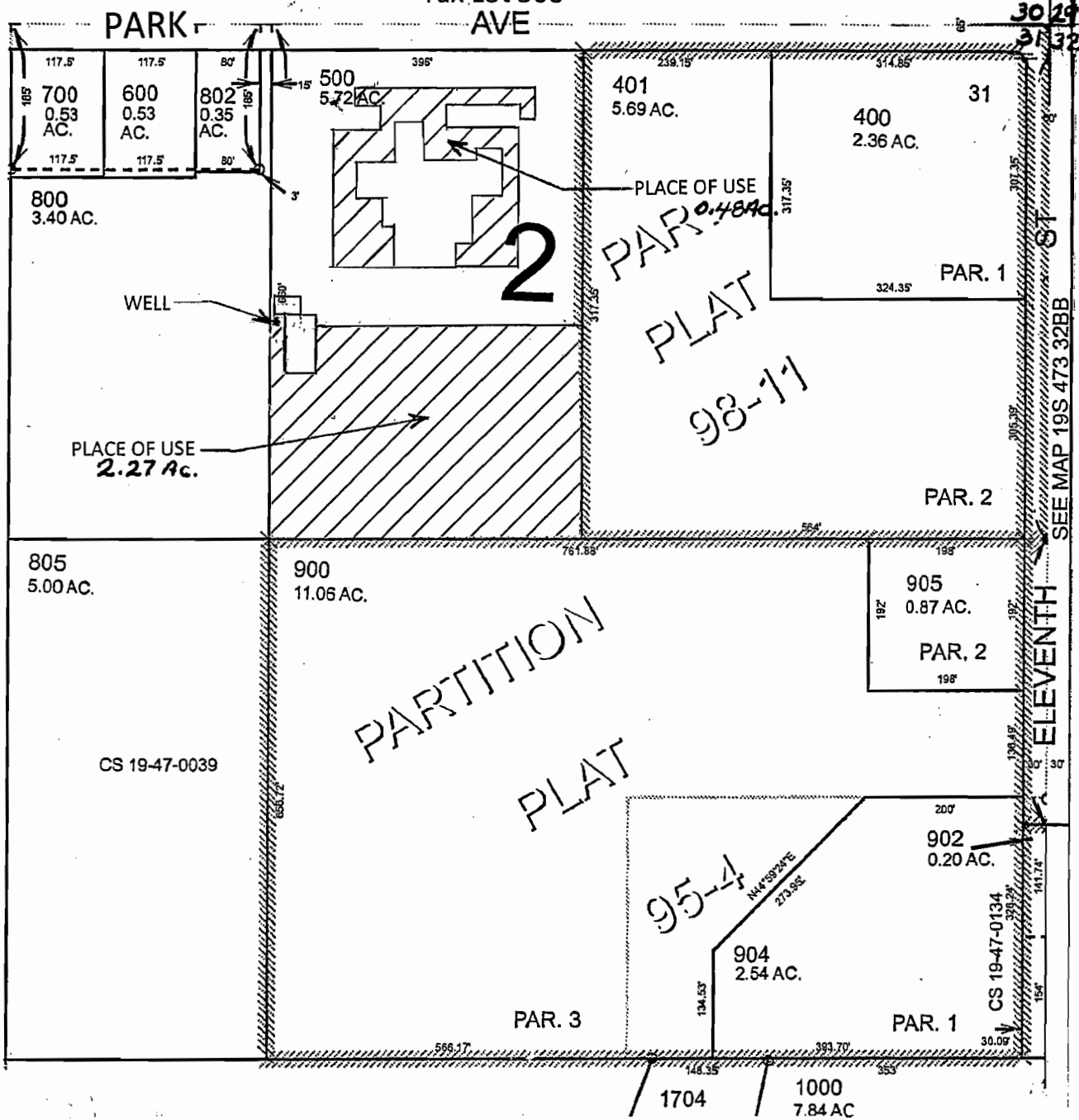


Township 19 South, Range 47 East, W.M.

NE ¼ NE ¼ of Section 31
Malheur County.

Tax Lot 500

G-17170



WATER RIGHT APPLICATION MAP

To
Appropriate Groundwater
In the name of
Corporation of the Presiding Bishop
of
The Church of Jesus Christ
of
Latter Day Saints, a Utah corporation sole

Well Located 375 ft. South
and 983 ft. West From The
NE Corner of Section 31 ✓

PLACE OF USE 

RECEIVED

JAN 26 2009

WATER RESOURCES DEPT
SALEM, OREGON

SCALE 1" = 200'