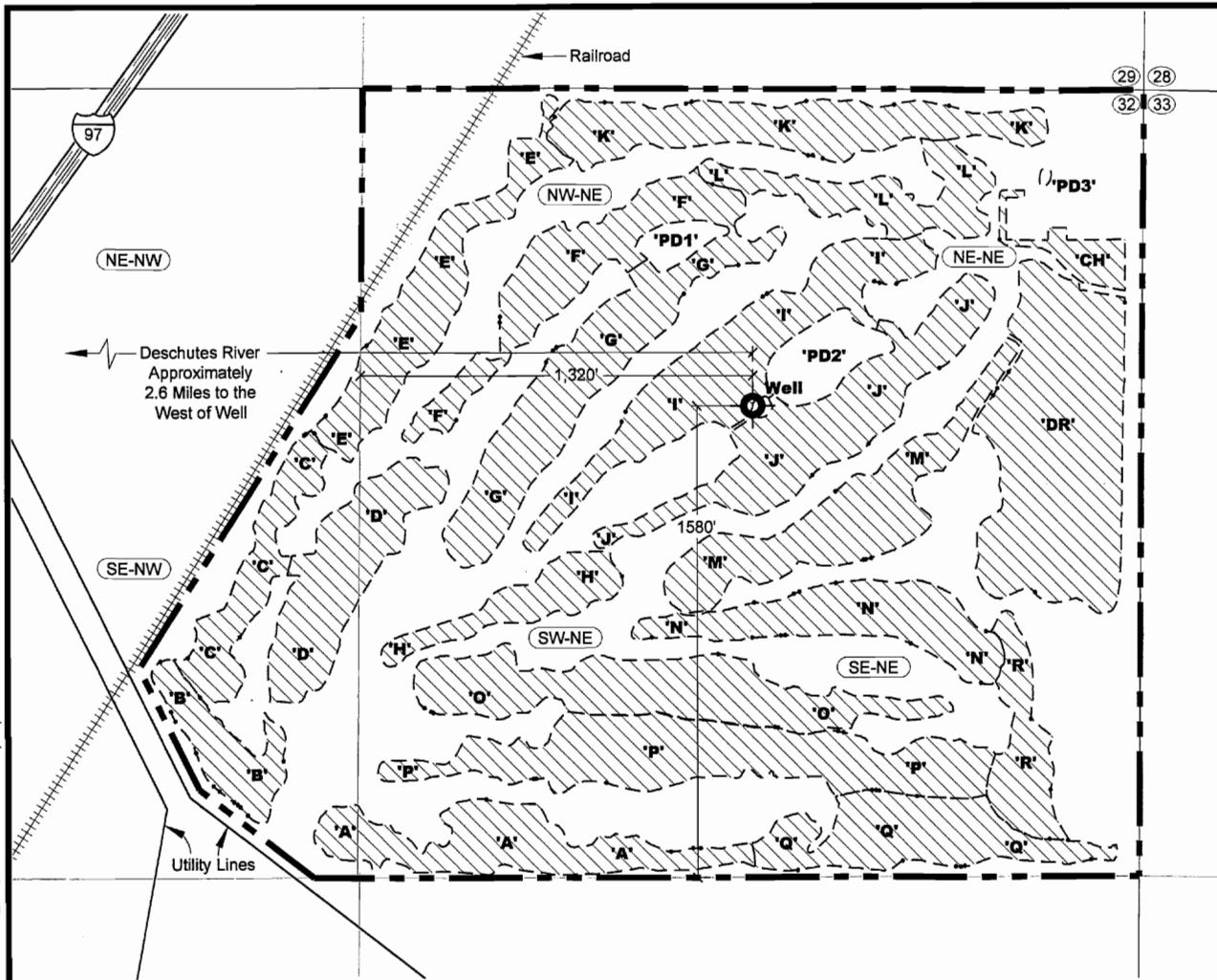


G:\1000\1003\105\Cad\Water\W1003105\_F2\_SitePlan 12:42 11/15/2006 SS

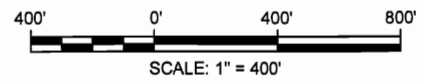


**WATER RIGHT CERTIFICATE**

Place of Use Located in Section 32  
T15S, R13E W.M.  
Deschutes County, Oregon

Assigned ID Lt's	Description	Square Feet	Acres
A	Fairway	197,640.52	4.54
B	Fairway	93,373.76	2.14
C	Fairway	123,237.37	2.83
D	Fairway	198,399.44	4.55
E	Fairway	189,530.73	4.28
F	Fairway	187,591.47	4.27
G	Fairway	263,577.21	6.05
H	Fairway	93,602.11	2.15
I	Fairway	274,261.09	6.30
J	Fairway	257,794.28	5.92
K	Fairway	242,260.88	5.56
L	Fairway	132,818.99	3.05
M	Fairway	226,664.67	5.20
N	Fairway	185,810.13	4.27
O	Fairway	278,073.88	6.38
P	Fairway	337,829.44	7.76
Q	Fairway	195,866.49	4.50
R	Fairway	101,901.68	2.34
		3,600,233.60	82.66
CH	Club House	44,908.34	1.03
DR	Driving Range / Putt	457,857.97	10.51
		4,102,799.92	94.19
PD1 NW-NE	Pond	24,553.12	0.56
PD2 NE-NE	Pond	77,183.20	1.77
PD3 NE-NE	Pond	1,866.80	0.04
		103,603.12	2.38
		Total >>>	96.57

Irrigated Acres	Per Qtr-Qtr	Qtr-Qtr	Square Feet	Acres
NE-NW	48,865.32			1.12
NW-NE	859,570.33			19.73
NE-NE	949,102.84			21.79
SE-NW	349,190.97			8.02
SW-NE	925,952.79			21.26
SE-NE	970,317.67			22.28
		4,102,799.92		94.19



**NOTES**

1. THIS MAP WAS PREPARED FOR THE PURPOSE OF IDENTIFYING THE LOCATION OF WATER RIGHTS ONLY AND IS NOT INTENDED TO PROVIDE LEGAL DIMENSIONS OR LOCATIONS OF PROPERTY OWNERSHIP LINES.

**EXPLANATION**

- Site Boundary
- Irrigated Area
- Well  
Approximate Location of Well - On the Line Between NE1/4 NE1/4 and NW1/4 NE1/4 Section 32, Township 15 South, Range 13 East, W.M., 1,320 Feet East and 1,580 North of Center of Section 32. Latitude 44 Degrees, 13 Minutes, 48.5575 Seconds, Longitude 121 Degrees, 11 Minutes, 38.8375 Seconds.

DAVID J. NEWTON  
 JAN. 16, 1999  
 STATE OF OREGON

RECEIVED  
NOV 20 2006  
WATER RESOURCES DEPT  
SALEM, OREGON

Irrigation Areas  
Juniper Golf Club  
Redmond, Oregon

PROJECT NO. 1003-105

DATE: Nov 2006

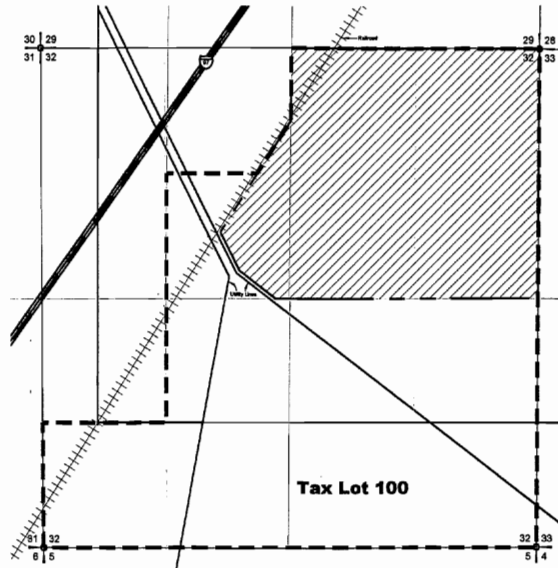
DRAWN BY: S. Schenck

DESIGNED BY: J. Newton

FIGURE 2


**NEWTON CONSULTANTS INC.**  
 Earth, Water and Rock Specialists  
 PH: 541-504-9960

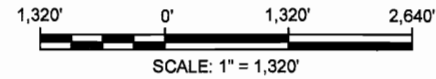
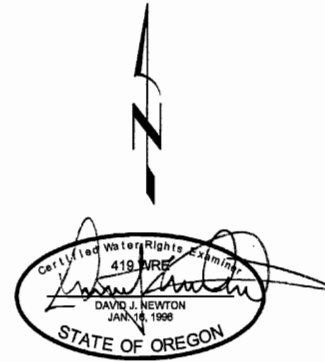
appno G-16749



**TAX LOT MAP**  
 Place of Use Located in Section 32  
 T15S, R13E W.M.  
 Deschutes County, Oregon

**EXPLANATION**

-  Site Boundary
-  Tax Lot Boundary



**NOTES**

1. THIS MAP WAS PREPARED FOR THE PURPOSE OF IDENTIFYING THE LOCATION OF WATER RIGHTS ONLY AND IS NOT INTENDED TO PROVIDE LEGAL DIMENSIONS OR LOCATIONS OF PROPERTY OWNERSHIP LINES.

**RECEIVED**  
 NOV 20 2006  
 WATER RESOURCES DEPT  
 SALEM, OREGON

**Tax Lot Map**  
 Juniper Golf Club  
 Redmond, Oregon



**NEWTON**  
 CONSULTANTS INC.  
 Earth, Water and Rock Specialists  
 P.O. Box 541 504-5569

DESIGNED BY:  
 J. Newton

DRAWN BY:  
 S. Schenck

DATE:  
 Nov 2006

PROJECT NO.  
 1003-105

FIGURE  
 3

app no G-16749