



Scale 1"=1320'

APPLICATION MAP FOR GROUND  
WATER RIGHTS  
Spin & Marty LLC  
Located in T 1 S., Range 30 E.  
Sections 16 & 17 Taxlot 1100

Section 16  
NW/SW 12.4 Ac.  
SW/SW 19.0 Ac.

Section 17  
NE/SE 28.9 Ac.  
NW/SE 27.2 Ac.  
SE/NE 2.3 Ac.  
SW/NE 18.4 Ac.  
SE/NW 37.0 Ac.  
NE/SW 12.4 Ac.  
160.0 Ac.

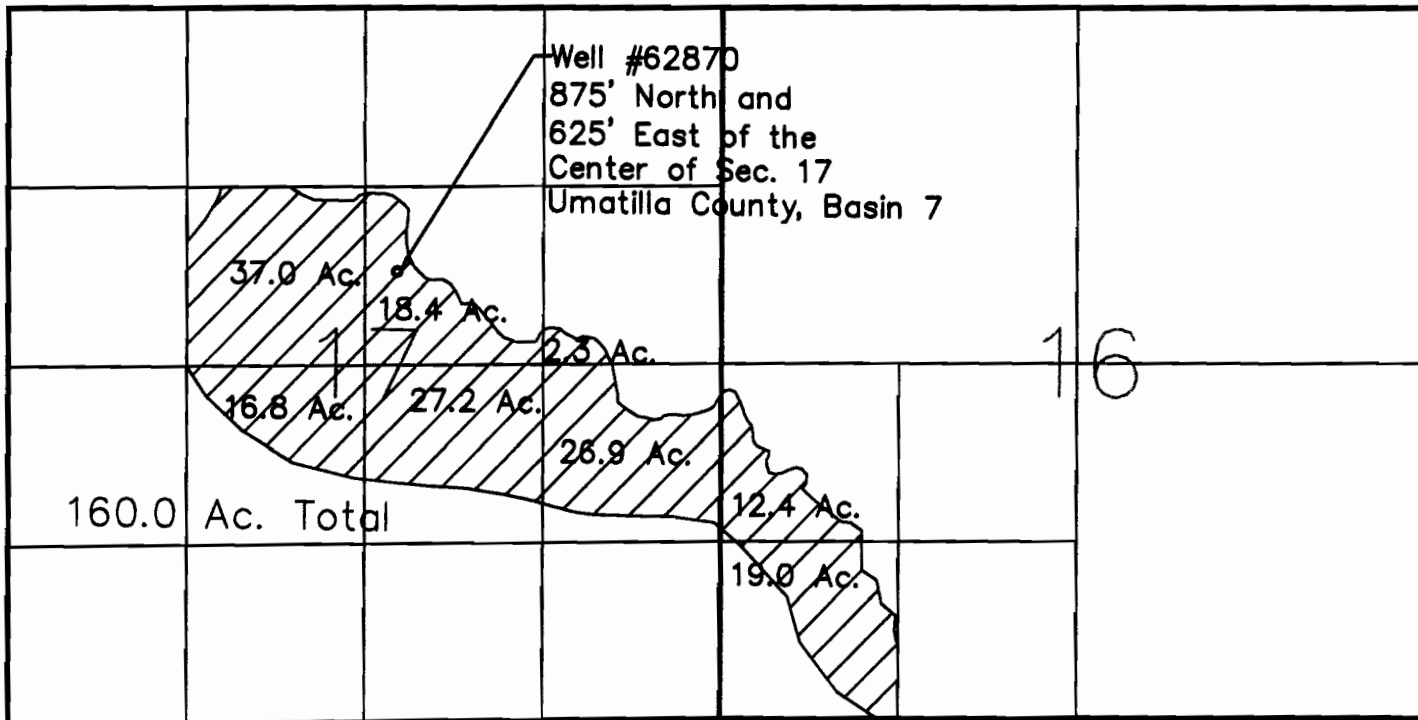
**RECEIVED**

JUN 20 2008

WATER RESOURCES DEPT  
SALEM, OREGON

Application G-16092

Permit G-15724



App No G-17070