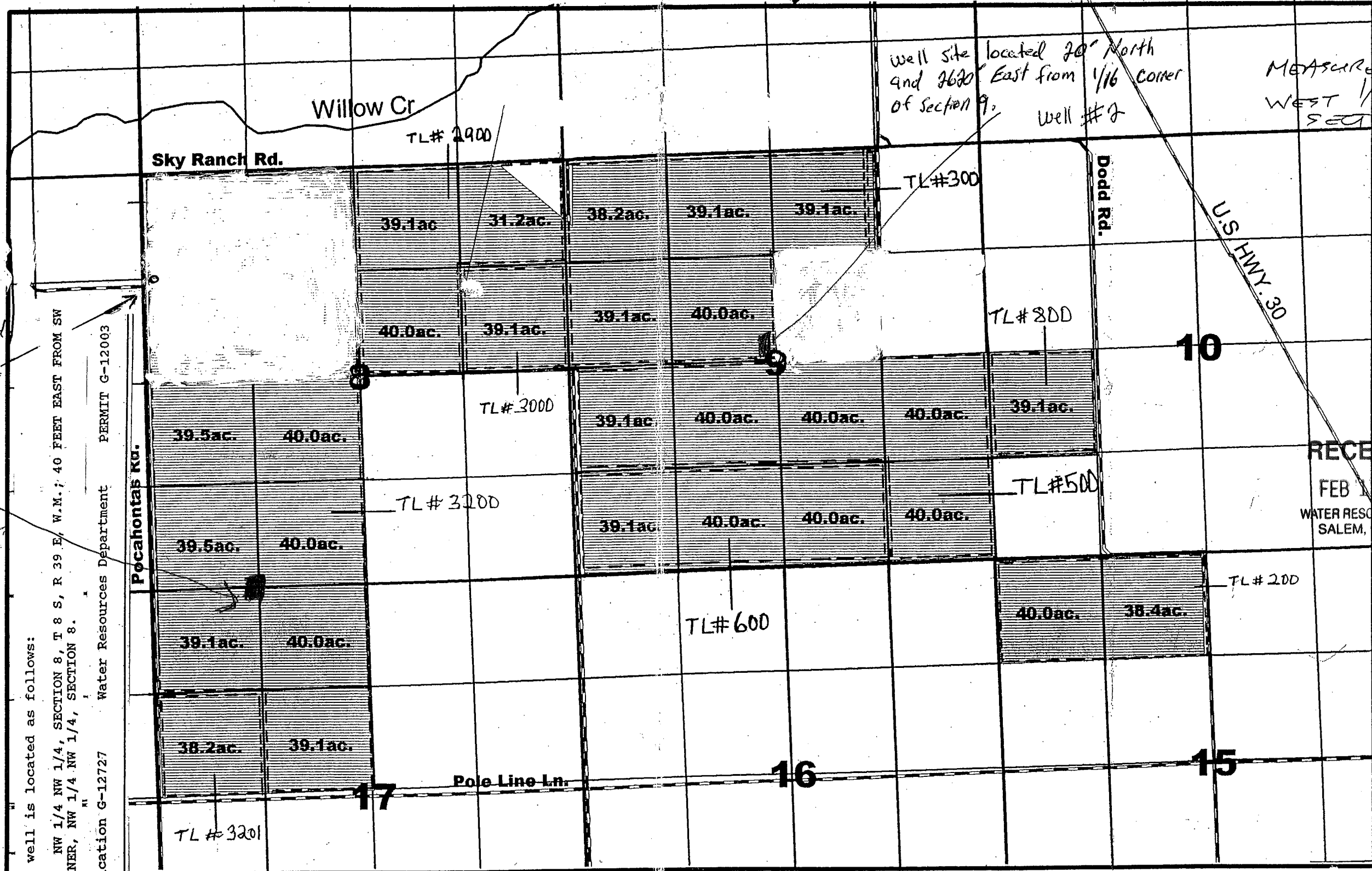


WORK COPY

T. 8 S. R. 39 E., W.M.



Well site located 20' North and 2630' East from 1/16 Corner of Section 9. Well #2

MEASURED from WEST 1/4 CORNER SECTION 9

Well Sight Located 40' East from SW Corner, NW 1/4, NW 1/4 Section 8
Well #1
Well #1A
1320' E of NW Corner Section 17 Dec Feb 11

The well is located as follows:
NW 1/4 NW 1/4, SECTION 8, T 8 S, R 39 E, W.M.; 40 FEET EAST FROM SW CORNER, NW 1/4 NW 1/4, SECTION 8.
Application G-12727
Water Resources Department
PERMIT G-12003

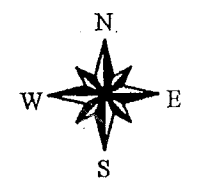
RECEIVED
FEB 11 2008
WATER RESOURCES DEPT
SALEM, OREGON

RECEIVED
JAN 03 2006
WATER RESOURCES DEPT
SALEM, OREGON

MAP TO ACCOMPANY APPLICATION FOR GROUND WATER

Applicants: Brad & June Allen
December,

Supplemental Irrigation From Well



1" = 1320'

app no G-16594