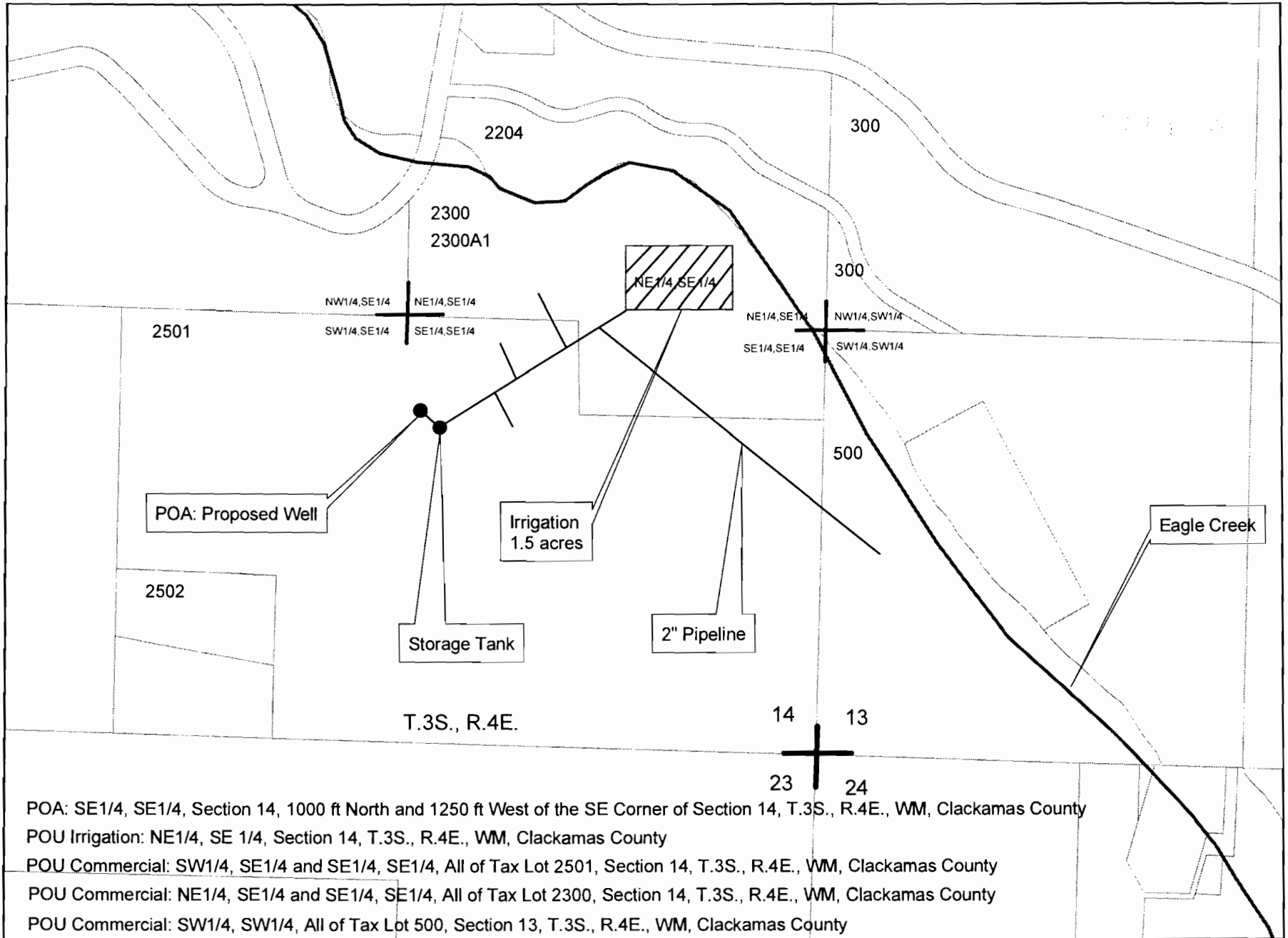


Application Map for a Groundwater Permit  
for Eagle Fern Camp



POA: SE1/4, SE1/4, Section 14, 1000 ft North and 1250 ft West of the SE Corner of Section 14, T.3S., R.4E., WM, Clackamas County  
 POU Irrigation: NE1/4, SE 1/4, Section 14, T.3S., R.4E., WM, Clackamas County  
 POU Commercial: SW1/4, SE1/4 and SE1/4, SE1/4, All of Tax Lot 2501, Section 14, T.3S., R.4E., WM, Clackamas County  
 POU Commercial: NE1/4, SE1/4 and SE1/4, SE1/4, All of Tax Lot 2300, Section 14, T.3S., R.4E., WM, Clackamas County  
 POU Commercial: SW1/4, SW1/4, All of Tax Lot 500, Section 13, T.3S., R.4E., WM, Clackamas County

0 100 200 400 600 800 Feet  
 1 inch equals 400 feet

Application G-17141