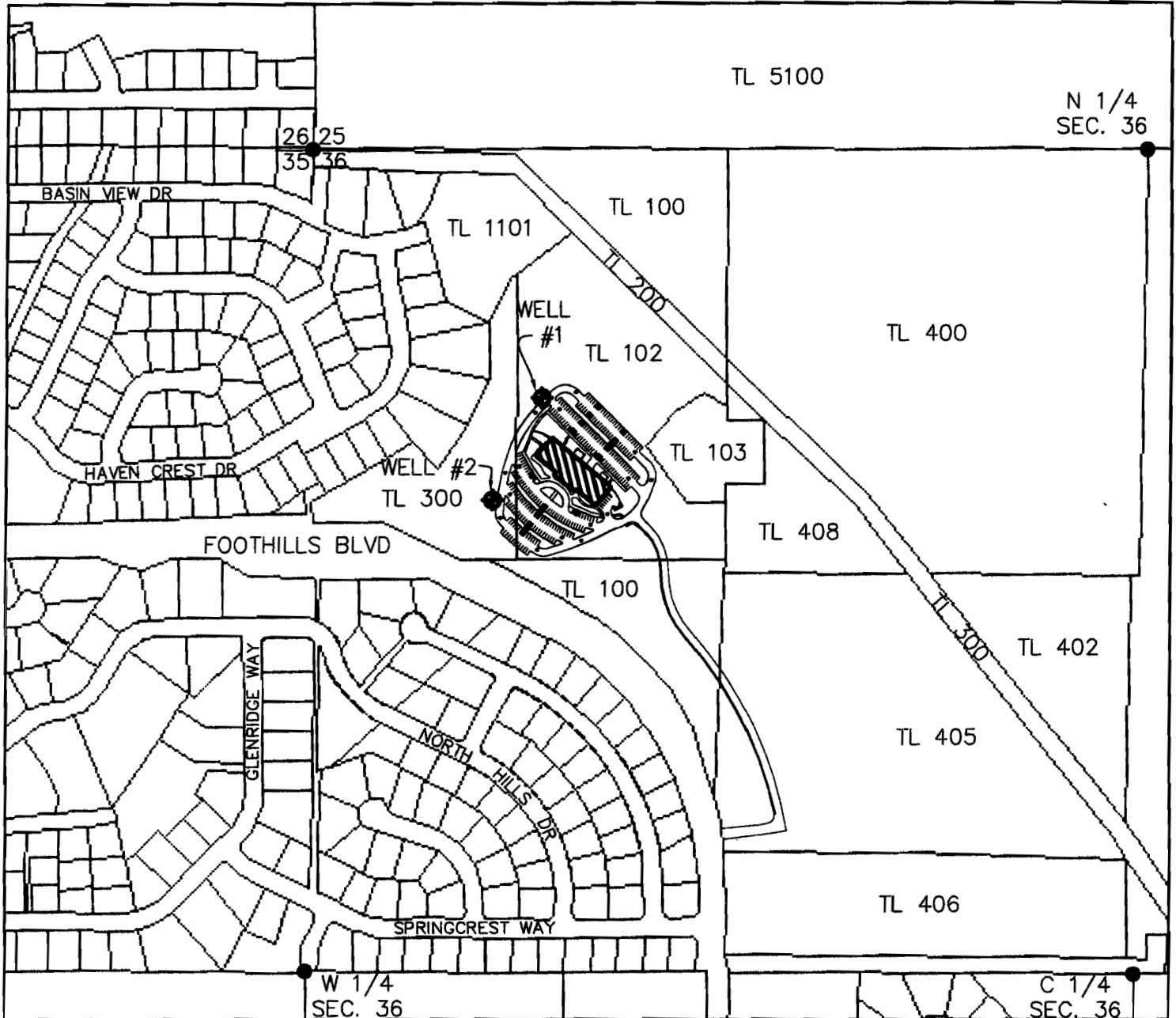


TOWNSHIP 38S, RANGE 9E., W.M.  
 NW 1/4 NW 1/4 SECTION 36  
 KLAMATH COUNTY  
 TL 102 & TL 300



MAP TO ACCOMPANY WATER RIGHT APPLICATION  
 FOR: INTERNATIONAL CHURCH OF THE FOURSQUARE.  
 OCTOBER 2007

 AREA OF USEAGE  
 (BUILDING)

WELL #1: (KLAM 56417)  
 LOCATED 820 ft SOUTH AND 760 ft  
 EAST OF THE NW CORNER OF SECTION 36.

LAT. =  $42^{\circ}13'34.503''$  N  
 LON. =  $121^{\circ}42'54.898''$  W (NAD83)

WELL #2: (KLAM 56340)  
 LOCATED 1160 ft SOUTH AND 600 ft  
 EAST OF THE NW CORNER OF SECTION 36.

LAT. =  $42^{\circ}13'31.092''$  N  
 LON. =  $121^{\circ}42'57.050''$  W (NAD83)



SCALE 1"=500'

App No G-17052