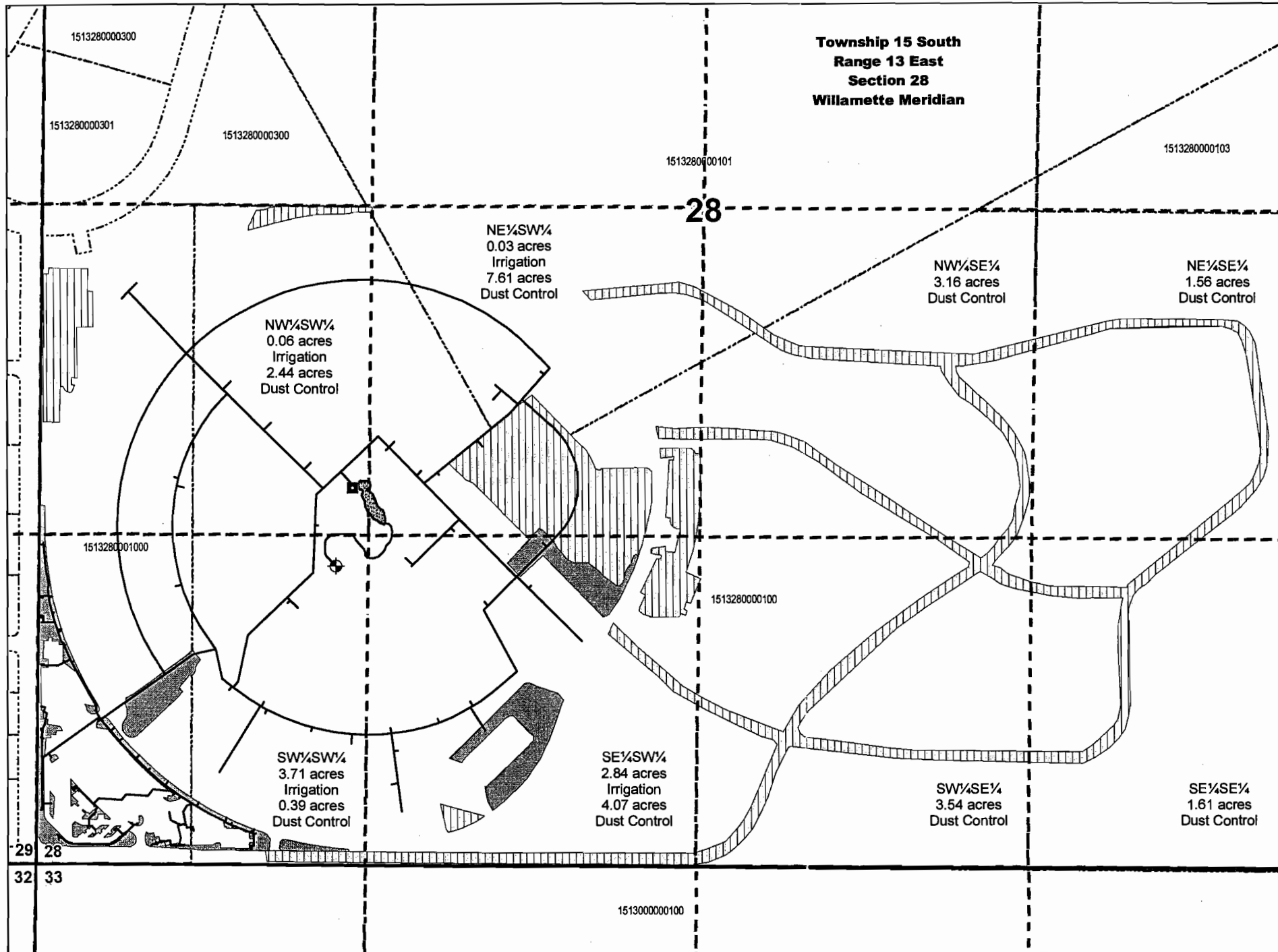
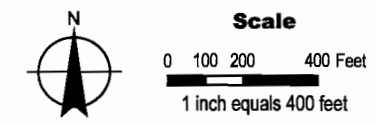


**Deschutes County Fairgrounds & Expo Center
Application for a Permit to use Ground Water**



- Legend**
- Irrigation
 - Dust Control
 - Well 1
 - Pumps (from In-line Pond)
 - Water Conveyance Mains
 - In-line Storage Pond
 - Tax Lots



POA Legal Description
POA Located 1190 ft north and 1190 ft east from the southwest corner of Section 28, Township 15 South, Range 13 East (W.M.)

This map was prepared for the purpose of identifying the location of a water right only and it is not intended to provide legal dimensions or location of property ownership lines.

Map Projection: Oregon Lambert Conformal Conic
Map Datum: North American Datum 1983
Map Date: September 22, 2006
Prepared by: Groundwater Solutions, Inc.

Data Source: Spatial data sets digitized from maps provided by Deschutes County Fairgrounds and Expo Center. Taxlots provided by Deschutes County.

P:\197 - Deschutes County\001-Fairground and Industrial\Project_GIS\Project_mxd\NewFairgrounds_GWapp.mxd

RECEIVED

FEB 06 2007

WATER RESOURCES DEPT
SALEM, OREGON

App no G-16791