

SE 1/4 SEC 2 T 36S R 1W W.M.

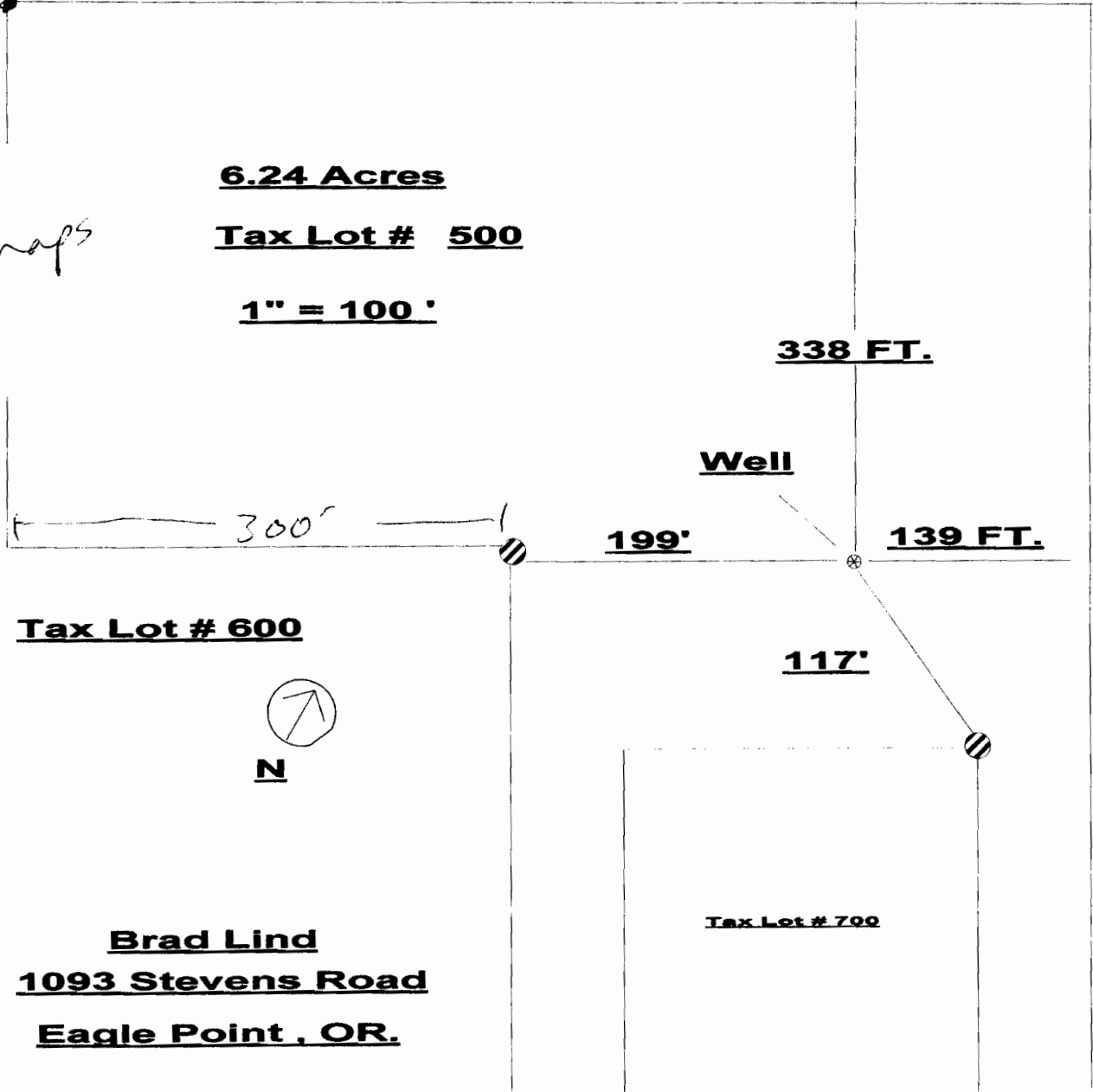
Center 1/4 corner

3 maps

6.24 Acres

Tax Lot # 500

1" = 100'



Tax Lot # 600



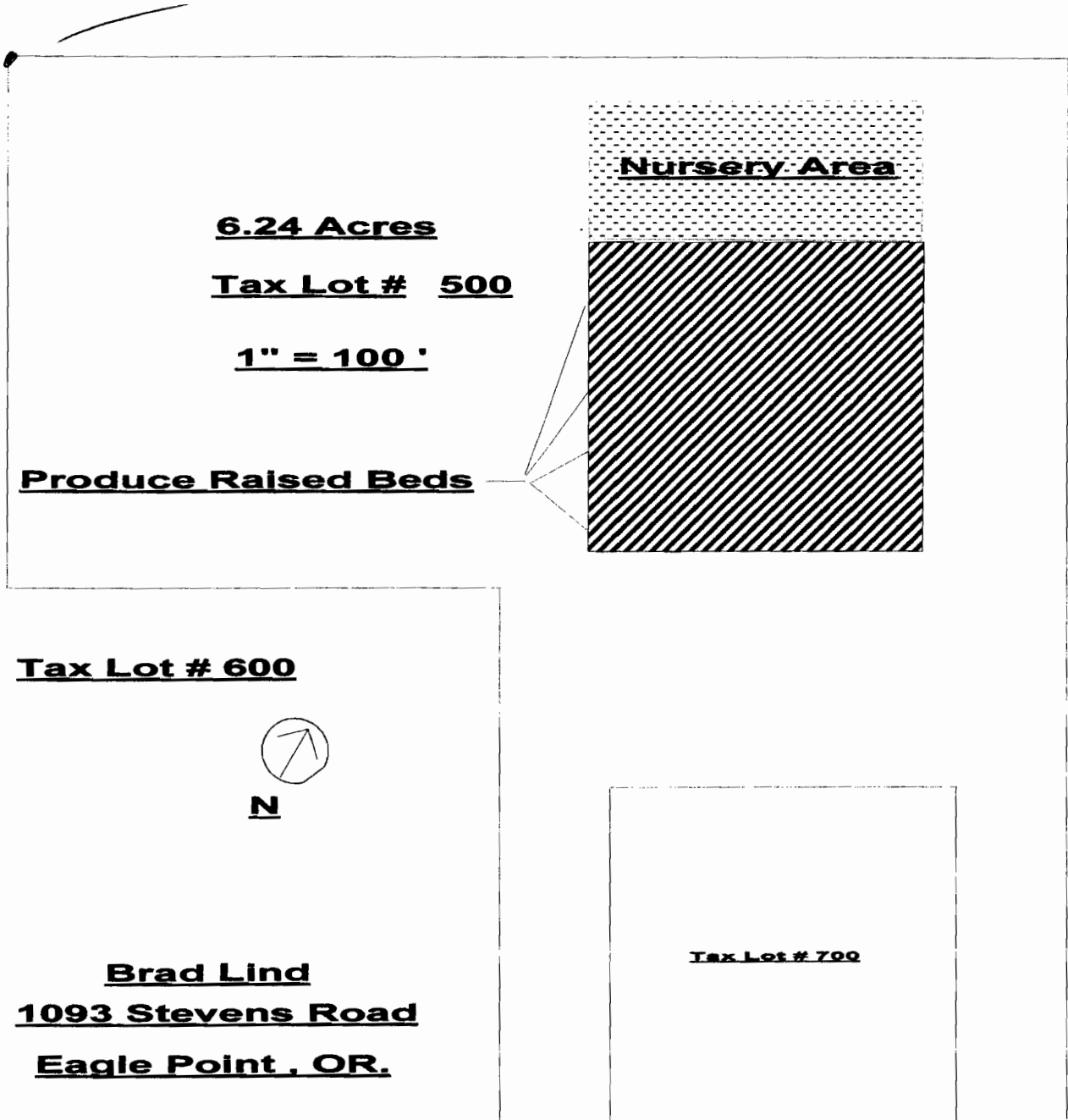
Brad Lind
1093 Stevens Road
Eagle Point, OR.

Tax Lot # 700

Well is 338'S & 499'E

From Center 1/4 corner section 2

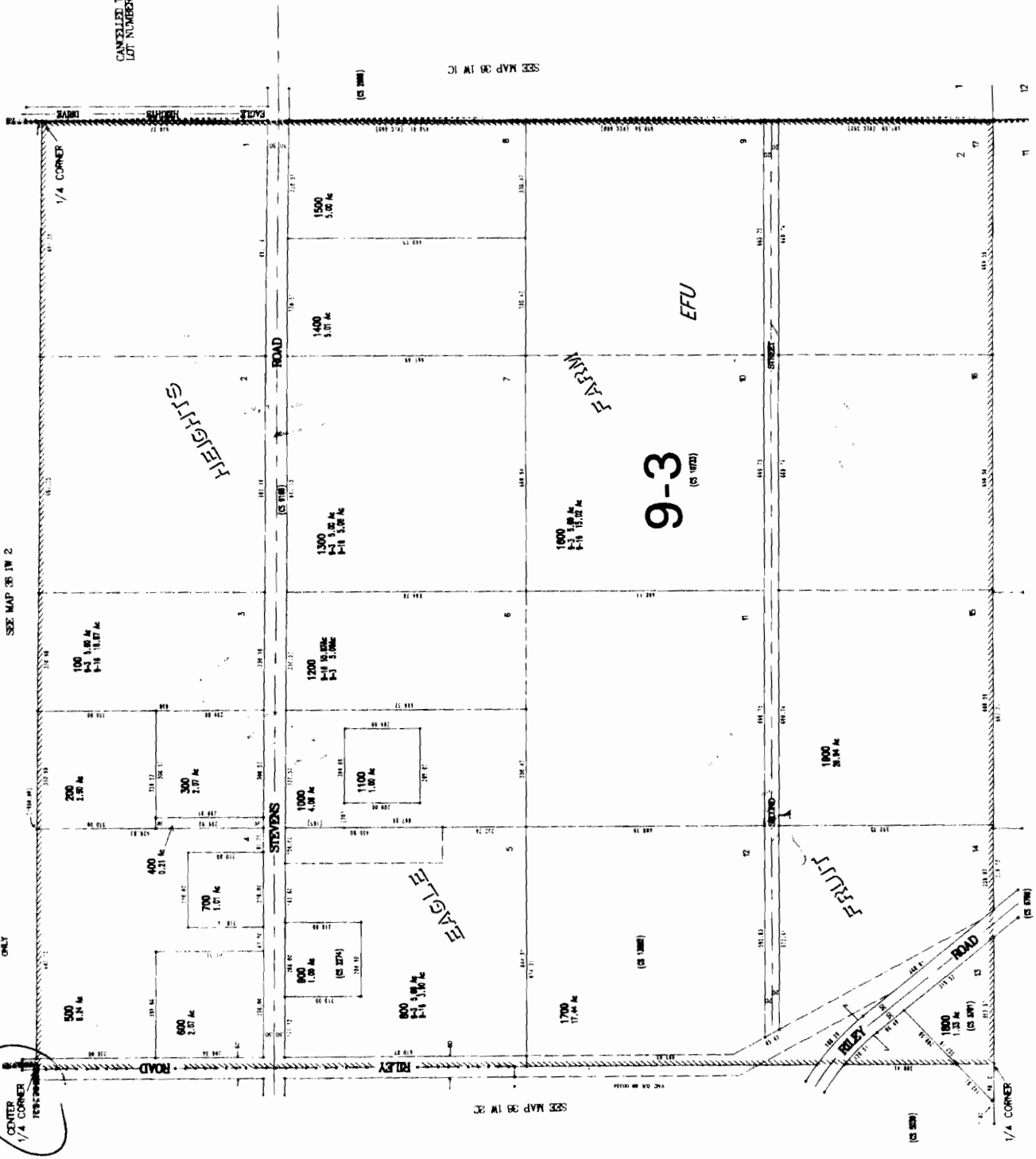
SE 1/4 Sec 2 T36S R1W Wm



SE 1/4 SEC 2 T36S R1W. W.M.
JACKSON COUNTY

SCALE 1 INCH = 200 FEET
SEE MAP 36 1W 2

IMPORTANT
THIS MAP FOR ASSESSMENT
AND TAXATION PURPOSES
ONLY



G-7769

SEE MAP 36 1W 1I

RECEIVED

JAN 14 2009

WATER RESOURCES DEPT
SALEM, OREGON

MEFATLE K/MAP/361W/02/D/00 PLATGRA
CREATED WEDNESDAY SEPTEMBER 27, 2000 9:13 AM BY LUNDBERL