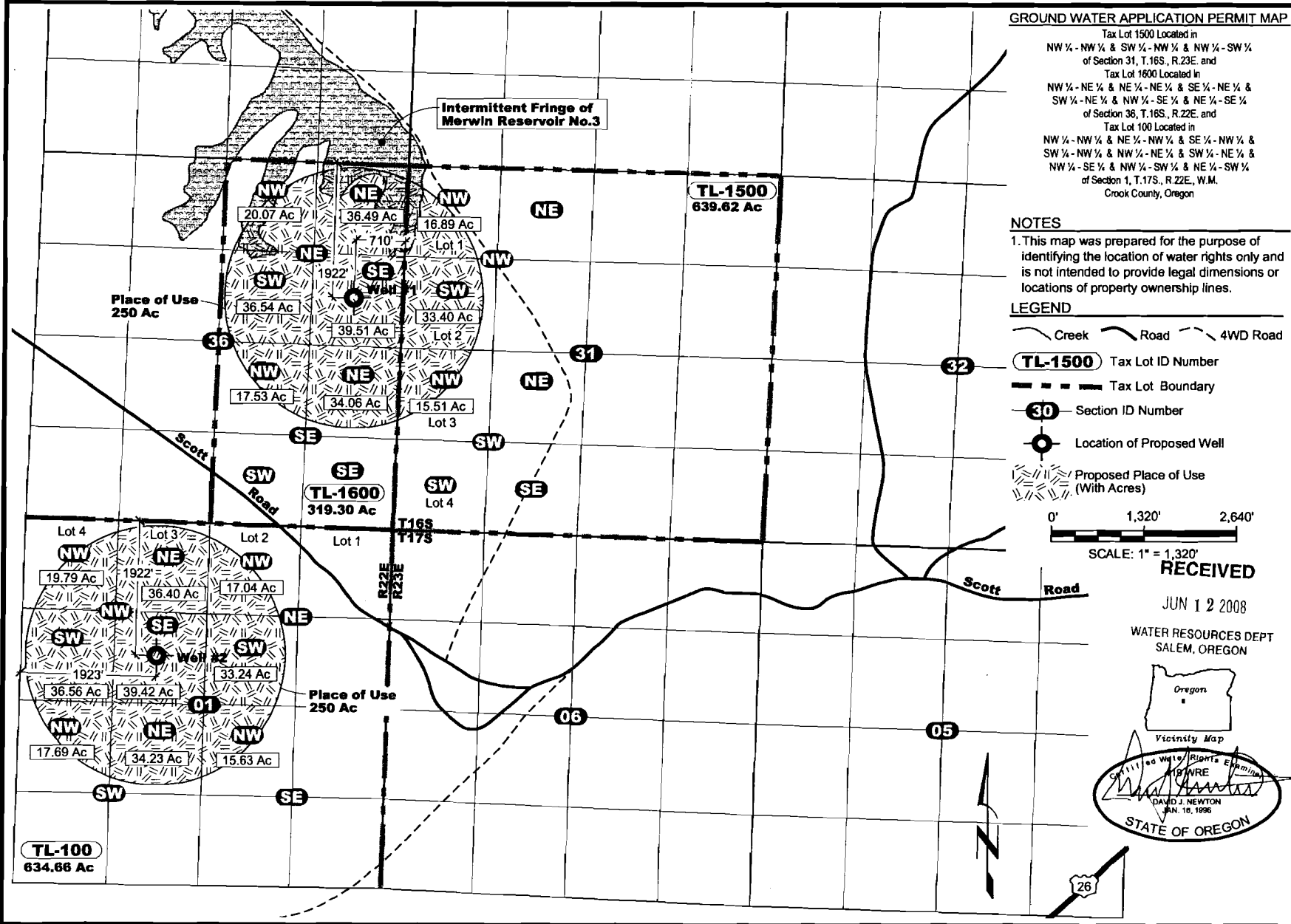


G:\1000\1050\107\Cad\Water\W1050107\_F1\_WtrRightMap 11:13 06/05/2008 SS



**GROUND WATER APPLICATION PERMIT MAP**

Tax Lot 1500 Located in  
 NW 1/4 - NW 1/4 & SW 1/4 - NW 1/4 & NW 1/4 - SW 1/4  
 of Section 31, T.16S, R.23E. and  
 Tax Lot 1600 Located in  
 NW 1/4 - NE 1/4 & NE 1/4 - NE 1/4 & SE 1/4 - NE 1/4 &  
 SW 1/4 - NE 1/4 & NW 1/4 - SE 1/4 & NE 1/4 - SE 1/4  
 of Section 36, T.16S, R.22E. and  
 Tax Lot 100 Located in  
 NW 1/4 - NW 1/4 & NE 1/4 - NW 1/4 & SE 1/4 - NW 1/4 &  
 SW 1/4 - NW 1/4 & NW 1/4 - NE 1/4 & SW 1/4 - NE 1/4 &  
 NW 1/4 - SE 1/4 & NW 1/4 - SW 1/4 & NE 1/4 - SW 1/4  
 of Section 1, T.17S, R.22E., W.M.  
 Crook County, Oregon

**NOTES**

1. This map was prepared for the purpose of identifying the location of water rights only and is not intended to provide legal dimensions or locations of property ownership lines.

**LEGEND**

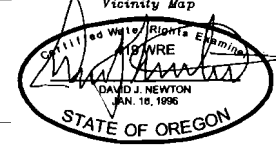
- Creek
- Road
- 4WD Road
- Tax Lot ID Number
- Tax Lot Boundary
- Section ID Number
- Location of Proposed Well
- Proposed Place of Use (With Acres)

0' 1,320' 2,640'  
 SCALE: 1" = 1,320'

**RECEIVED**

JUN 12 2008

WATER RESOURCES DEPT  
 SALEM, OREGON



**Ground Water Permit Application Map**  
 Blue Mountain Ranch  
 Crook County, Oregon



**NEWTON**  
 CONSULTANTS INC.  
 Earth, Water and Rock Specialists  
 Ph: 541 504-8960

DESIGNED BY: K. Turner  
 DRAWN BY: S. Schenck  
 DATE: June 2008  
 PROJECT NO: 1050-107  
 FIGURE 1

APP NO G-17067