

HATCHERY WATER USE SCHEMATIC

RECEIVED

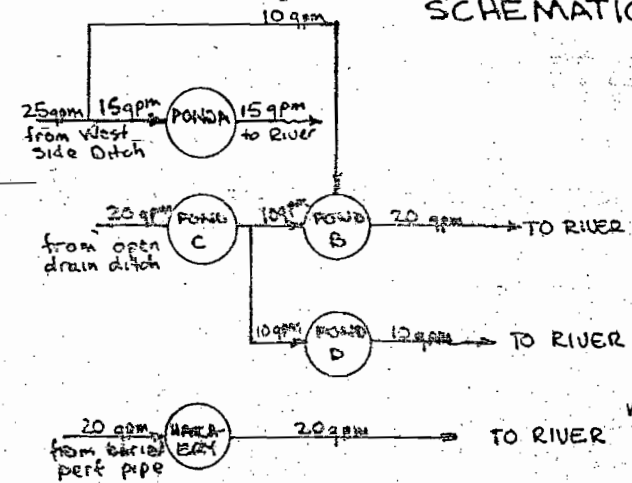
JAN 04 1993

WATER RESOURCES DEPT.
SALEM, OREGON

RECEIVED

FEB - 4 1993

WATER RESOURCES DEPT.
SALEM, OREGON



THE HATCHERY OPERATION NEEDS A TOTAL OF 65 GPM FOR OPERATION AS A NON-CONSUMPTIVE USE. IT IS PROPOSED TO ATTAIN THIS DURING THE IRRIGATION SEASON BY CANCELLING AND TRANSFERRING 6 ACRES OF WATER RIGHT IN THE SE CORNER OF THE PROPERTY FROM IRRIGATION TO HATCHERY USE. THE PROPERTY IS CURRENTLY COVERED WITH WATER RIGHTS FOR IRRIGATION BY CERT # 3180 DATED 1901, FROM THE LOSTINE RIVER, AND CERT # 4930 DATED 1935 SUPPLEMENTAL FROM MINAM LAKE, BOTH DELIVERED BY THE WEST SIDE DITCH. UNDER THIS PROPOSAL 25 GPM WILL BE TAKEN FROM THE LOSTINE RIVER VIA THE WEST SIDE DITCH AND 40 GPM WILL BE TAKEN FROM DITCHES AND PERFORATED PIPES IN THE ALLUVIAL GRAVELS BESIDE THE LOSTINE RIVER. ALL DIVERTED FLOWS, LESS MINOR EVAPORATION LOSSES WILL BE RETURNED TO THE RIVER.

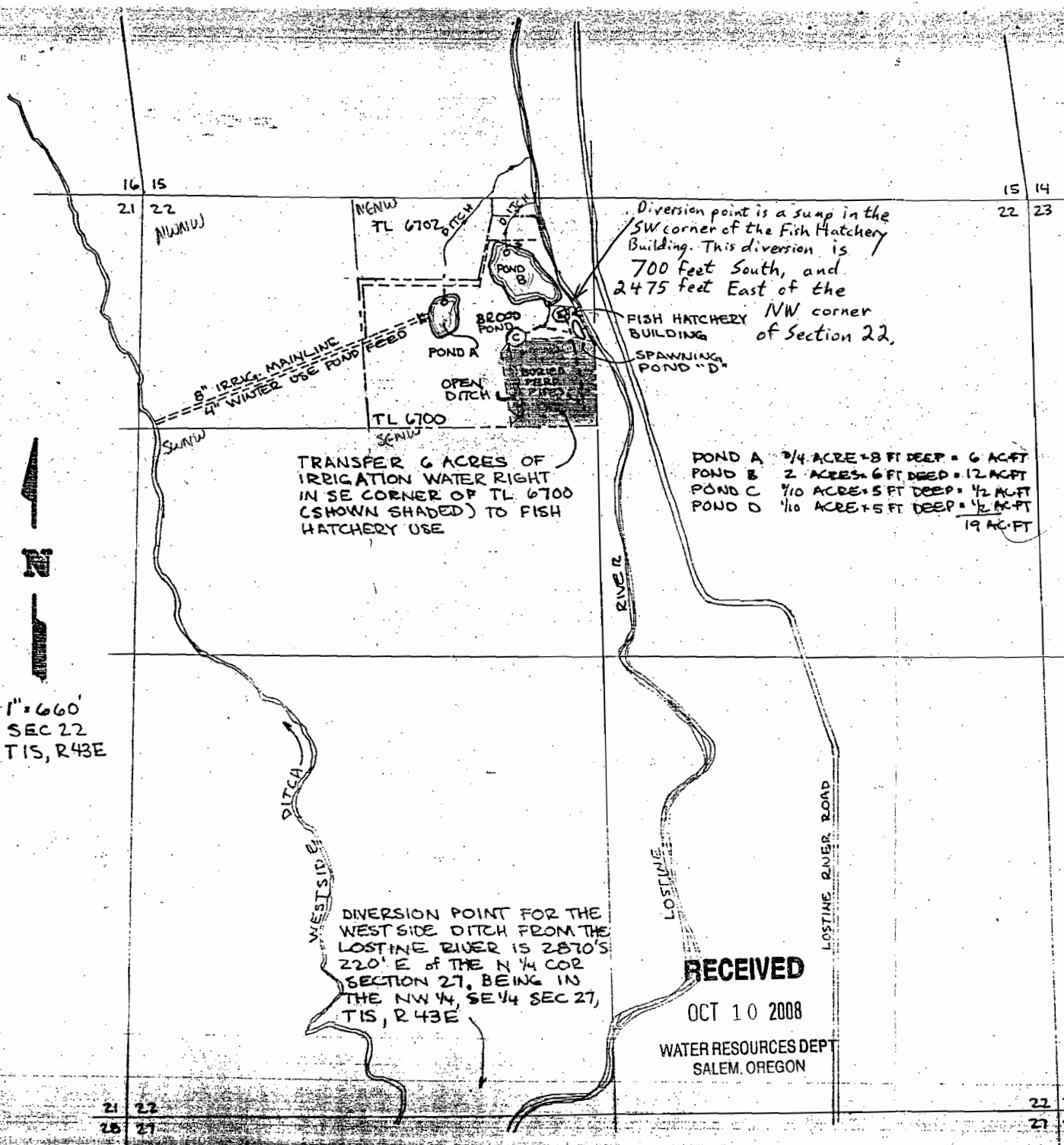
DURING THE NON IRRIGATION SEASON, NEW WATER RIGHTS FROM THE ABOVE SOURCES ARE APPLIED FOR.



RECEIVED

OCT 10 2008

WATER RESOURCES DEPT.
SALEM, OREGON



Diversion point is a sump in the SW corner of the Fish Hatchery Building. This diversion is 700 feet South, and 2475 feet East of the NW corner of Section 22.

TRANSFER 6 ACRES OF IRRIGATION WATER RIGHT IN SE CORNER OF TL 6700 (SHOWN SHADED) TO FISH HATCHERY USE

- POND A 3/4 ACRE x 8 FT DEEP = 6 AC-FT
 - POND B 2 ACRES x 6 FT DEEP = 12 AC-FT
 - POND C 1/10 ACRE x 5 FT DEEP = 1/2 AC-FT
 - POND D 1/10 ACRE x 5 FT DEEP = 1/2 AC-FT
- 19 AC-FT

DIVERSION POINT FOR THE WESTSIDE DITCH FROM THE LOSTINE RIVER IS 2870'S 220' E OF THE N 1/4 COR SECTION 27, BEING IN THE NW 1/4, SE 1/4 SEC 27, T1S, R43E

1" = 660'
SEC 22
T1S, R43E

IN SECTION 22
T1S R43E WM
WALLOWA COUNTY

HATCHERY WATER RIGHT
APPLICATION MAP
FOR JOYCE WYNAN
LOSTINE, OREGON

DEC. 1992