

IMPORTANT  
This Map for Assessment  
and Taxation Purposes  
ONLY

SEC. 6 T8S R5W WM  
POLK COUNTY

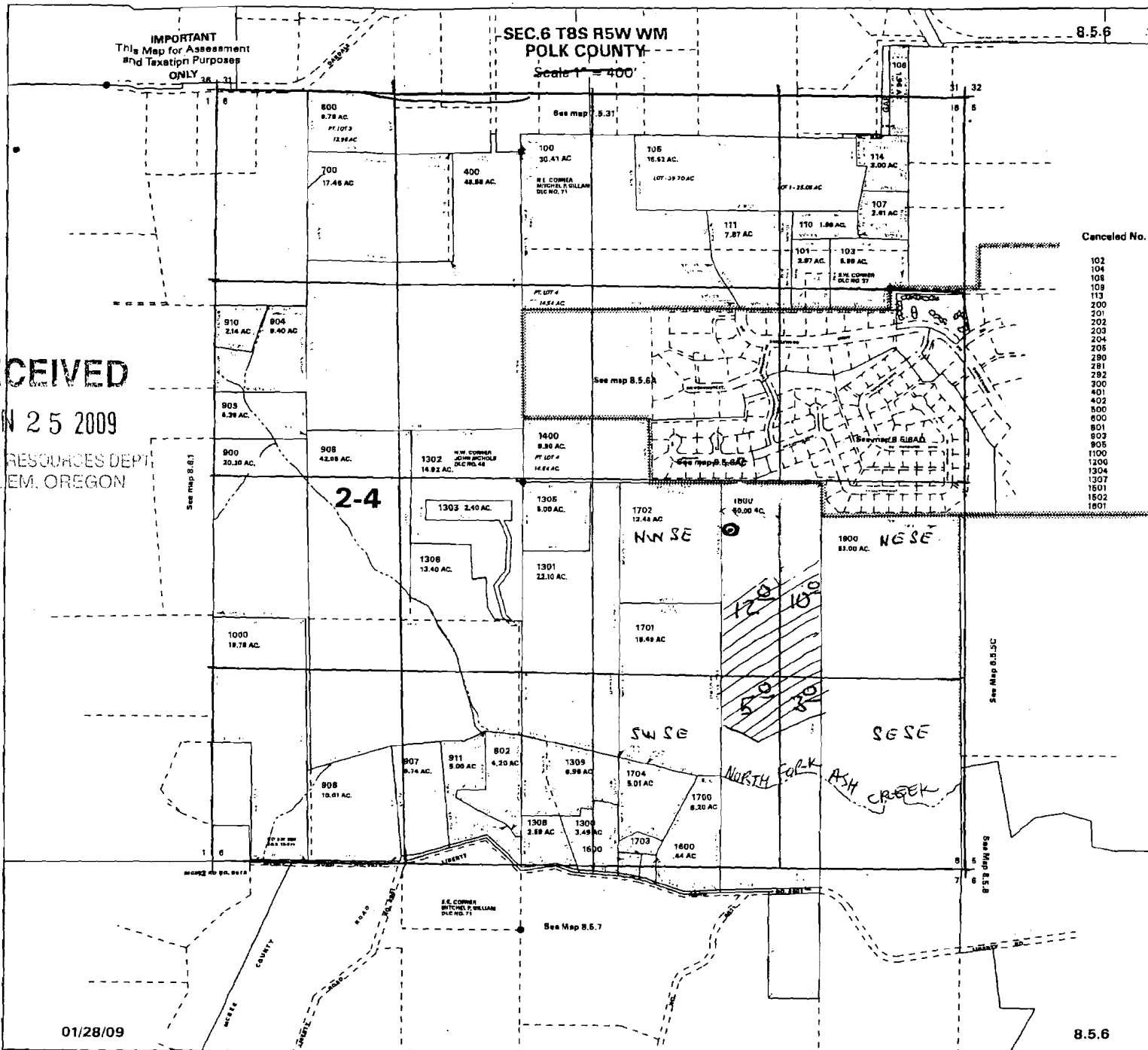
Scale 1" = 400'

8.5.6

RECEIVED

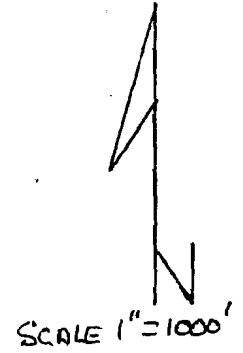
JUN 25 2009

WATER RESOURCES DEPT  
SALEM, OREGON



Canceled No.

- 102
- 104
- 108
- 109
- 113
- 200
- 201
- 202
- 203
- 204
- 205
- 280
- 281
- 282
- 300
- 401
- 402
- 600
- 601
- 603
- 905
- 1100
- 1200
- 1304
- 1307
- 1501
- 1502
- 1601



**UPDATED**  
 PROPOSED WELL  
 LOCATED  
 2310' NORTH  
 1640' WEST  
 FROM SE CORNER  
 SECTION 6.

RECEIVED

NOV 18 2009

WATER RESOURCES DEPT  
SALEM, OREGON

01/28/09

8.5.6

6-17289

BC