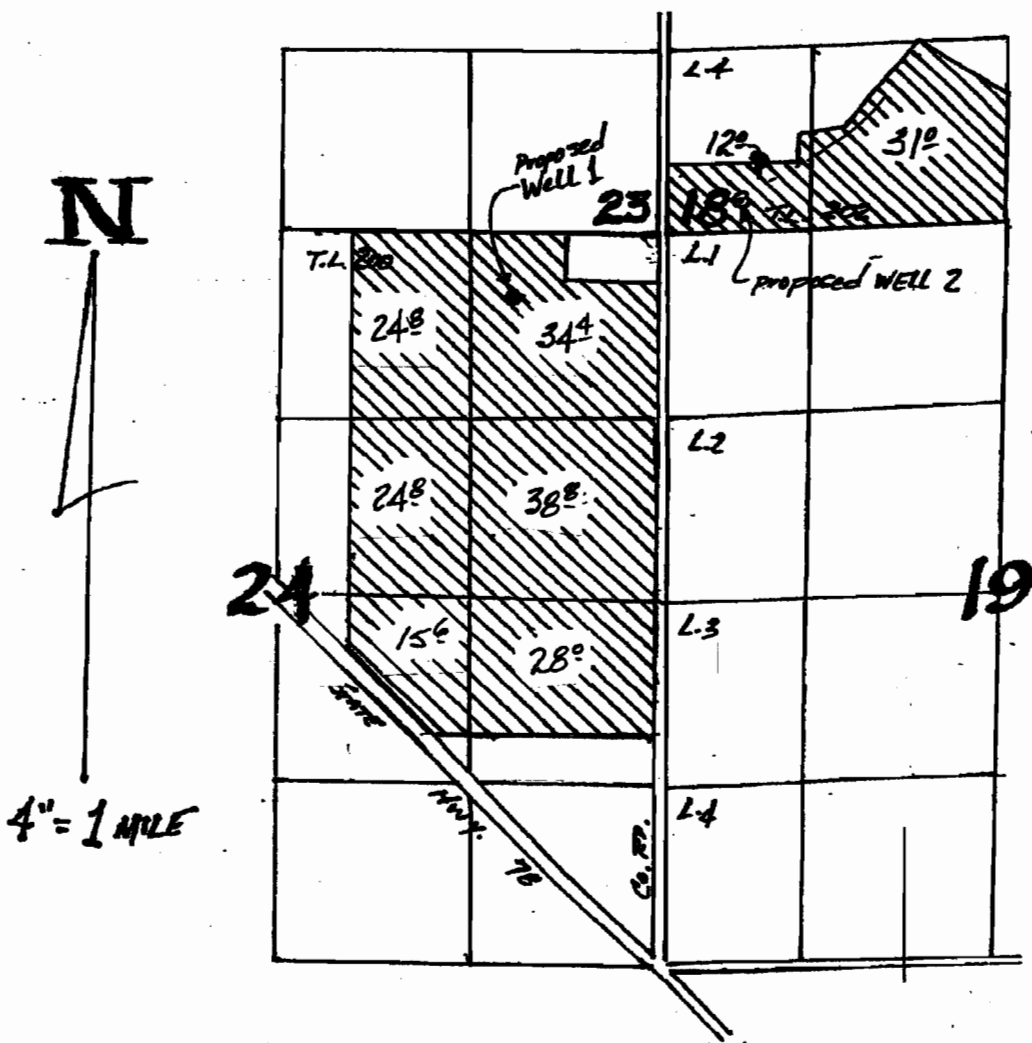


AMENDED JULY 6, 2009
**APPLICATION MAP for
 STEVE RICKMAN**

T. 23 S., R. 31 & 32 E., W.M.



RECEIVED

JAN 28 2008
 WATER RESOURCES DEPT
 SALEM, OREGON

WELLS LOCATED: #1-460' S. & 1120' W.; #2-280' N. & 520' E.;
 both from NE Cor. Sec. 24.

RECEIVED

JUL 29 2009

WATER RESOURCES DEPT
 SALEM, OREGON