

SECTION PLAT

Section 29

Township 24-5

Range 32 1/2 - E

County of Harney

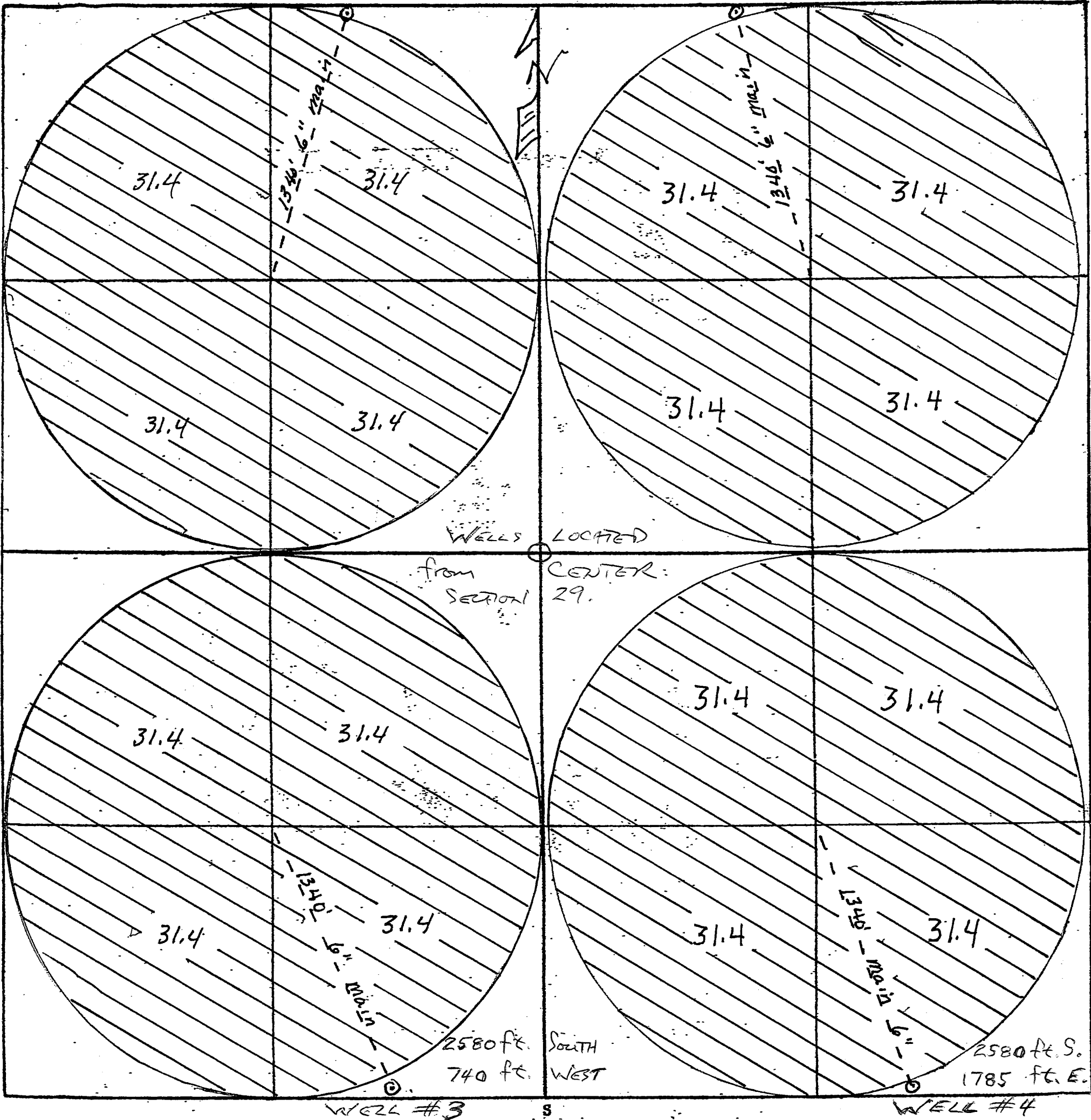
State of Oregon

REVISED CORRECTED
APPROX SCALE
1" = 500 FT.

2610 ft NORTH
925 ft WEST

WELL #1

NORTH 960 ft. E. WELL #2



WELLS LOCATED
FROM SECTION 29
CENTER

2580 ft. SOUTH
740 ft. WEST

2580 ft. S.
1785 ft. E.

WELL #3

WELL #4