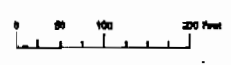


MAP PREPARED FOR
JOINT PURPOSE ONLY



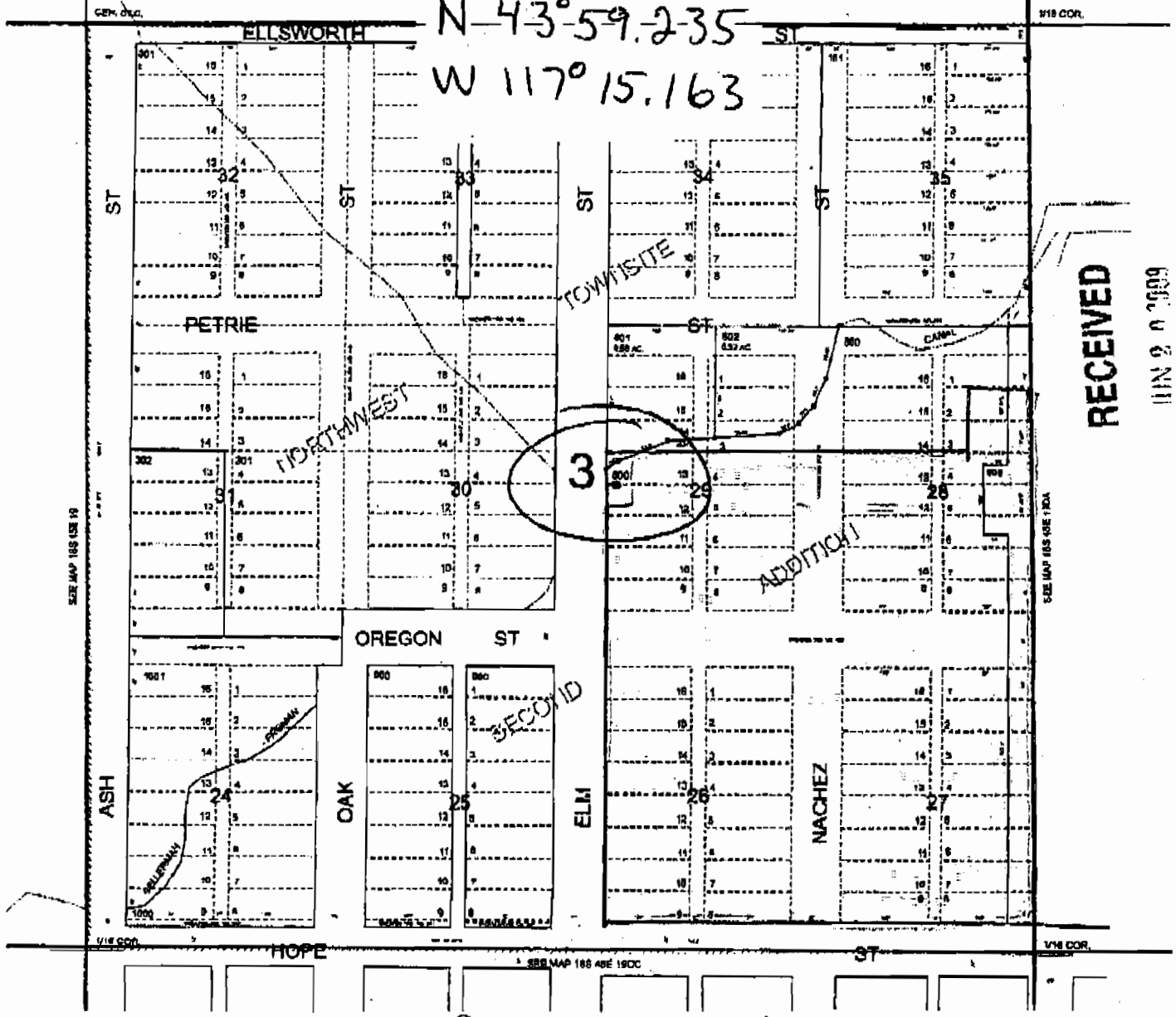
NW1/4 SE1/4 SECTION 19 T.18S. R.15E. W.M.
MALHEUR COUNTY

REVISED ADJUSTED
CORRECTED SCALE
1" = 200 FT.

Well

(48) 6-24-09

N 43° 59.235
W 117° 15.163



WELL LOCATED FROM CENTER OF SECTION 19
745 FE EAST
655 FE SOUTH