

THIS MAP WAS PREPARED FOR ASSESSMENT PURPOSE ONLY

NW1/4 NE1/4 SECTION 19 T.09S. R.40E. W.M. BAKER COUNTY

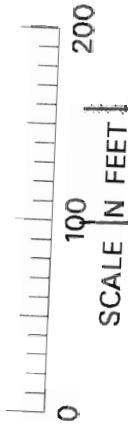
Gr-17251

1" = 100'



SEE MAP 09S 40E 18

09S 40E



1/4 COR.

1/16 COR.

CAN 300 400

ALPINE

LANE

100
4.54 AC.

7

101
4.54 AC.

8

102
4.54 AC.

9

103
4.54 AC.

10

ALPINE

ESTATES

5-32

PHASE 2

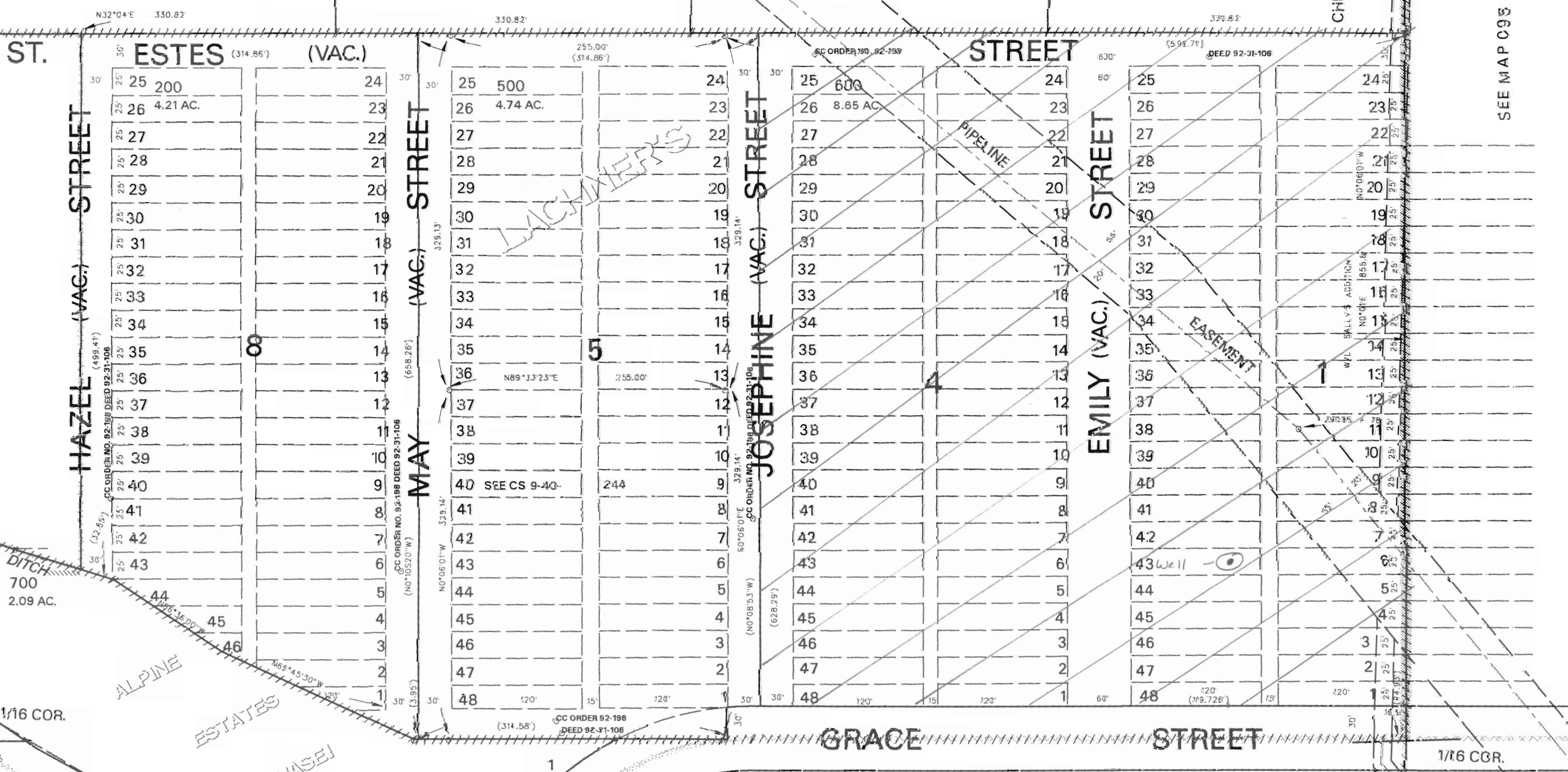
NORTHWEST

GAS

CHEVRON OIL PIPELINE EASE.
(SALT LAKE LINE)

SEE MAP 09S 40E 19BA

SEE MAP 09S 40E 19AA



SEE MAP 09S 40E 19B

Well #1 (BAKE 50139) located:
1190' S & 1155' E fr. N 1/4 corner Sect. 19

SEE MAP 09S 40E 19AC

RECEIVED

AUG 05 2009

WATER RESOURCES DEPT
SALEM, OREGON

PRINTED
01/25/09

09S 40E 19