

672719

TL 1501 4.55
TL 1502 4.55
CANAL EASE. 1.56
HOMESITE (1.40)

9.26 ACRES

(340' x 180')

WELL LOCATED FROM
SE CORNER
SECTION 15
150 FT WEST
40 FT NORTH

N ↑

AREA TO BE
IRRIGATED
MARKED ///

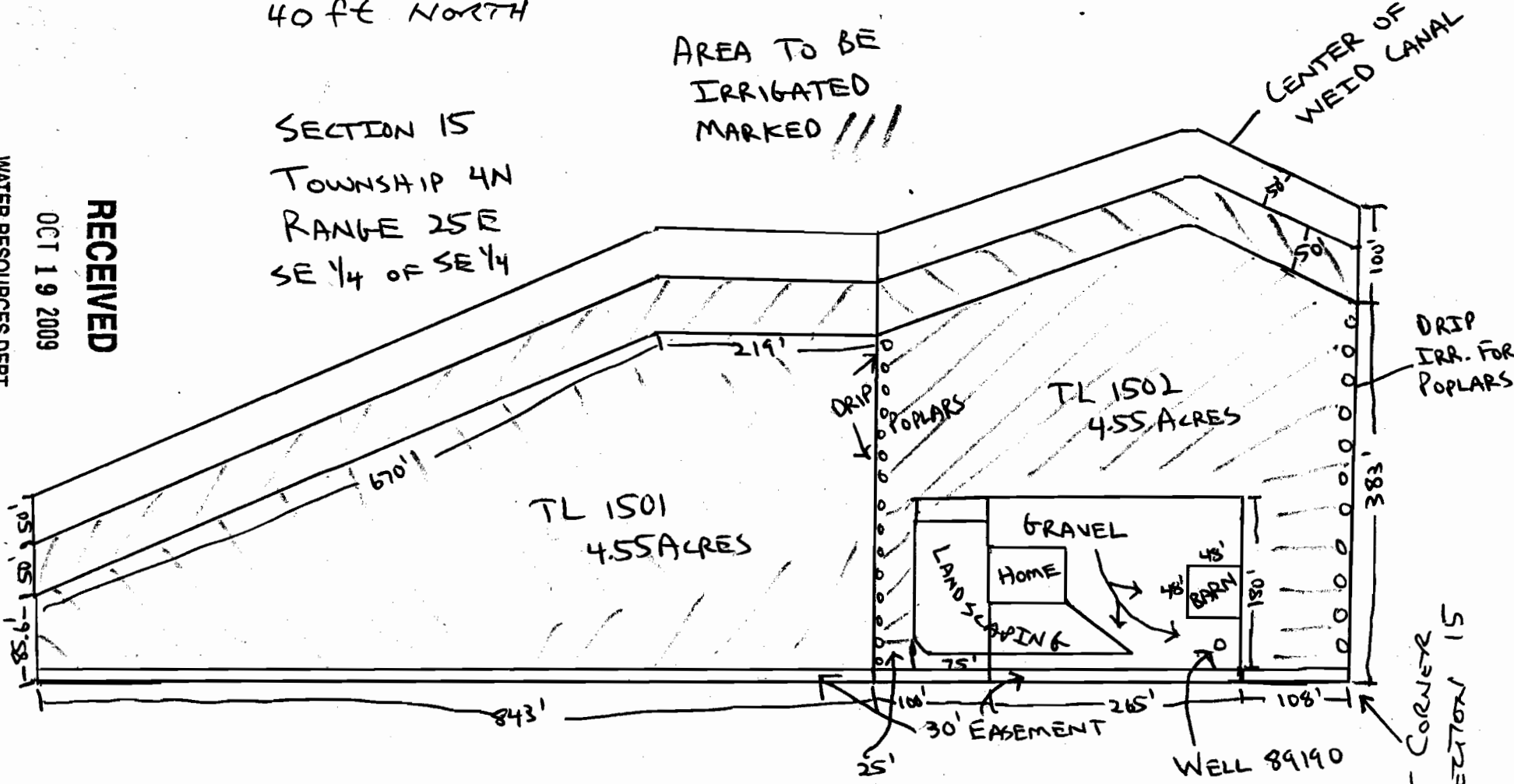
CENTER OF
WEED CANAL

SECTION 15
TOWNSHIP 4N
RANGE 25E
SE 1/4 OF SE 1/4

RECEIVED

OCT 19 2009

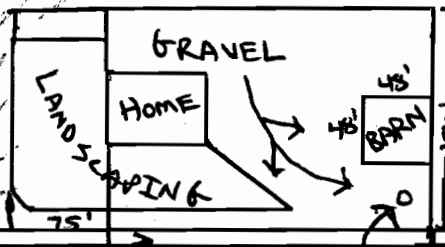
WATER RESOURCES DEPT
SALEM, OREGON



DRIIP
IRR. FOR
POPLARS

TL 1502
4.55 ACRES

TL 1501
4.55 ACRES



SE CORNER
SECTION 15

1" = 150'