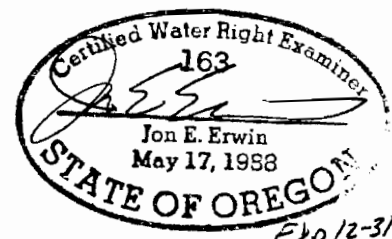
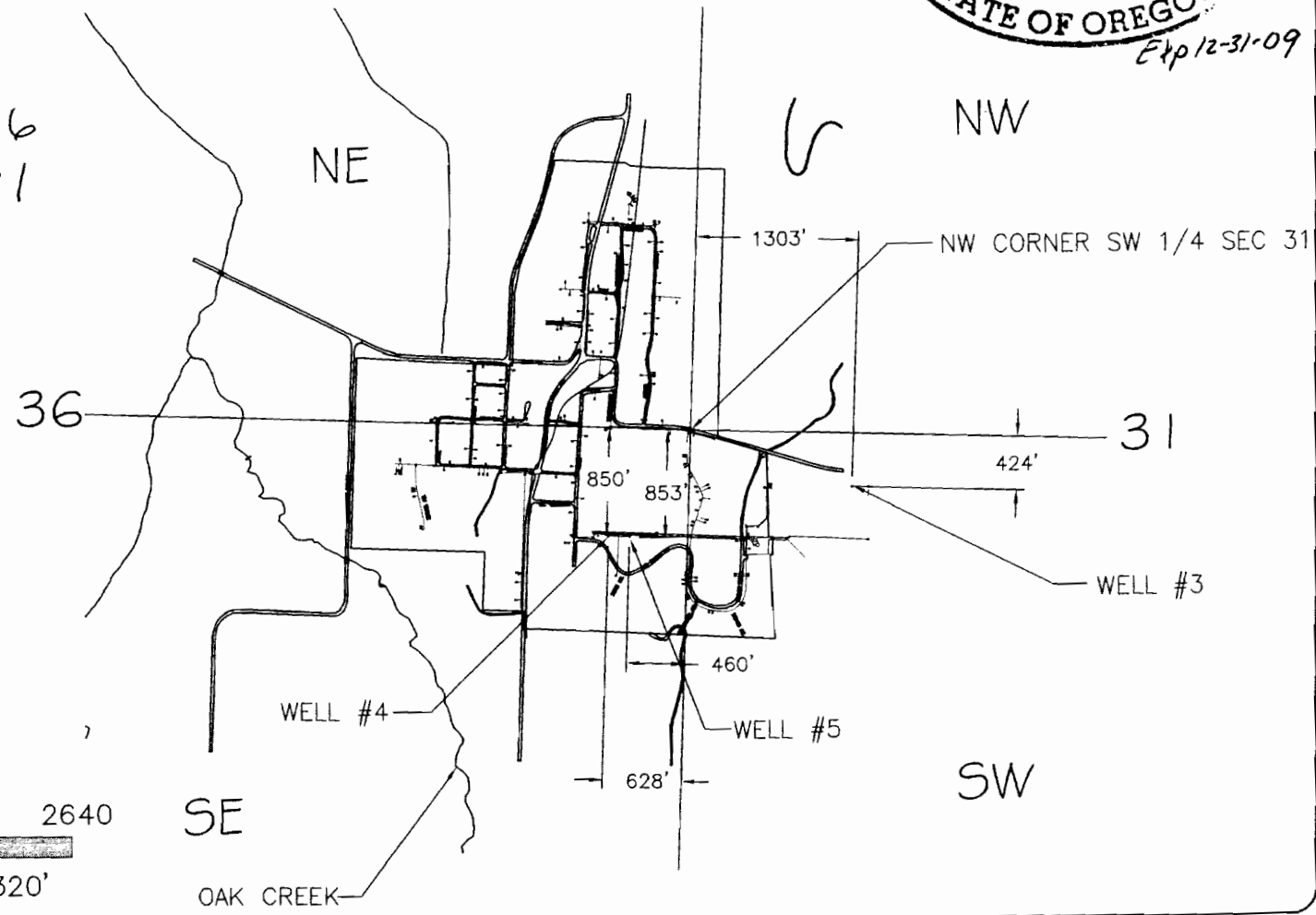


2221-5

CITY OF  
SODAVILLE, OREGON  
MARCH 2009  
APPLICATION MAP  
T12S, R1W, SECTIONS 31 & 36



125/2w-36  
125/1w-31



RECEIVED

MAY 29 2009



0 1320 2640



SCALE: 1" = 1320'

WATER RESOURCES DEPT  
SALEM, OREGON

1	REVISION
2	
3	
4	
5	
6	
7	

ERWIN CONSULTING ENGINEERING  
JON ERWIN, P.E.  
Consultant - Civil Engineer  
(541) 295-2190  
39923 Bond Rd.  
LEBANON, OREGON 97355

CITY OF SODAVILLE, OREGON  
APPLICATION MAP

Date: MAR 09  
Scale:  
Drawn: M. McColl  
Job: P-  
Sheet:  
of Sheets