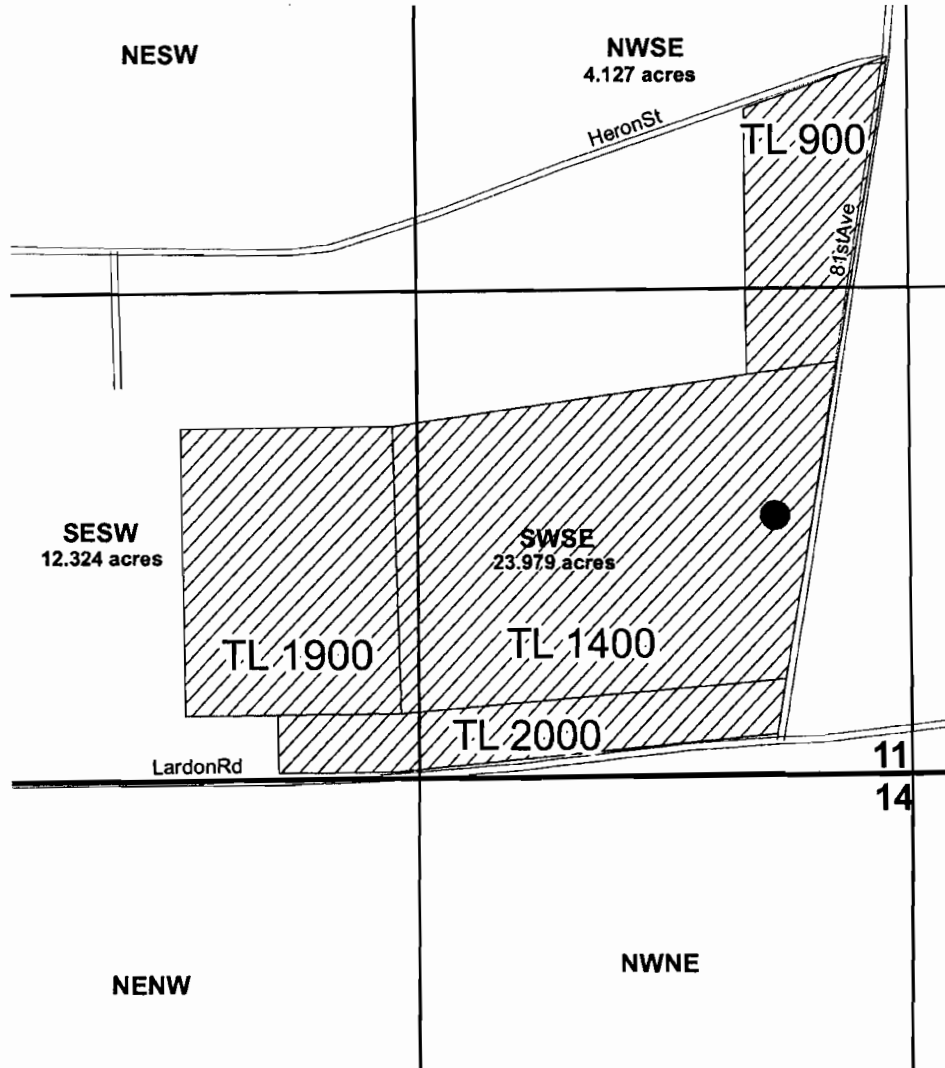


**T. 7 S., R. 2 W., W.M.
Section 11 SWSE
Marion County
Willamette Basin**

RECEIVED

MAR 03 2010

WATER RESOURCES DEPT
SALEM, OREGON

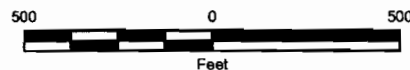


Legend

- Proposed Well
- Streets
- Section
- Quarter Quarter
- ▨ Place of Use

Reference Location:

- 1) Proposed well location is 395 feet West and 695 feet North of the SE Corner, SWSE, Section 11, T7S, R2W, W.M.



Notes:

1. The locations of all features shown are approximate.
2. This drawing is for information purposes. It is intended to assist in showing features discussed in an attached document. GeoEngineers, Inc. can not guarantee the accuracy and content of electronic files. The master file is stored by GeoEngineers, Inc. and will serve as the official record of this communication.
3. It is unlawful to copy or reproduce all or any part thereof, whether for personal use or resale, without permission.

Groundwater Permit Application Map

**Dawson-Reslock Property
Salem, Oregon**

GEOENGINEERS

Figure 1

App G-17290