

Attachment A - Groundwater Application Map

G-17238



Well Location

Acres

Key

SW 1/4 NW 1/4 Sec. 31
T. 5N., R. 29E., W.M.;
520' N. & 440' E. from the
W 1/4 corner, Sec. 31
Umatilla Co. Basin 7

3.0 SWNW TL 1200

POA = (well #1)

POU =

NW 1/4 SEC 31 T5N R29E WM

92806

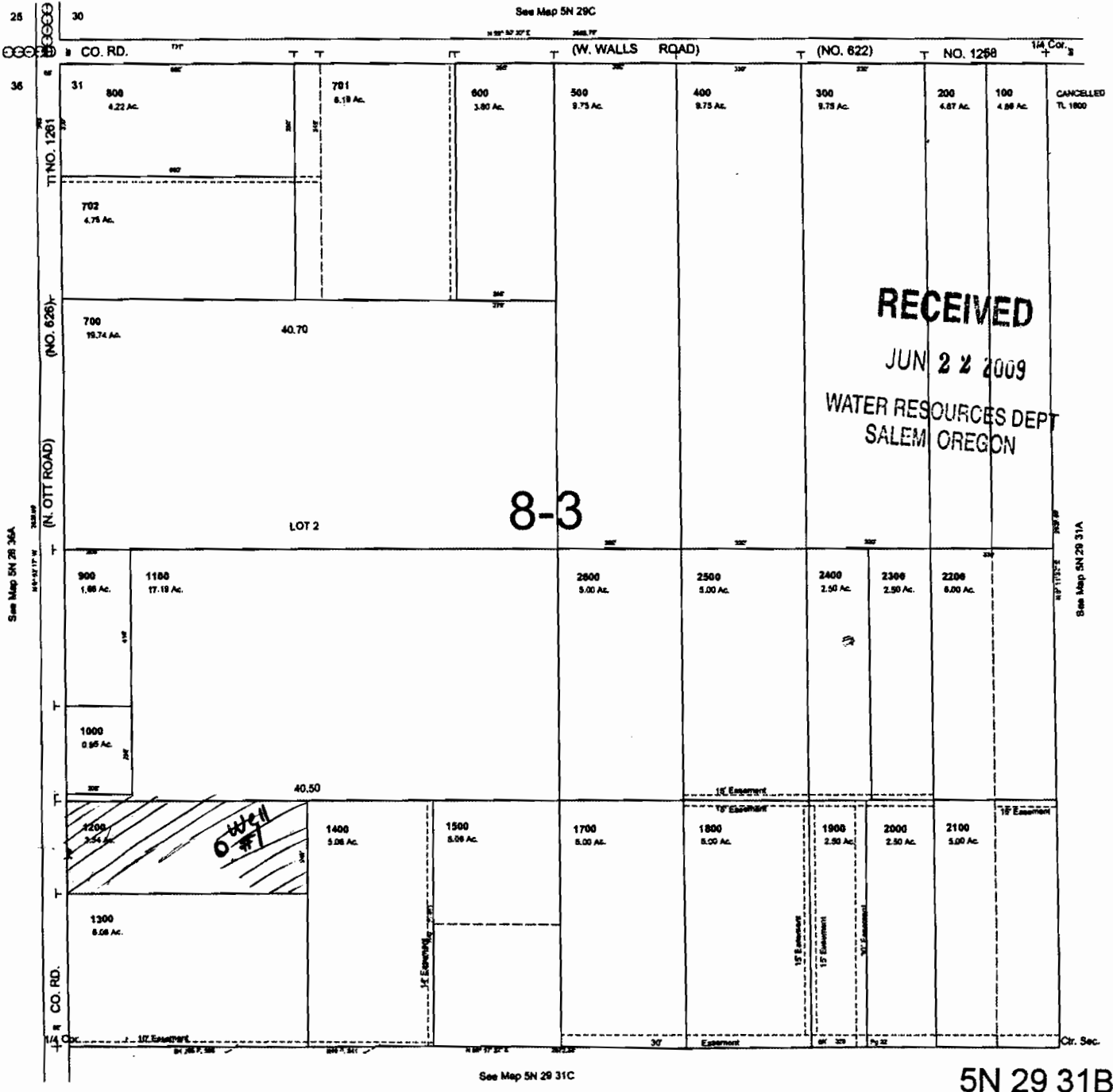
5N 29 31B

UMATILLA COUNTY

AERIAL PHOTO NO. 1P-101

~~SCALE 1"=200'~~

Scale: 1" = 400'



5N 29 31B